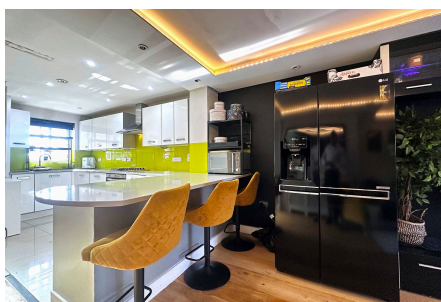
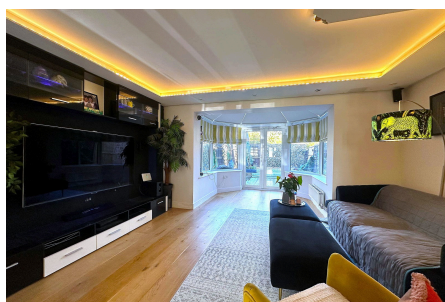




Fremantle Way, Hayes, UB3 2FX

Offers In Region Of £529,950

🛏 3 🚿 2 🛋 1



LOCATION!! STUNNING FAMILY HOME!! Shaws of London bring to market a wonderful three bedroom family home situated in the fantastic Holmesgate Place development. Property come with a large open plan kitchen/reception room, three double bedrooms, two bathrooms and a further ground floor w/c. Further benefiting from a private rear garden, parking on front driveway and visitor bays. Property is situated in a wonderful tranquil location and placed in an excellent catchment for schools, walking distance to Uxbridge Road, Hayes Town and all shops/amenities. Fantastic bus links to Heathrow Airport, Stockley Business Park & Uxbridge Town Centre. Not to be missed! Call our sales team to view!

910 Uxbridge Road, Hayes
Middlesex UB4 0RW

info@shawsoflondon.co.uk
www.shawsoflondon.co.uk

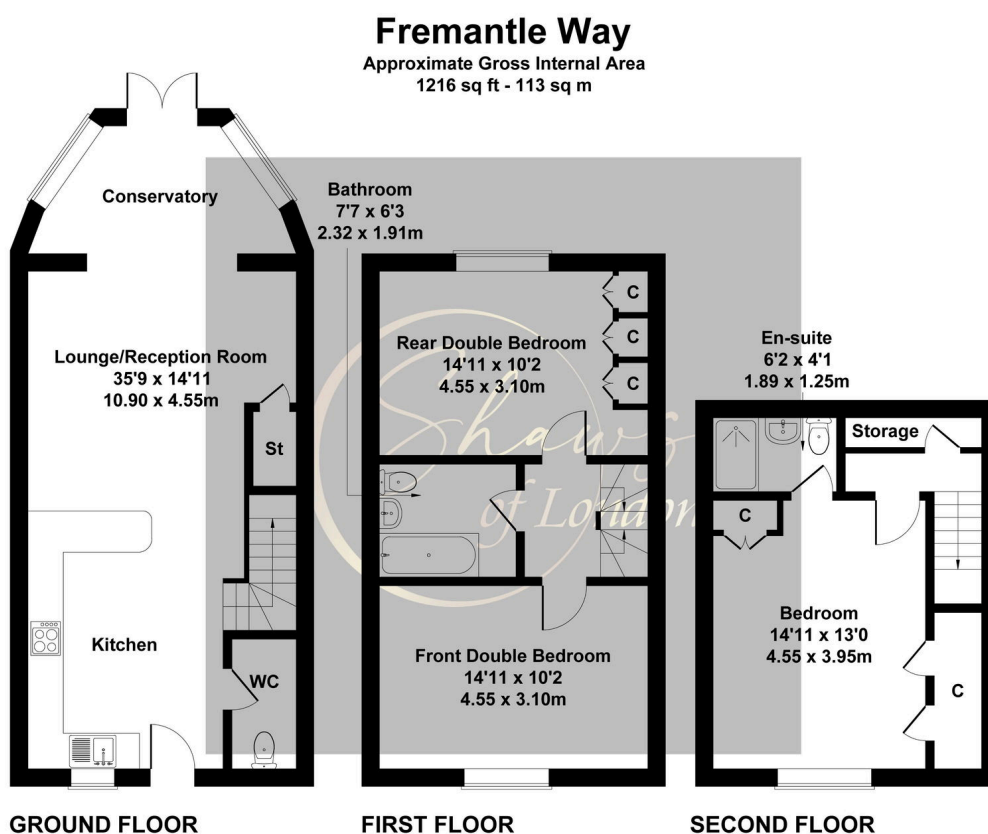
020 8561 6888

📷 @shawsoflondon

"Shaws of London" is the trading name of Shaw & Co Estates (UK) Ltd

Key Features

- Stunning Three Bedroom Town House
- Holmesgate Place Development
- Parking Available + Visitor Bays
- Brilliant Bus Links To Hayes & Harlington Station
- Fantastic Location
- Two Family Bathrooms + Ground Floor w/ C
- Modern Decour
- Excellent Catchment For Schools




Not to Scale. Produced by The Plan Portal 2024
For Illustrative Purposes Only.

910 Uxbridge Road, Hayes
Middlesex UB4 0RW

info@shawsoflondon.co.uk
www.shawsoflondon.co.uk

020 8561 6888

 @shawsoflondon