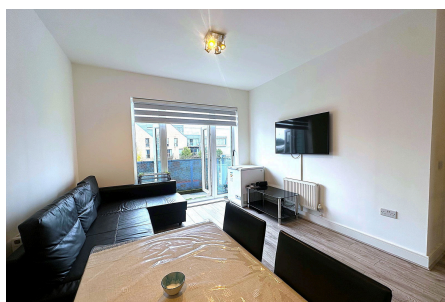




Wraysbury Drive, Yiewsley, West Drayton, UB7 7FS

Guide Price £319,950

2 2 1



CHAIN FREE!! STUNNING APARTMENT!! Shaws Of London bring to market a wonderful second floor two bedroom apartment minutes from West Drayton high street & Elizabeth Station. Located by the Marina and comes with allocated parking this apartment is ideal for a first time buyer or investment. Comprising two large double bedrooms, two newly fitted bathroom suites, spacious open plan kitchen/reception room, intercom system for added security and a walk out balcony with stunning views. Excellent Bus/Train links to Uxbridge, Heathrow Airport & Stockley Business Park & Central London. Not to be missed, call our sales team to view!

910 Uxbridge Road, Hayes
Middlesex UB4 0RW

info@shawsoflondon.co.uk
www.shawsoflondon.co.uk

020 8561 6888

@shawsoflondon

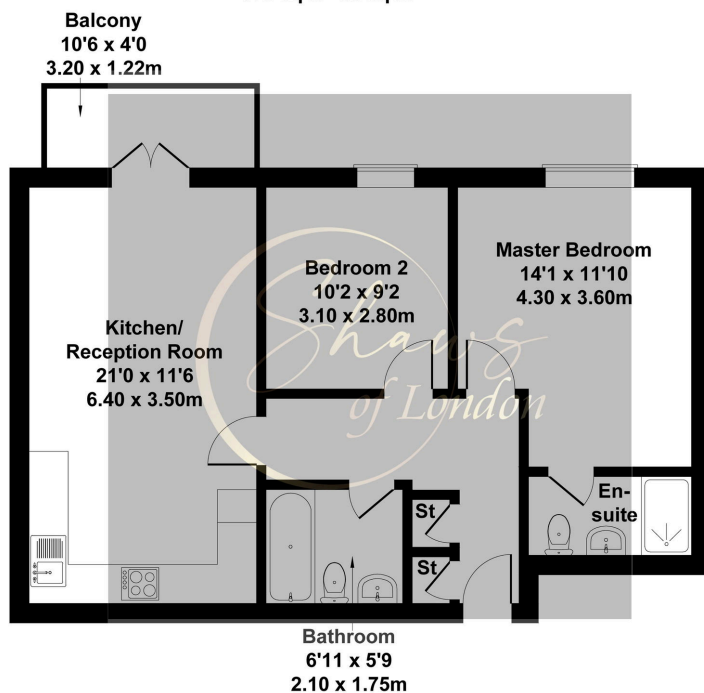
"Shaws of London" is the trading name of Shaw & Co Estates (UK) Ltd

Key Features

- Stunning Spacious Two Bedroom Apartment
- Reasonable Service Charge & Ground Rent Costs
- Two Newly Fitted Bathroom Suites
- Beautiful Condition Throughout
- Walking Distance To West Drayton Station (Elizabeth Line)
- Lease Over 130 years
- Chain Free
- Walkout Balcony
- Ideal First Time Purchase Or Investment

Little Grebe House

Approximate Gross Internal Area
678 sq ft - 63 sq m




Not to Scale. Produced by The Plan Portal 2024
For Illustrative Purposes Only.

910 Uxbridge Road, Hayes
Middlesex UB4 0RW

info@shawsoflondon.co.uk
www.shawsoflondon.co.uk

020 8561 6888

 @shawsoflondon