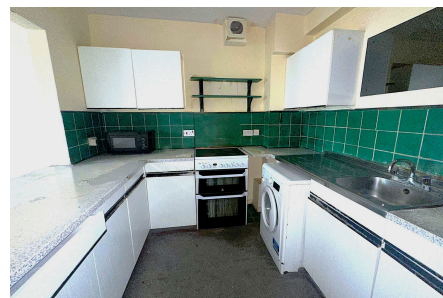


Oak Tree Court, 523 Yeading Lane, Northolt, Middlesex, UB5 6LX

Offers In Region Of £245,000

🛏️ 2 🚿 1 🚗 1




LOCATION!! Shaws Of London bring to market a chain free second floor two bedroom apartment on Yeading Lane, Oak Tree Court. Property comes with a spacious living area, good size kitchen, two very spacious bedrooms, and a good size family bathroom. Ideal for investment or as a first time buyer as property is a good size and comes on street parking, stone throw away from all local shops/amenities and good bus links to Heathrow Airport, Northolt Station & Greenford Station. Not to be missed, call our sales team to view immediately!

910 Uxbridge Road, Hayes
Middlesex UB4 0RW

info@shawsoflondon.co.uk
www.shawsoflondon.co.uk

020 8561 6888

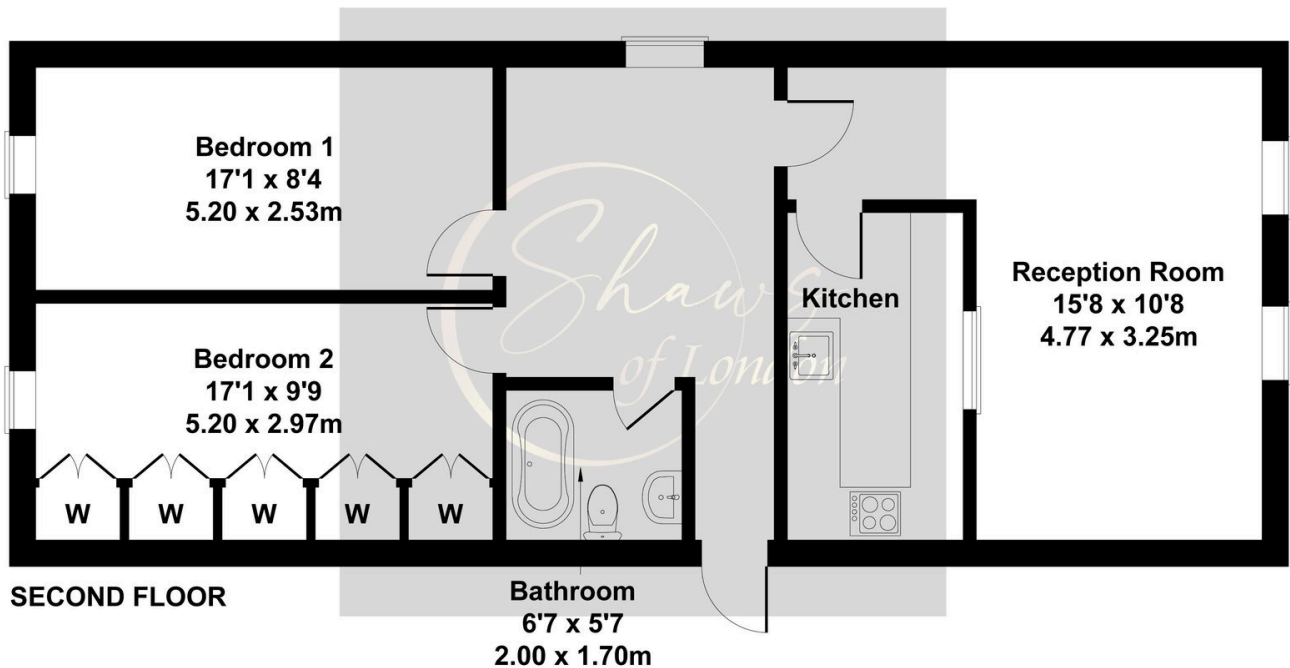
 @shawsoflondon

Key Features

- Excellent Location
- Chain Free
- Low Costs
- Ideal Investment Or First Time Purchase
- Two Bedroom Second Floor Apartment
- Lease Over 140 Years
- Good Bus Links To Heathrow Airport, Northolt Station & Greenford Station

Oaktree Court

Approximate Gross Internal Area
807 sq ft - 75 sq m



Not to Scale. Produced by The Plan Portal 2024
For Illustrative Purposes Only.