

Woodrow Avenue, Hayes, UB4 8QP

Guide Price £419,950 (Sold STC)

🛏 2 🚿 1 🚗 1



910 Uxbridge Road, Hayes
Middlesex UB4 0RW

info@shawsoflondon.co.uk
www.shawsoflondon.co.uk

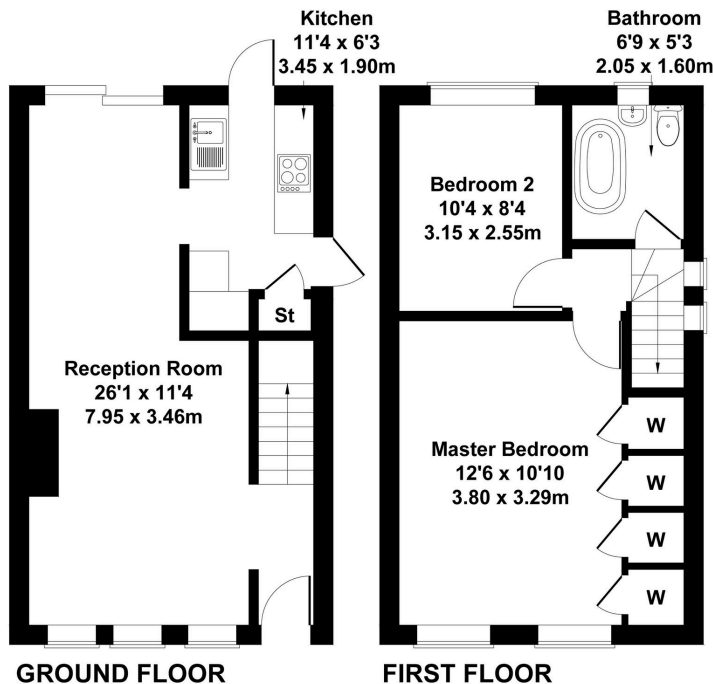
020 8561 6888

📷 @shawsoflondon

- Two Bedroom End Terraced Family Home
- Large Garden 80 Foot Long
- Parking For Two Cars
- Two Spacious Bedrooms
- Ideal For First Time Buyer As £0 Stamp Duty Applies
- Modernisation Required
- Good Catchment For Schools
- Brilliant Bus Links
- Potential For Rear/Loft Extension STPP
- Fantastic Location

Woodrow Avenue

Approximate Gross Internal Area
743 sq ft - 69 sq m




Not to Scale. Produced by The Plan Portal 2024
For Illustrative Purposes Only.

EXCELLENT LOCATION!! Shaws Of London bring to market a wonderful two bedroom end-terraced family home situated in North Hayes UB4. Property comes with large through lounge sitting room, kitchen, two spacious bedrooms and a family bathroom suite. Further benefiting from parking for 2 cars, large 80 foot garden, side access and ample potential for rear extension and loft extension STPP. Property is an ideal first time purchase or investment.

910 Uxbridge Road, Hayes
Middlesex UB4 0RW

info@shawsoflondon.co.uk
www.shawsoflondon.co.uk

020 8561 6888

 @shawsoflondon