

Woodrow Avenue, Hayes, UB4 8QP

Guide Price £419,950

🛏 2 🚿 1 🚗 1

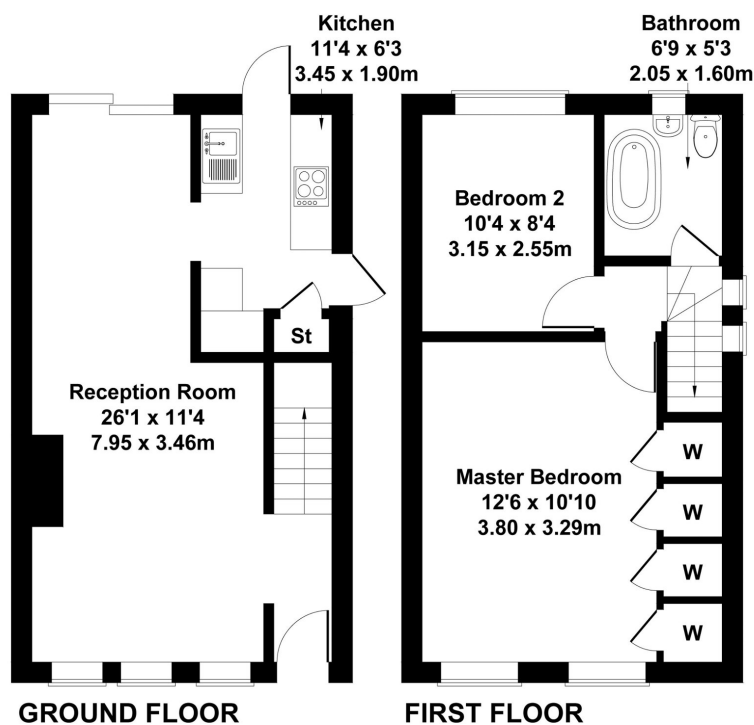


EXCELLENT LOCATION!! Shaw & Co Estates Hayes bring to market a wonderful two bedroom end-terraced family home situated in North Hayes UB4. Property comes with large through lounge sitting room, kitchen, two spacious bedrooms and a family bathroom suite. Further benefiting from parking for 2 cars, large 80 foot garden, side access and ample potential for rear extension and loft extension STPP. Brilliant bus links, good catchment for schools and shops/ amenities on your doorstep. Property is an ideal first time purchase or investment. Not to be missed! Call our sales team to view!

- Two Bedroom End Terraced Family Home
- Large Garden 80 Foot Long
- Parking For Two Cars
- Two Spacious Bedrooms
- Ideal For First Time Buyer As £0 Stamp Duty Applies
- Modernisation Required
- Good Catchment For Schools
- Brilliant Bus Links
- Potential For Rear/Loft Extension STPP
- Fantastic Location

Woodrow Avenue

Approximate Gross Internal Area
743 sq ft - 69 sq m



GROUND FLOOR

FIRST FLOOR

Not to Scale. Produced by The Plan Portal 2024
For Illustrative Purposes Only.