



2 Floors



4 Bedrooms



Utility



1 En suite



Garage



Study

## HARWOOD FOUR BEDROOM HOME

A four bedroom detached home comprising a spacious lounge and impressive kitchen / dining / family area with a bay window, both feature beautiful French doors opening onto the rear garden. Downstairs also includes a convenient utility cupboard, study and cloakroom.

Upstairs is home to the family bathroom with separate bath and shower cubicle, plus four double bedrooms. The master bedroom benefits from fitted wardrobes and an en suite shower room.

# HARWOOD

## FOUR BEDROOM HOME

### ⬢ DIMENSIONS

#### First Floor:

##### Bedroom 1

3.73m x 3.01m  
12'3" x 9'10"

##### En Suite

##### Bedroom 2

3.55m x 3.66m  
11'8" x 12'0"

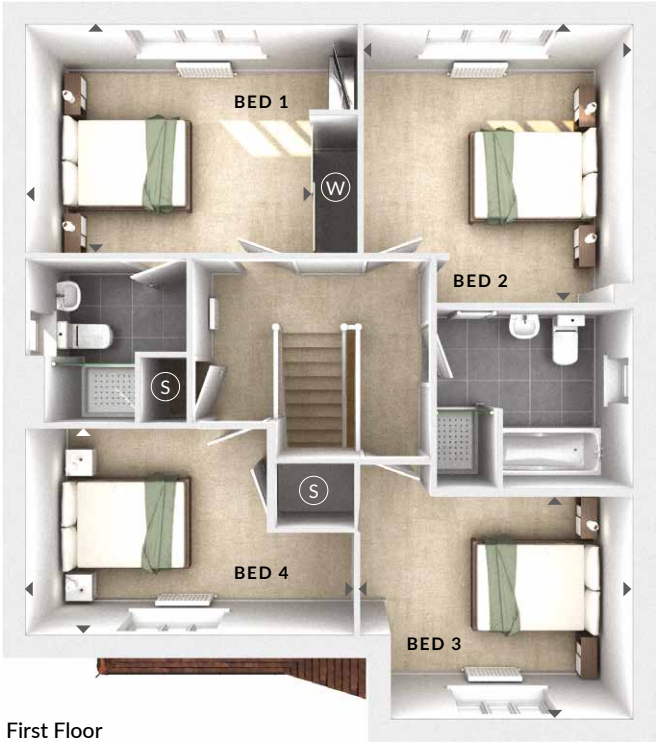
##### Bedroom 3

3.56m x 2.93m  
11'8" x 9'7"

##### Bedroom 4

4.36m x 2.72m  
14'4" x 8'11"

##### Bathroom



First Floor

#### Ground Floor:

##### Lounge

3.59m x 4.79m  
11'9" x 15'8"

##### Kitchen / Dining / Family

4.26m x 8.08m  
14'0" x 26'5"

##### Study

3.16m x 2.23m  
10'4" x 7'4"

(W) Wardrobes

(U) Utility

(S) Storage

(C) Cloaks

◀▶ Measurement Points

△ External Access



Ground Floor