



2 Floors



4 Bedrooms



2 En suites



Home Office

PEELE FOUR BEDROOM HOME

A four bedroom detached home featuring a generously sized lounge, study, an outstanding open plan kitchen / dining / family area with a utility cupboard and French doors opening onto the rear garden. Upstairs is home to four double bedrooms, two with an en suite shower room and the master bedroom complete with fitted wardrobes.

PEELE FOUR BEDROOM HOME

◇ DIMENSIONS

First Floor:

Bedroom 1

2.77m x 3.81m
9'1" x 12'6"

En Suite

Bedroom 2

2.85m x 4.56m
9'4" x 14'11"

En Suite

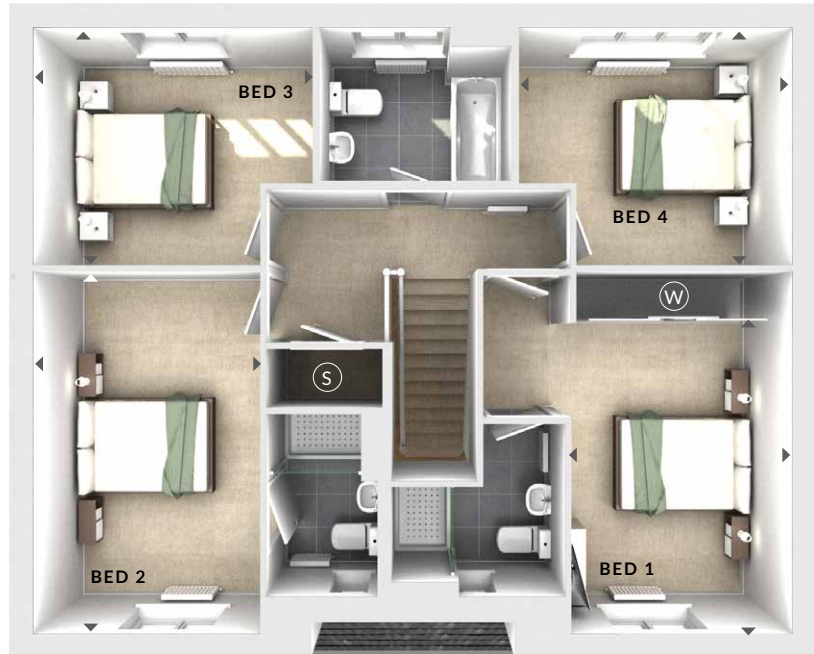
Bedroom 3

3.50m x 2.98m
11'6" x 9'9"

Bedroom 4

3.42m x 3.08m
11'3" x 10'1"

Bathroom



First Floor

Ground Floor:

Lounge

3.81m x 5.24m
12'6" x 17'2"

Kitchen / Dining / Family

5.59m x 7.62m
18'4" x 25'0"

Home Office

2.71m x 2.30m
8'11" x 7'7"

(S) Storage

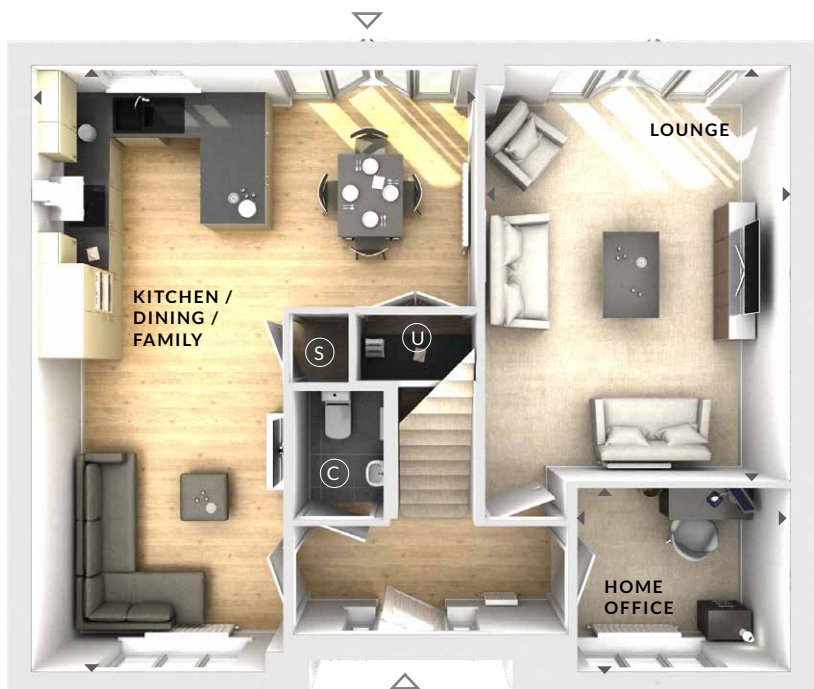
(C) Cloaks

(W) Wardrobes

(U) Utility

◀▶ Measurement Points

△ External Access



Ground Floor

© Bloor Homes 482 B 4.9

These particulars are intended as a preliminary guide for prospective purchasers and should not be relied upon. The elevational treatment for individual house types shows a typical arrangement. Details of materials and design treatments may vary. Any artist impressions shown are not intended to represent any particular plot. Purchasers are advised to inspect the layout plan to establish the arrangement of the house and surrounding property. Internal layouts show a general arrangement which may vary from plot to plot. Room sizes given are approx. overall finished room sizes and subject to normal building tolerances (ie ± 75mm). In all instances purchasers are advised to inspect plot specific information available from our sales team. Nothing in these particulars or verbal assurance shall form or constitute part of any contract, and are given without any responsibility on behalf of Bloor Homes.

BLOOR HOMES