



## HILLSIDE GARDENS

EDGWARE, HA8 8HA

**£810,000**  
**FREEHOLD**

Taylor Hawkins proudly presents this 4 bedroom semi detached house with a garage, located in the highly sought after Hillside Gardens. The property offers generous living space, including a convenient downstairs toilet. The large garden provides ample outdoor space, with further potential for extension and a loft conversion (subject to planning permission).

Upstairs, the bedrooms are spacious, complemented by two bathrooms and a well sized landing area. Situated on a quiet and charming road, the property is within easy reach of local shops, amenities, and excellent transport links.

Don't miss out—call today to arrange a viewing!



**TAYLOR HAWKINS**  
Estate Agents  
0208 958 2222 / TaylorHawkins.co.uk

## Hillside Gardens, Edgware, HA8

Approximate Area = 1488 sq ft / 138.2 sq m

Limited Use Area(s) = 8 sq ft / 0.7 sq m

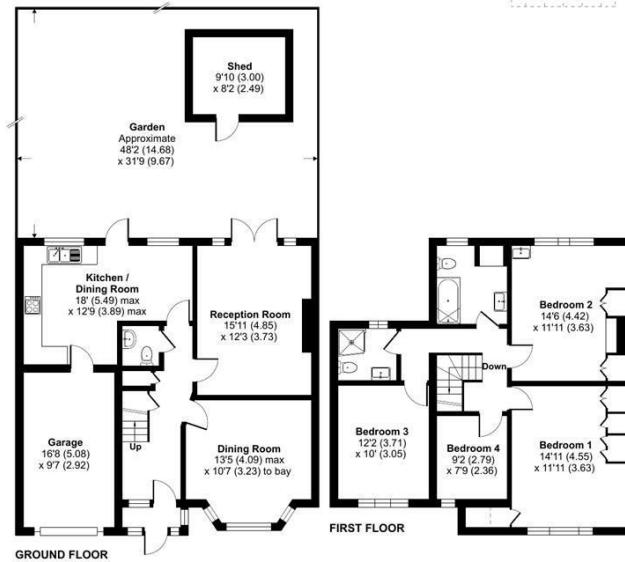
Garage = 160 sq ft / 14.8 sq m

Shed = 81 sq ft / 7.5 sq m

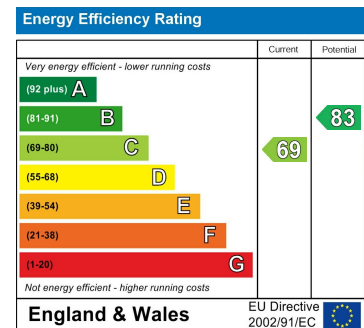
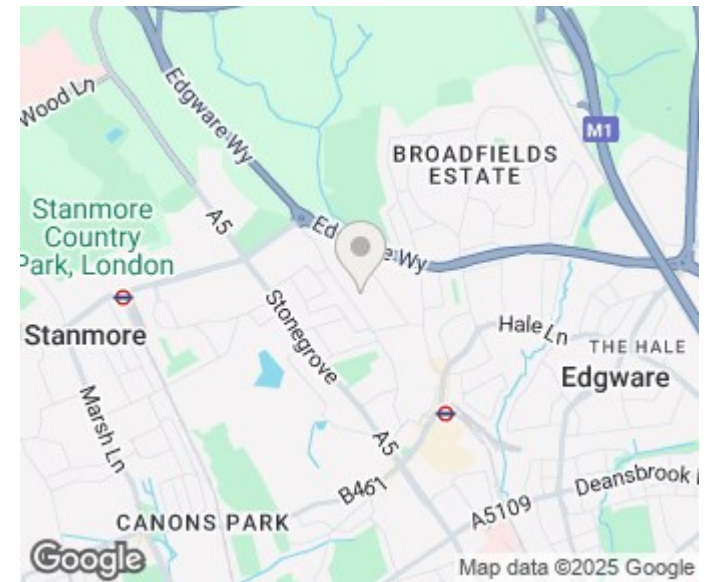
Total = 1737 sq ft / 161.3 sq m

For identification only - Not to scale

Denotes restricted  
head height



Floor plan produced in accordance with RICS Property Measurement 2nd Edition.  
Incorporating International Property Measurement Standards (IPMS2 Residential). © nrdhcom 2024.  
Produced for Taylor Hawkins. REF: 1219534



Agents Note: Whilst every care has been taken to prepare these particulars, they are for guidance purposes only. All measurements are approximate and are for general guidance purposes only and whilst every care has been taken to ensure their accuracy, they should not be relied upon and potential buyers/tenants are advised to recheck the measurements

Edgware Sales  
58 Edgware Way  
Edgware  
Middlesex  
HA8 8DJ

020 8958 2222  
property@taylorhawkins.co.uk  
<https://taylorhawkins.co.uk/>



TAYLOR HAWKINS  
Estate Agents  
0208 958 2222 / TaylorHawkins.co.uk