



WALTON ROAD

BUSHEY, WD23 2HR

£350,000
FREEHOLD

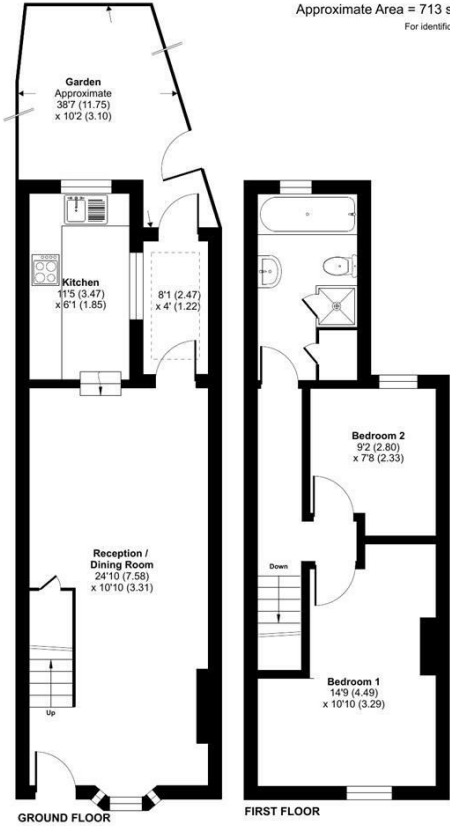
Taylor Hawkins presents this two-bedroom terraced house, ideally located within walking distance of both Bushey and Watford stations. The property is chain-free, spacious, and features a generously sized garden. It offers an open-plan living room and kitchen, perfect for modern living. Upstairs, the bedrooms are well-proportioned and spacious, providing comfortable accommodation throughout.



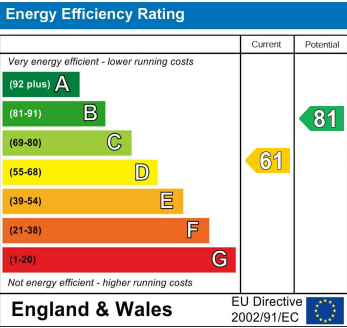
TAYLOR HAWKINS
Estate Agents
0208 958 2222 / TaylorHawkins.co.uk

Walton Road, Bushey, WD23

Approximate Area = 713 sq ft / 66.2 sq m
For identification only - Not to scale



Floor plan produced in accordance with RICS Property Measurement 2nd Edition, incorporating International Property Measurement Standards (IPMS2 Residential). © nrdhcom 2024. Produced for Taylor Hawkins. REF: 1287571



Agents Note: Whilst every care has been taken to prepare these particulars, they are for guidance purposes only. All measurements are approximate and are for general guidance purposes only and whilst every care has been taken to ensure their accuracy, they should not be relied upon and potential buyers/tenants are advised to recheck the measurements

Edgware Sales
58 Edgware Way
Edgware
Middlesex
HA8 8DJ

020 8958 2222
property@taylorhawkins.co.uk
<https://taylorhawkins.co.uk/>

