



BEECHFIELD CLOSE

BOREHAMWOOD, WD6 4NT

£475,000
FREEHOLD

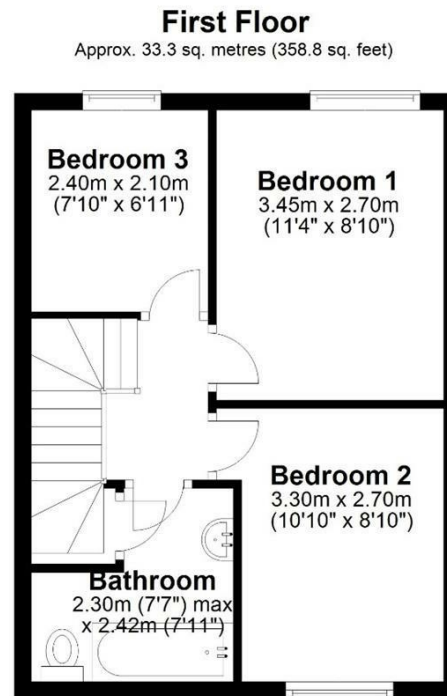
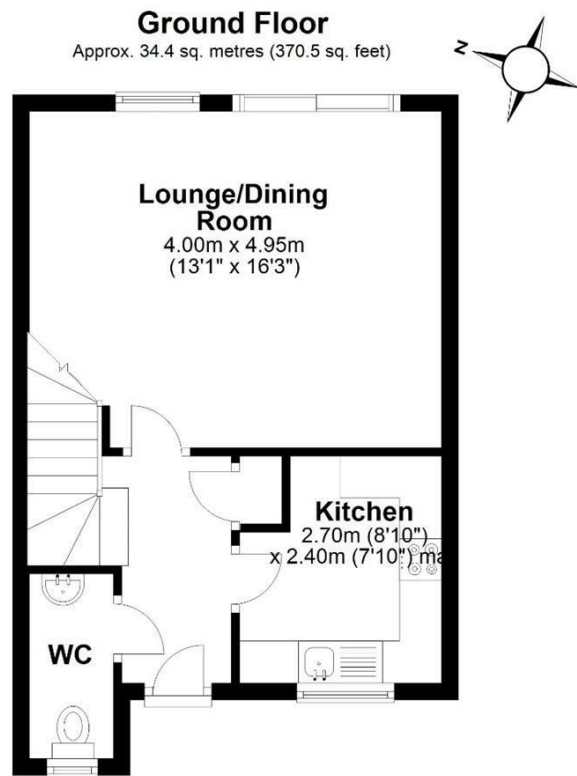
We are excited to present this splendid semi-detached house featuring three spacious bedrooms, designed to enhance your living experience. Upon entering, you'll find a smartly arranged layout that includes a separate kitchen area and a convenient downstairs guest WC. The property offers the added benefit of two off-street parking spaces and an expansive private garden, perfect for entertaining or future development (subject to planning approval).

Ideally situated just 0.7 miles from Elstree & Borehamwood train station, this home ensures easy commuting for your daily travels. Take a short and pleasant walk to Red Road Park, where you can enjoy leisurely strolls and various outdoor activities.

This property is available chain-free, providing a straightforward buying experience. Seize this opportunity to make this house your home and start creating unforgettable memories in a vibrant and well-connected community. Reach out to us today to arrange a viewing and explore the potential this property has to offer.



TAYLOR HAWKINS
Estate Agents
0208 958 2222 / TaylorHawkins.co.uk



Total area: approx. 67.8 sq. metres (729.3 sq. feet)

Floor Plan measurements are approximate and are for illustrative purposes only.
Plan produced using PlanUp.



Energy Efficiency Rating		
	Current	Potential
Very energy efficient - lower running costs		
(92 plus) A		
(81-91) B		
(69-80) C	69	78
(55-68) D		
(39-54) E		
(21-38) F		
(1-20) G		
Not energy efficient - higher running costs		
England & Wales	EU Directive 2002/91/EC	

Agents Note: Whilst every care has been taken to prepare these particulars, they are for guidance purposes only. All measurements are approximate and are for general guidance purposes only and whilst every care has been taken to ensure their accuracy, they should not be relied upon and potential buyers/tenants are advised to recheck the measurements

Edgware Sales
58 Edgware Way
Edgware
Middlesex
HA8 8DJ

020 8958 2222
property@taylorhawkins.co.uk
<https://taylorhawkins.co.uk/>



TAYLOR HAWKINS
Estate Agents
0208 958 2222 / [TaylorHawkins.co.uk](https://taylorhawkins.co.uk)