



LADBROKE GROVE

LONDON, W10 5LZ

£1,600

Taylor Hawkins Brings to market this lovely top floor apartment overseeing Ladbrooke Grove W10.

The flat is situated in a stunning location and close to many amenities shops and transport links across London.

The flat offer a double bedroom, separate kitchen and bathroom , a private bathroom and a full kitchen.

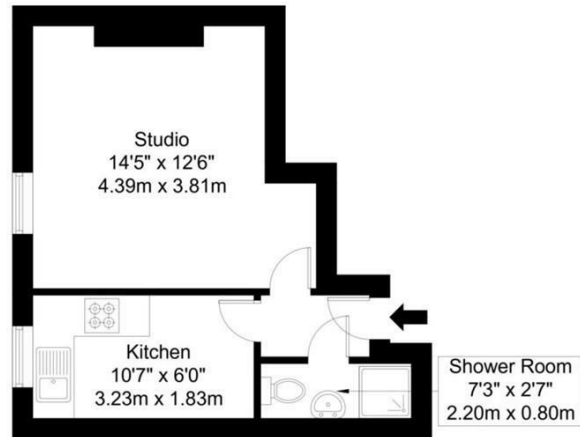
There is access to common garden and Washing machine & dryer area as a plus.



TAYLOR HAWKINS
Estate Agents
0208 958 2222 / TaylorHawkins.co.uk

Ladbroke Grove, W105LZ

Approx Gross Internal Area = 23.93 sq m / 258 sq ft



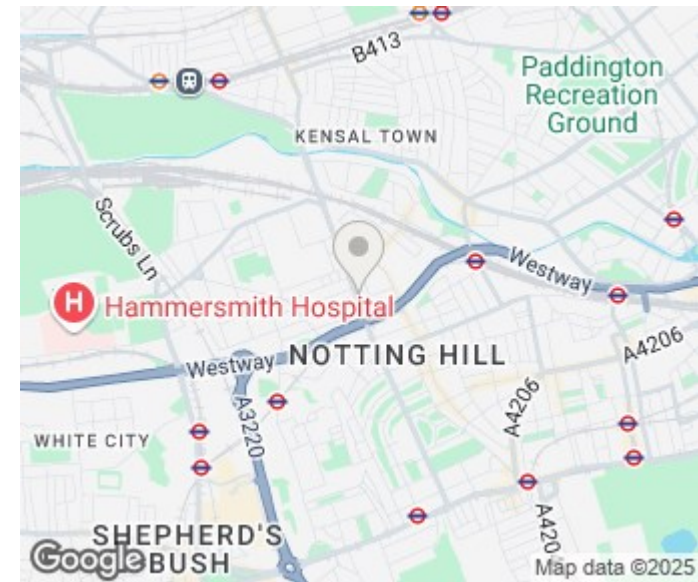
Third Floor

Ref :

Copyright

**BLEU
PLAN**

The Floor plan is not to scale and measurements and areas shown are approximate and therefore should be used for illustrative purposes only. The plan has been prepared in accordance with the RICS code of Measuring Practice and whilst we have confidence in the information produced it must not be relied on. Maximum lengths and widths are represented on the floor plan. If there is any aspect of particular importance, you should carry out or commission your own inspection of the property.
Copyright © BleuPlan



Energy Efficiency Rating		
	Current	Potential
Very energy efficient - lower running costs		
(92 plus) A		
(81-91) B		
(69-80) C		
(55-68) D		
(39-54) E		
(21-38) F		
(1-20) G		
Not energy efficient - higher running costs		
England & Wales	EU Directive 2002/91/EC	



Agents Note: Whilst every care has been taken to prepare these particulars, they are for guidance purposes only. All measurements are approximate and are for general guidance purposes only and whilst every care has been taken to ensure their accuracy, they should not be relied upon and potential buyers/tenants are advised to recheck the measurements

Edgware Sales
58 Edgware Way
Edgware
Middlesex
HA8 8DJ

020 8958 2222
property@taylorhawkins.co.uk
<https://taylorhawkins.co.uk/>