



## PRIORY FIELD DRIVE

### EDGWARE, HA8 9QU

**£400,000**  
**LEASEHOLD**

Taylor Hawkins is delighted to present this chain-free, charming, and spacious 2-bedroom ground-floor flat, located close to schools, shops, and public transport links.

The property features two bedrooms, with the master bedroom benefiting from its own ensuite. The reception area is open and spacious, adding to the overall comfort of the home. The flat has been very well-maintained and is spotless throughout.

Additionally, there is an allocated parking space.

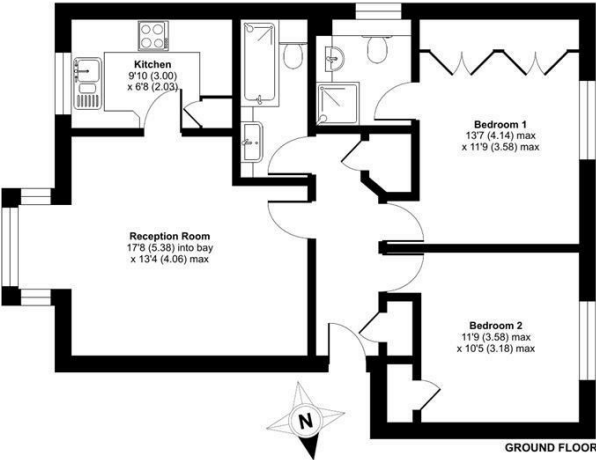
Call us today to arrange a viewing!



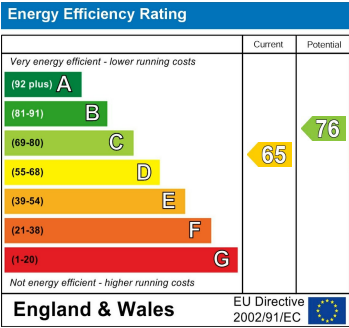
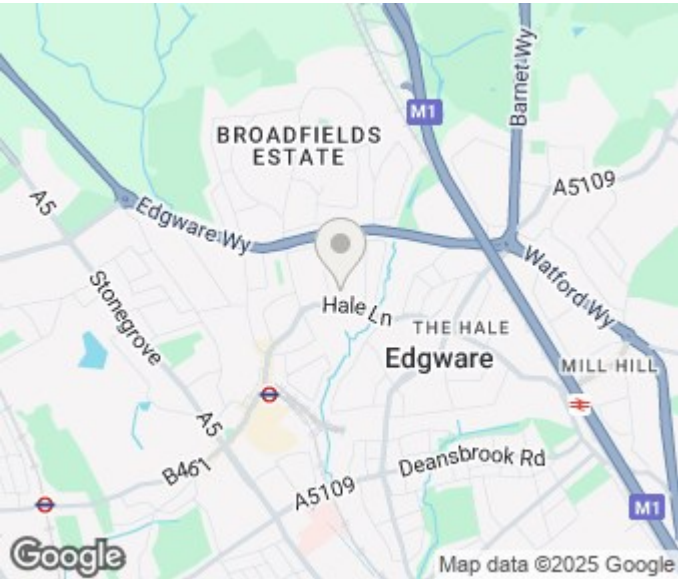
**TAYLOR HAWKINS**  
Estate Agents  
0208 958 2222 / TaylorHawkins.co.uk

Sandringham Court, Priory Field Drive, Edgware, HA8

Approximate Area = 699 sq ft / 65 sq m  
For identification only - Not to scale



Floor plan produced in accordance with RICS Property Measurement 2nd Edition, incorporating International Property Measurement Standards (IPMS2 Residential). © nrdhcom 2024. Produced for Taylor Hawkins. REF: 1228245.



Agents Note: Whilst every care has been taken to prepare these particulars, they are for guidance purposes only. All measurements are approximate and are for general guidance purposes only and whilst every care has been taken to ensure their accuracy, they should not be relied upon and potential buyers/tenants are advised to recheck the measurements

Edgware Sales  
58 Edgware Way  
Edgware  
Middlesex  
HA8 8DJ

020 8958 2222  
property@taylorhawkins.co.uk  
<https://taylorhawkins.co.uk/>

