



## ELSINORE GARDENS

LONDON, NW2 1SS

£750,000  
FREEHOLD

Taylor Hawkins presents this beautiful 3-bedroom terraced house, a perfect family home located in a secure gated community between Golders Green and Cricklewood, just off The Vale. The property features a convenient downstairs toilet, a spacious living room, and a charming conservatory at the rear that adds to its appeal. Additionally, the house offers ample storage space, a private parking spot, and 6 visitor parking spaces, ensuring plenty of room for guests. This home is an excellent choice for those seeking comfort and convenience in a desirable location.

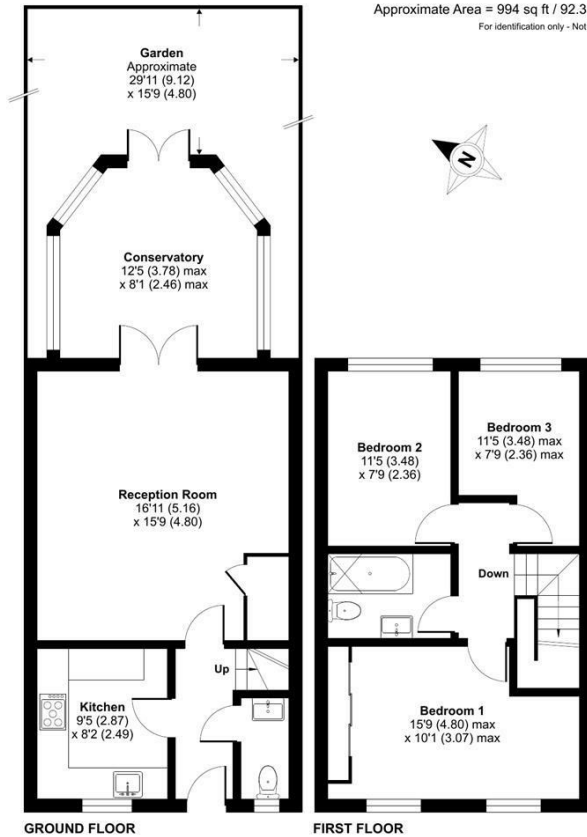


TAYLOR HAWKINS  
Estate Agents  
0208 958 2222 / Taylor-hawkins.co.uk



## Elsinore Gardens, London, NW2

Approximate Area = 994 sq ft / 92.3 sq m  
For identification only - Not to scale



Certified Property Measurer  
Floor plan produced in accordance with RICS Property Measurement Standards incorporating International Property Measurement Standards (IPMS2 Residential). © ricscom 2024.  
Produced for Taylor Hawkins. REF: 1133437



Energy Efficiency Rating		
	Current	Potential
Very energy efficient - lower running costs		
(92 plus) <b>A</b>		
(81-91) <b>B</b>		
(69-80) <b>C</b>		
(55-68) <b>D</b>		
(39-54) <b>E</b>		
(21-38) <b>F</b>		
(1-20) <b>G</b>		
Not energy efficient - higher running costs		
<b>England &amp; Wales</b>	EU Directive	
	2002/91/EC	

Agents Note: Whilst every care has been taken to prepare these particulars, they are for guidance purposes only. All measurements are approximate and are for general guidance purposes only and whilst every care has been taken to ensure their accuracy, they should not be relied upon and potential buyers/tenants are advised to recheck the measurements

Edgware Sales  
58 Edgware Way  
Edgware  
Middlesex  
HA8 8DJ

020 8958 2222  
property@taylorhawkins.co.uk  
<https://taylorhawkins.co.uk/>



**TAYLOR HAWKINS**  
Estate Agents  
0208 958 2222 / [Taylorhawkins.co.uk](https://taylorhawkins.co.uk)