



SOMERSET AVENUE

LUTON, LU2 0PN

£355,000
FREEHOLD

Taylor Hawkins is delighted to bring to market this exquisite 3bedroom semi-detached family residence, nestled in a highly desirable neighborhood just moments away from local supermarkets and convenient transportation links in Luton. The house boasts a generous layout, this home offers a dining room, reception area, perfect for both entertaining guests and unwinding after a long day. The front lounge is graced with expansive bay windows creating a bright and inviting atmosphere. There is a unique kitchen which supplies access to the beautifully up kept rear garden. The first floor comprises a spacious master bedroom adorned with bay windows, accompanied by two additional generously proportioned bedrooms and a well-appointed bathroom. Externally, the property provides off-road parking on a driveway with a convenient side entrance situated to private rear garden, complete with a manicured lawn, and inviting patio area, adds the finishing touch to this splendid residence. Please reach out if you would like to view the property.

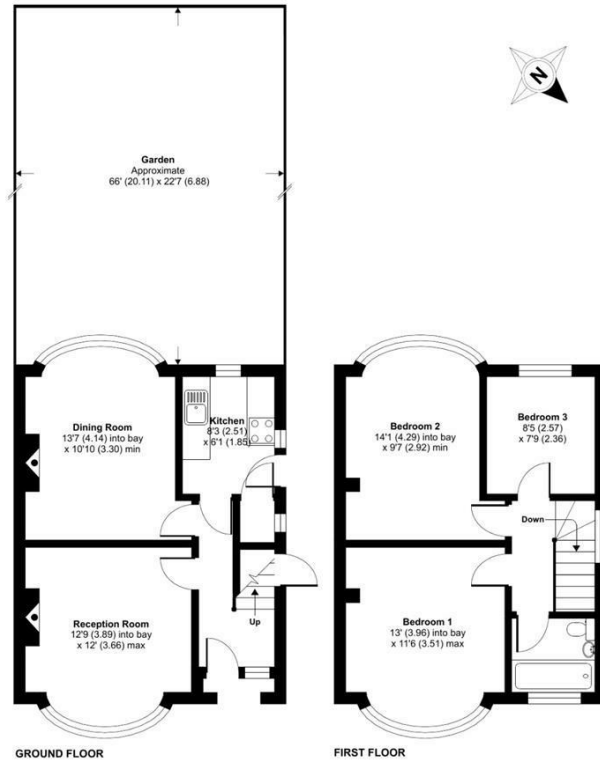


TAYLOR HAWKINS
Estate Agents
0208 958 2222 / Taylor-hawkins.co.uk

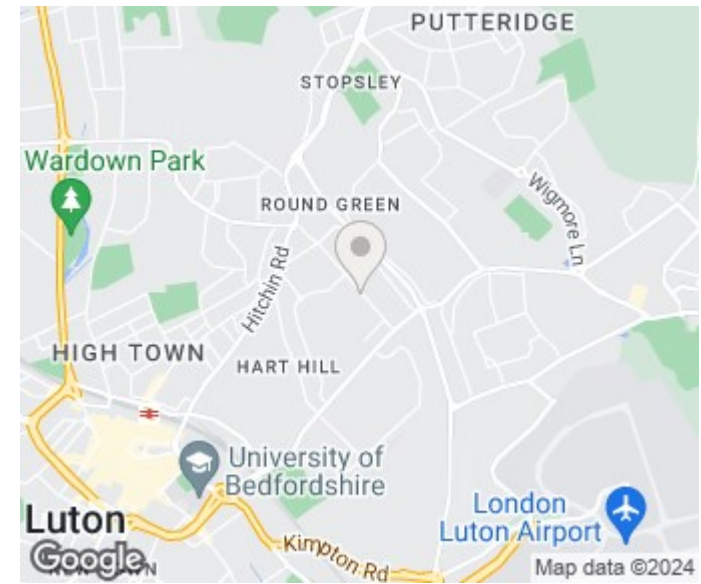
Somerset Avenue, LU2

Approximate Area = 871 sq ft / 80.9 sq m

For identification only - Not to scale



Floor plan produced in accordance with RICS Property Measurement Standards incorporating International Property Measurement Standards (IPMS2 Residential). © rchecom 2024. Produced for Taylor Hawkins. REF: 1127412



Energy Efficiency Rating		
	Current	Potential
Very energy efficient - lower running costs		
(92 plus) A		
(81-91) B		
(69-80) C		
(55-68) D		
(39-54) E		
(21-38) F		
(1-20) G		
Not energy efficient - higher running costs		
England & Wales	EU Directive 2002/91/EC	

Agents Note: Whilst every care has been taken to prepare these particulars, they are for guidance purposes only. All measurements are approximate and are for general guidance purposes only and whilst every care has been taken to ensure their accuracy, they should not be relied upon and potential buyers/tenants are advised to recheck the measurements

Edgware Sales
58 Edgware Way
Edgware
Middlesex
HA8 8DJ

020 8958 2222
property@taylorhawkins.co.uk
<https://taylorhawkins.co.uk/>



TAYLOR HAWKINS
Estate Agents

0208 958 2222 / [Taylorhawkins.co.uk](https://taylorhawkins.co.uk)