



FAIRMEAD CRESCENT

EDGWARE, HA8 8YR

£549,995
FREEHOLD

General Layout:

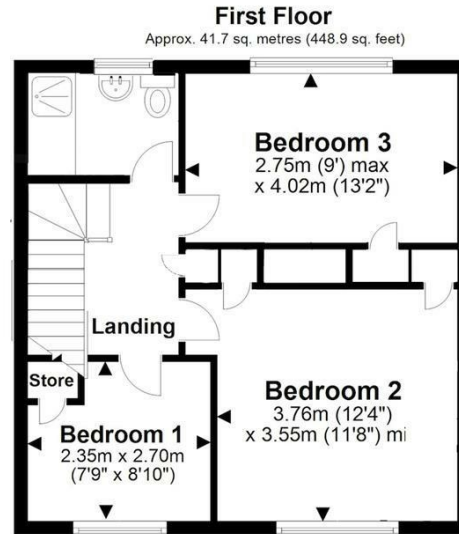
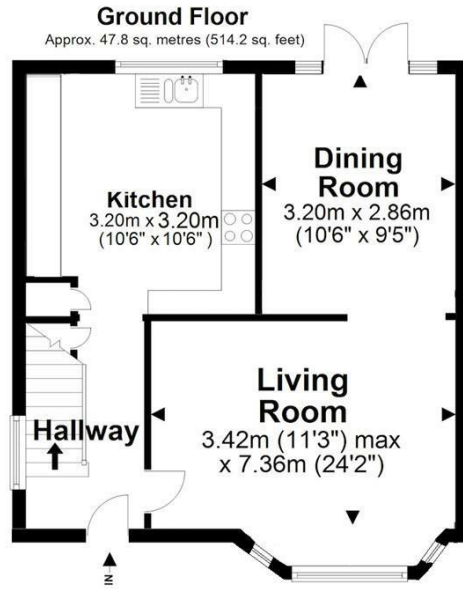
The property is a two-story mid terrace house with a practical layout. The ground floor consists of a spacious living room, a kitchen with modern fittings, and a dining area, totalling approximately 47.8 square meters. The first floor houses three bedrooms and has a bathroom, with a total area of approximately 41.7 square meters. The overall square footage of the property is around 89.5 square meters.

Living Room:

The living room is generous in size, with a large window providing plenty of natural light. It features laminate flooring.



TAYLOR HAWKINS
Estate Agents
0208 958 2222 / Taylor-hawkins.co.uk



Total area: approx. 89.5 sq. metres (963.1 sq. feet)

All images used are for illustrative purposes only. Floor plans are intended to give a general indication of the proposed layout only. All images and dimensions are not intended to form part any contract or warranty.
Plan produced using PlanUp.



Energy Efficiency Rating		Current	Potential
Very energy efficient - lower running costs			
(92 plus) A			85
(81-91) B			
(69-80) C		70	
(55-68) D			
(39-54) E			
(21-38) F			
(1-20) G			
Not energy efficient - higher running costs			
England & Wales		EU Directive 2002/91/EC	

Agents Note: Whilst every care has been taken to prepare these particulars, they are for guidance purposes only. All measurements are approximate and are for general guidance purposes only and whilst every care has been taken to ensure their accuracy, they should not be relied upon and potential buyers/tenants are advised to recheck the measurements

Edgware Sales
58 Edgware Way
Edgware
Middlesex
HA8 8DJ

020 8958 2222
property@taylorhawkins.co.uk
<https://taylorhawkins.co.uk/>



TAYLOR HAWKINS
Estate Agents

0208 958 2222 / [Taylorhawkins.co.uk](https://taylorhawkins.co.uk)