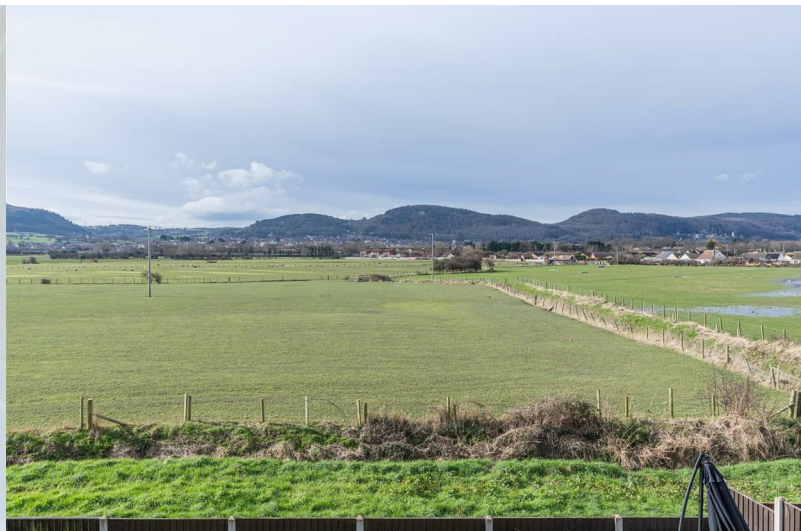




Lon Glanfor

Belgrano, Abergele, LL22 9YQ

Offers over £290,000



Lon Glanfor

Belgrano, Abergele, LL22 9YQ

Offers over £290,000



Hall

Lounge

12'4" x 10'7" (3.78m x 3.23m)

WC

Kitchen

18'6" x 10'7" (5.66m x 3.23)

Dining/Family Space

16'7" x 7'6" (5.08m x 2.29m)

Utility

5'7" x 4'10" (1.72m x 1.49m)

Landing

Bedroom One

11'1" x 10'9" (3.40m x 3.28m)

En-suite

Bedroom Two

10'5" x 8'2" (3.18m x 2.51m)

Bedroom Three

8'2" x 7'8" (2.51m x 2.36m)

Bathroom

8'3" x 5'6" (2.53m x 1.68m)

Office & External

8'0" x 8'0" (2.44m x 2.44m)

For those who seek a balance between work and leisure, a purpose-built office in the garden offers a dedicated space to focus and create, surrounded by the natural beauty of the south-facing garden. Thoughtfully landscaped for outdoor living, the garden provides an idyllic setting for al fresco dining, entertaining guests, or simply basking in the sun.



Road Map



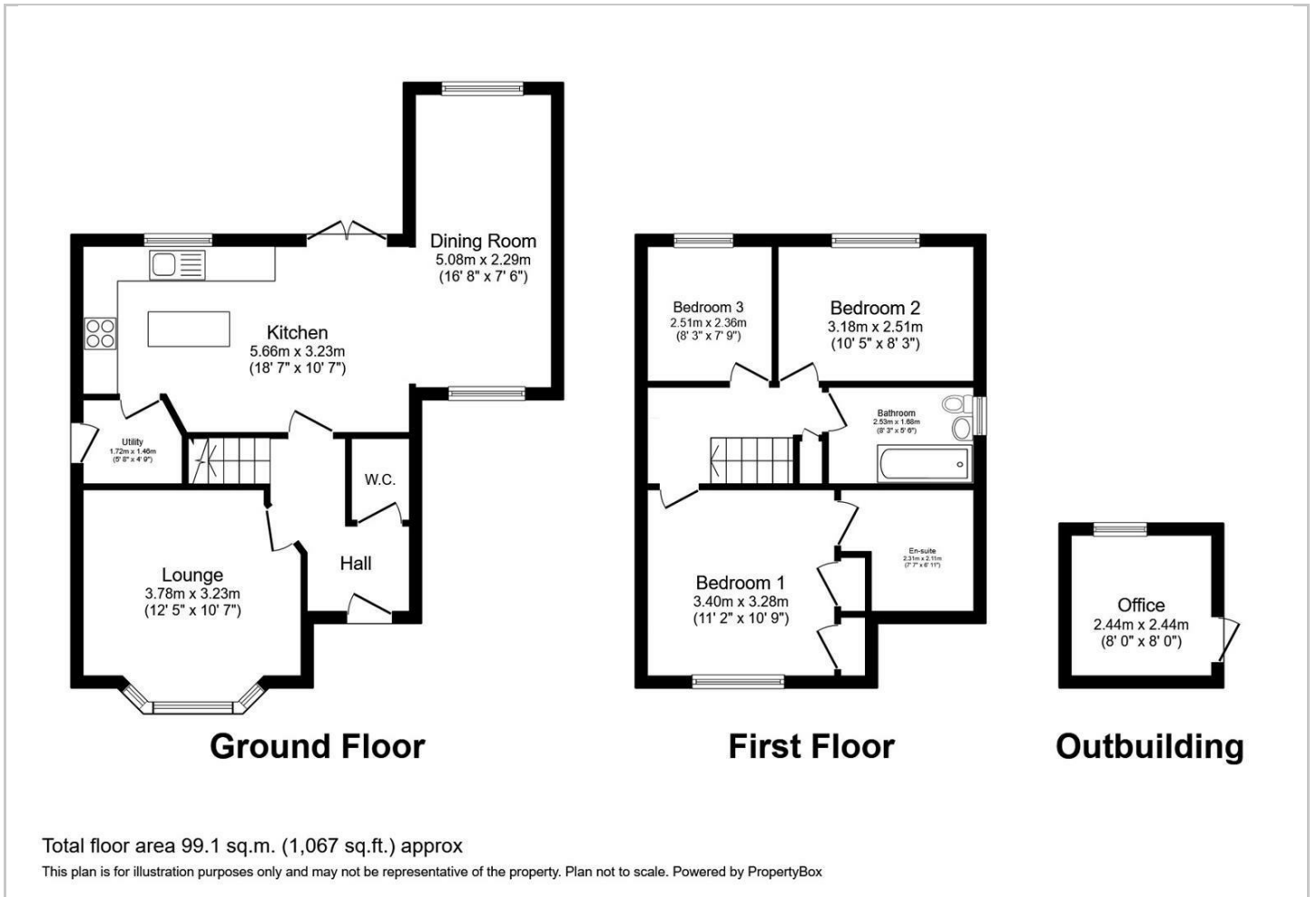
Hybrid Map



Terrain Map



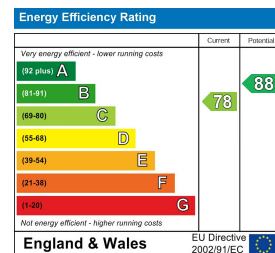
Floor Plan



Viewing

Please contact our Idris Estates Head Office Office on 01745 630322 if you wish to arrange a viewing appointment for this property or require further information.

Energy Efficiency Graph



These particulars, whilst believed to be accurate are set out as a general outline only for guidance and do not constitute any part of an offer or contract. Intending purchasers should not rely on them as statements of representation of fact, but must satisfy themselves by inspection or otherwise as to their accuracy. No person in this firm's employment has the authority to make or give any representation or warranty in respect of the property.