



Gwernaffield Road

Gwernaffield, Mold, CH7 5DD

Offers over £240,000



Gwernaffield Road

Gwernaffield, Mold, CH7 5DD

Offers over £240,000



The Tour

Framed with colourful wildflowers the lawned garden invites you in to this characterful red-brick house. Entering through the small hallway, you step into the light and bright living area with period feature fireplace that is in keeping with the property build of 1909. With wool carpets and neutral décor, this room is perfect for an evening of relaxation.

Onto the kitchen and dining area, this large room has plenty of space to entertain with a four seater table, built-in wine rack, ample storage and original cast-iron fireplace; a great centrepiece feature of the room. Leading on through the stable doors is the gorgeous conservatory. With floor-to-ceiling glass panels, the room becomes a stunning blend of indoor and outdoor living. The natural light pours in, creating a warm and inviting atmosphere. It gives you a room filled with natural light that becomes a peaceful retreat to read a book or enjoy your morning coffee surrounded by nature.

Heading upstairs, you discover two spacious double bedrooms, each with its own charm. The hardwood flooring adds a classic elegance, while

the original cast iron fireplaces, create a sense of character and history. Large windows invite natural light to fill the rooms, offering lovely views and making the space feel airy and inviting. The large bathroom complements the bedrooms perfectly, balancing modern convenience with timeless style with a bathtub, basin, WC, and storage cupboard.

This charming period cottage comes with the added value of sizeable le outbuildings, providing plenty of versatility. Currently serving as an extra WC, shed, and utility room with electricity and water. These spaces offer endless possibilities for versatility asa home office, workshop or even a garden retreat. With a little imagination, you can create a unique space that perfectly reflects your personal style and needs.

The Exterior

The extra patio space between the house and the outbuildings create a lovely spot for gatherings, especially with the fire pit setting and atmosphere. There is also a small decked area behind the outbuildings, offering a perfect place to relax and soak up the sun. The expansive lawned garden, bordered by tall green hedges, provides a

wonderful sense of privacy—making it feel like your own personal oasis.

The Location

The sought after village of Gwernaffield sits on the outskirts of the castled town of Mold .The charm of village life combined with the convenience of town amenities. With a local pub, bus links, and a golf course right on your doorstep, it's easy to enjoy a leisurely lifestyle. Having Loggerheads Country Park and Moel Famau nearby means you'll have access to stunning walks and outdoor adventures. It really is the ideal spot for those who appreciate nature and community.

Hall

Lounge

13'3" x 12'11" (4.05m x 3.96m)

Kitchen, Diner

17'4" x 11'5" (5.30m x 3.50m)

Conservatory

12'0" x 8'6" (3.67m x 2.60m)

Landing

Bedroom One

17'5" x 13'0" (5.31m x 3.97m)

Bedroom Two

11'10" x 9'8" (3.62m x 2.95m)

Bathroom

7'2" x 6'3" (2.20m x 1.93m)

Outbuilding, Utility

10'3" x 7'1" (3.13m x 2.16m)

Outbuilding, Storage

7'2" x 6'10" (2.20m x 2.10m)

Outbuilding, WC



Road Map



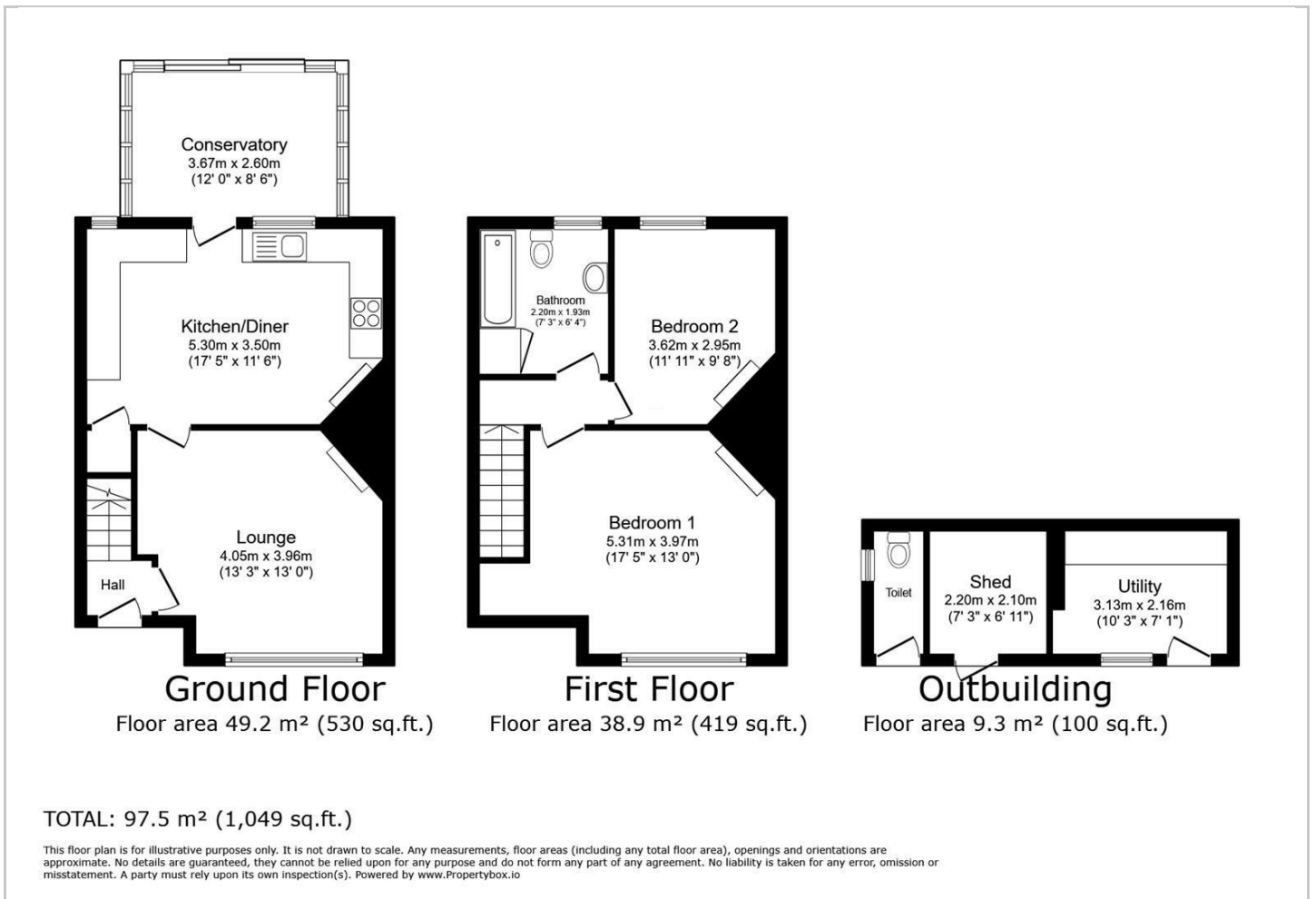
Hybrid Map



Terrain Map



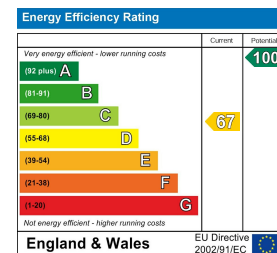
Floor Plan



Viewing

Please contact our Idris Head Office Office on 01745 630322 if you wish to arrange a viewing appointment for this property or require further information.

Energy Efficiency Graph



These particulars, whilst believed to be accurate are set out as a general outline only for guidance and do not constitute any part of an offer or contract. Intending purchasers should not rely on them as statements of representation of fact, but must satisfy themselves by inspection or otherwise as to their accuracy. No person in this firm's employment has the authority to make or give any representation or warranty in respect of the property.