



2 Trem Y Don

Llysfaen, Colwyn Bay, LL29 8FJ

Offers over £325,000



2 Trem Y Don

Llysfaen, Colwyn Bay, LL29 8FJ

Offers over £325,000



Lounge

14'8" x 11'0" (4.49m x 3.37m)

Kitchen

17'2" x 9'3" (5.24m x 2.84m)

Snug

9'5" x 9'0" (2.89m x 2.76m)

Diner

16'8" x 8'2" (5.09m x 2.50m)

W/C

Hall

Bedroom One

11'4" x 10'5" (3.46m x 3.20m)

Bedroom Two

10'1" x 9'3" (3.08m x 2.82m)

Bedroom Three

14'5" x 7'7" (4.41m x 2.32m)

Bedroom Four

9'3" x 6'6" (2.84m x 1.99m)

Bedroom Five

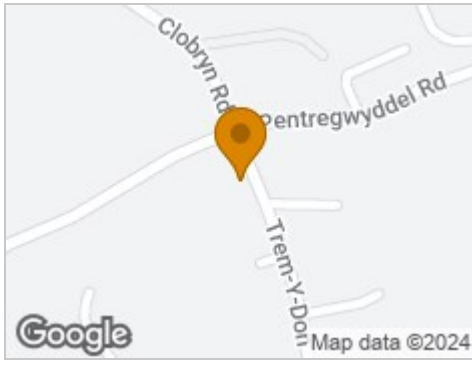
8'7" x 6'6" (2.62m x 1.99m)

Bathroom

External



Road Map



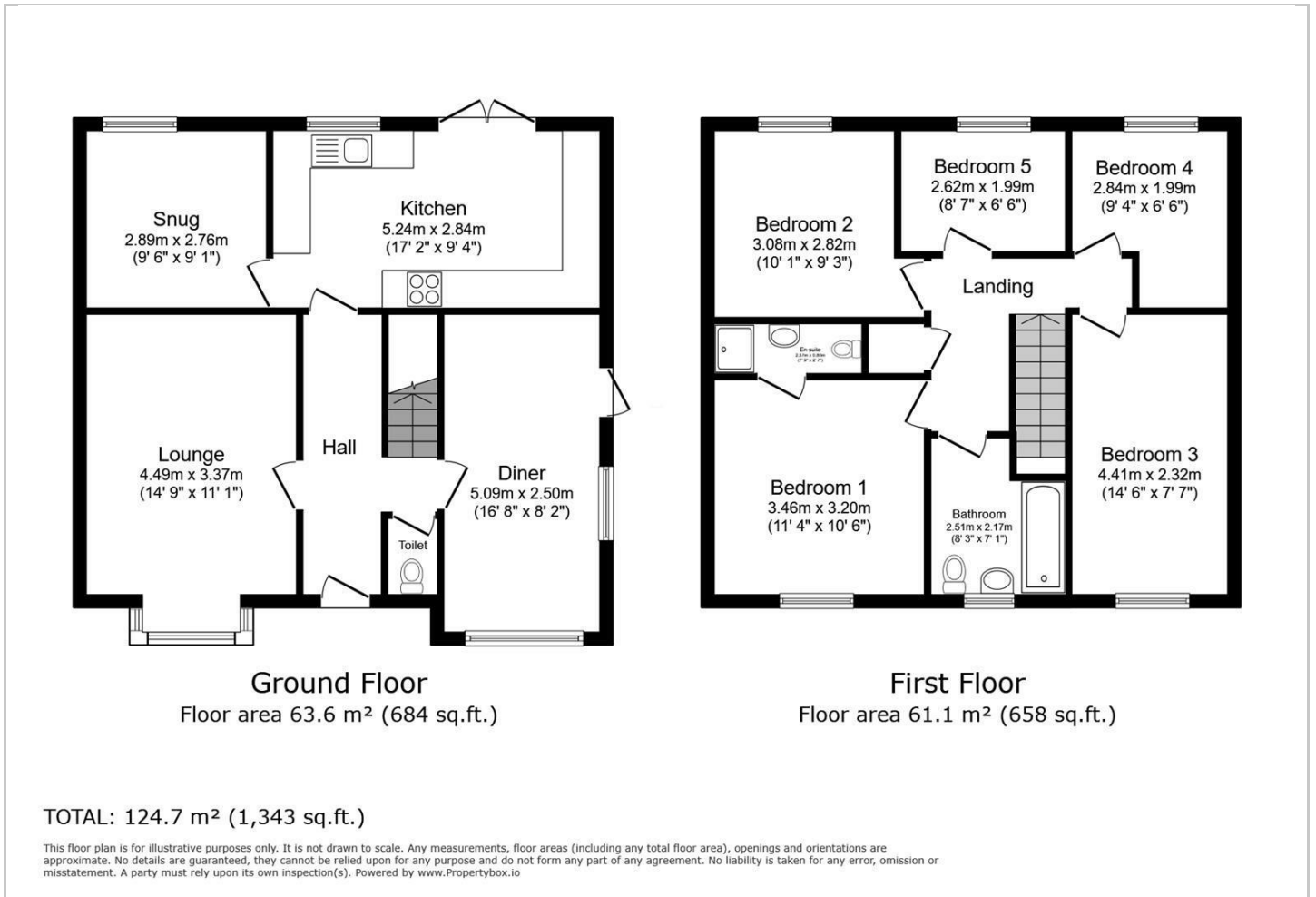
Hybrid Map



Terrain Map



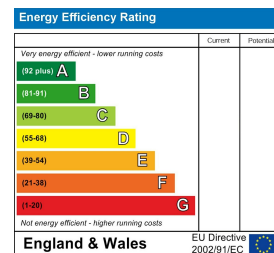
Floor Plan



Viewing

Please contact our Idris Estates Head Office Office on 01745 630322 if you wish to arrange a viewing appointment for this property or require further information.

Energy Efficiency Graph



These particulars, whilst believed to be accurate are set out as a general outline only for guidance and do not constitute any part of an offer or contract. Intending purchasers should not rely on them as statements of representation of fact, but must satisfy themselves by inspection or otherwise as to their accuracy. No person in this firm's employment has the authority to make or give any representation or warranty in respect of the property.