



Cae Eithin

, Abergele, LL22 8FN

Offers over £350,000



Cae Eithin

, Abergele, LL22 8FN

Offers over £350,000



Hallway

Lounge

15'5" x 13'1" (4.71m x 4.00m)

Kitchen / Diner

23'7" x 17'8" (7.19m x 5.41m)

Utility

6'6", 16'4" x 6'2" (2,05m x 1.89m)

Downstairs Cloakroom (WC)

Landing

Bedroom One

14'5" x 13'1" (4.40m x 4.01m)

Ensuite

Bedroom Two

14'1" x 8'10" (4.31m x 2.71m)

Ensuite

Bedroom Three

12'5" x 8'3" (3.79m x 2.54m)

Bedroom Four

12'0" x 9'8" (3.67m x 2.96m)

Bathroom

8'4" x 6'6" (2.55m x 2.0m)

External

Garage



Road Map



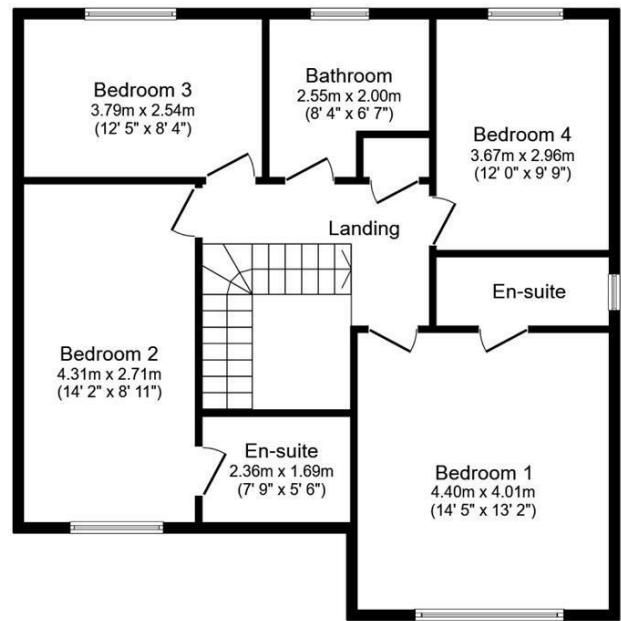
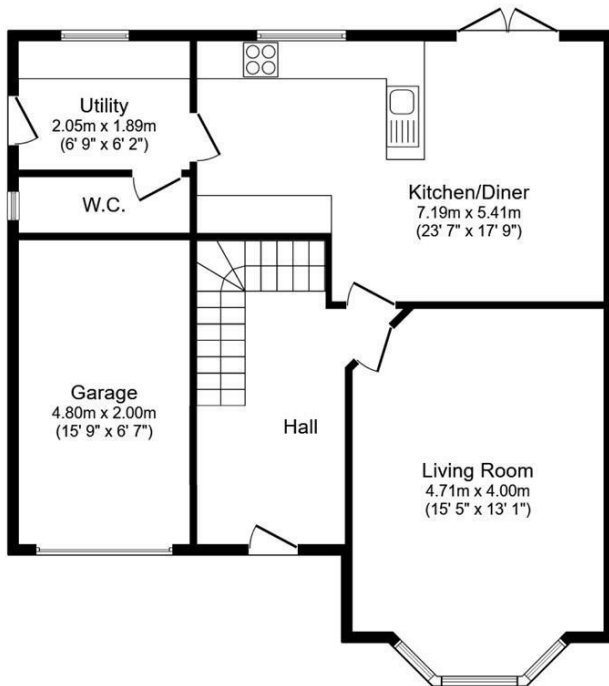
Hybrid Map



Terrain Map



Floor Plan



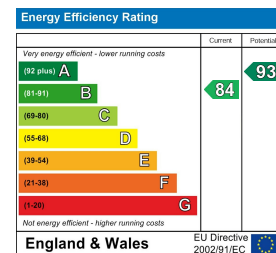
TOTAL: 160.8 m² (1,731 sq.ft.)

This floor plan is for illustrative purposes only. It is not drawn to scale. Any measurements, floor areas (including any total floor area), openings and orientations are approximate. No details are guaranteed, they cannot be relied upon for any purpose and do not form any part of any agreement. No liability is taken for any error, omission or misstatement. A party must rely upon its own inspection(s). Powered by www.Propertybox.io

Viewing

Please contact our Idris Estates Head Office Office on 01745 630322 if you wish to arrange a viewing appointment for this property or require further information.

Energy Efficiency Graph



These particulars, whilst believed to be accurate are set out as a general outline only for guidance and do not constitute any part of an offer or contract. Intending purchasers should not rely on them as statements of representation of fact, but must satisfy themselves by inspection or otherwise as to their accuracy. No person in this firm's employment has the authority to make or give any representation or warranty in respect of the property.