



## 2 Deganwy Lodge 5 Deganwy Road

Deganwy, Conwy, LL31 9DH

**Offers over £230,000**



# 2 Deganwy Lodge 5 Deganwy Road

Deganwy, Conwy, LL31 9DH

**Offers over £230,000**



## **Lounge**

19'1" x 15'10" (5.84m x 4.85m)

## **Kitchen**

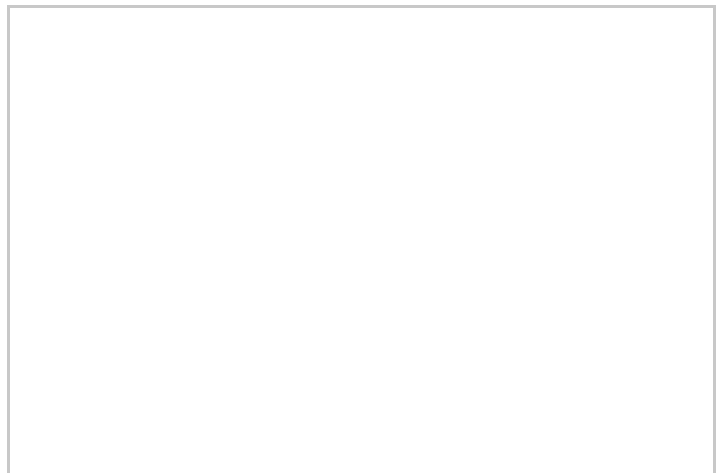
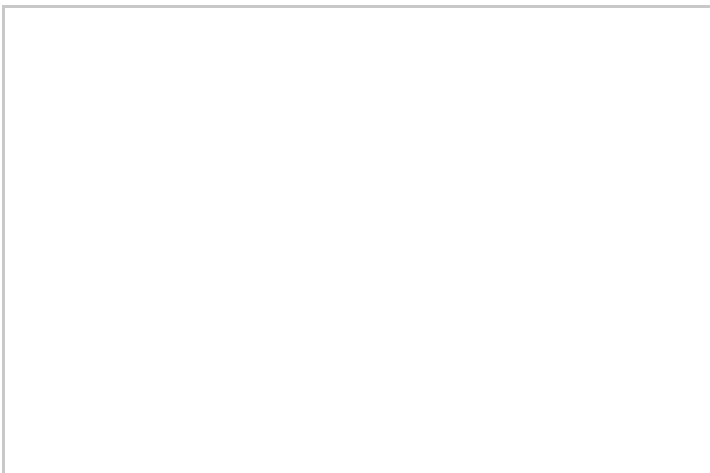
14'9" x 9'3" (4.52m x 2.84m)

## **Bedroom One**

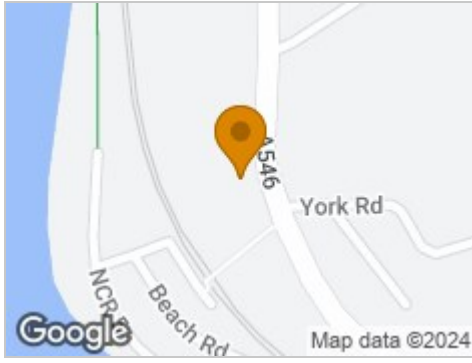
15'0" x 10'0" (4.58m x 3.07m)

## **Bedroom Two**

11'6" x 10'2" (3.52m x 3.12m)



## Road Map



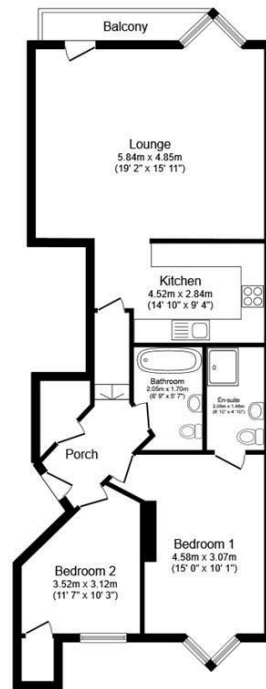
## Hybrid Map



## Terrain Map



## Floor Plan



### Floor Plan

Floor area 86.3 sq.m. (929 sq.ft.)

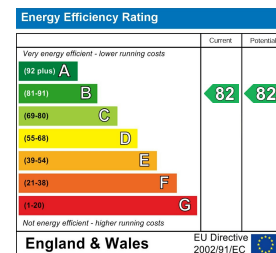
TOTAL: 86.3 sq.m. (929 sq.ft.)

This floor plan is for illustrative purposes only. It is not drawn to scale. Any measurements, floor areas (including any total floor area), openings and orientations are approximate. No details are guaranteed, they cannot be relied upon for any purpose and do not form any part of any agreement. No liability is taken for any error, omission or misstatement. A party must rely upon its own inspection(s). Powered by www.Propertybox.io

## Viewing

Please contact our Idris Estates Head Office Office on 01745 630322 if you wish to arrange a viewing appointment for this property or require further information.

## Energy Efficiency Graph



These particulars, whilst believed to be accurate are set out as a general outline only for guidance and do not constitute any part of an offer or contract. Intending purchasers should not rely on them as statements of representation of fact, but must satisfy themselves by inspection or otherwise as to their accuracy. No person in this firm's employment has the authority to make or give any representation or warranty in respect of the property.