



## 3 Pentre Canol

Old Colwyn, Colwyn Bay, LL29 8US

**£315,000**



# 3 Pentre Canol

Old Colwyn, Colwyn Bay, LL29 8US

**£315,000**



## Lounge

14'1" x 11'4" (4.31m x 3.47m)

## Kitchen/Dining Room

23'5" x 12'3" (7.15m x 3.75m)

## Utility

7'8" x 5'5" (2.34m x 1.66m)

## Bedroom One

12'11" x 11'4" (3.96m x 3.46m)

## Bedroom Two

11'4" x 9'2" (3.46m x 2.81m)

## Bedroom Three

10'9" x 7'1" (3.29m x 2.18m)

## Bedroom Four

7'0" x 6'7" (2.14m x 2.01m)

## Garage

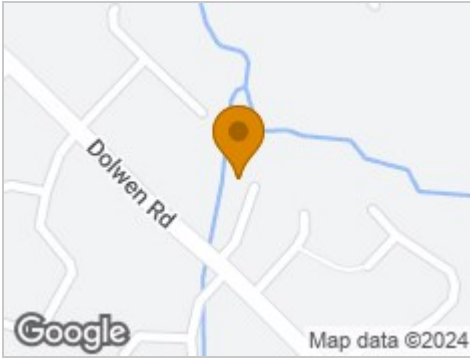
16'6" x 8'9" (5.05m x 2.69m)

## External

From the advantage of having a drive to have a good size enclosed low maintenance back garden this property has great outside space with access to the garden via a side gate from the front.



## Road Map



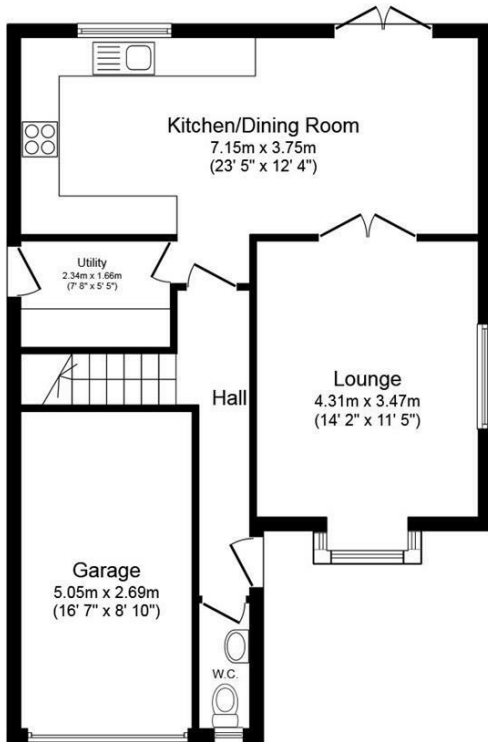
## Hybrid Map



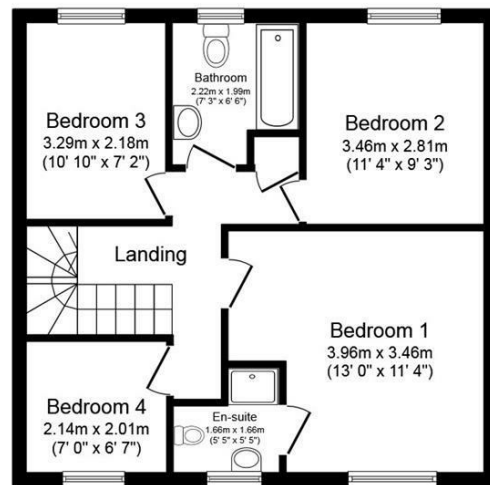
## Terrain Map



## Floor Plan



**Ground Floor**



**First Floor**

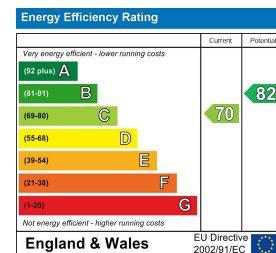
Total floor area 116.2 sq.m. (1,250 sq.ft.) approx

This plan is for illustration purposes only and may not be representative of the property. Plan not to scale. Powered by PropertyBox

## Viewing

Please contact our Idris Estates Head Office Office on 01745 630322 if you wish to arrange a viewing appointment for this property or require further information.

## Energy Efficiency Graph



These particulars, whilst believed to be accurate are set out as a general outline only for guidance and do not constitute any part of an offer or contract. Intending purchasers should not rely on them as statements of representation of fact, but must satisfy themselves by inspection or otherwise as to their accuracy. No person in this firm's employment has the authority to make or give any representation or warranty in respect of the property.