



12 Grove Road

, Colwyn Bay, LL29 8ER

Offers over £250,000



12 Grove Road

, Colwyn Bay, LL29 8ER

Offers over £250,000



Kitchen

18'9" x 11'6" (5.72m x 3.51m)

Lounge

13'1" x 12'8" (4.00m x 3.87m)

Dining Room

12'8" x 12'5" (3.87m x 3.81m)

Conservatory

6'10" x 6'0" (2.10m x 1.85m)

Bathroom

Bedroom one

11'8" x 7'7" (3.56m x 2.32m)

Bedroom two

12'3" x 12'1" (3.74m x 3.69m)

Bedroom Three

5'10" x 9'4" (1.78m x 2.87m)

Bedroom four

12'7" x 12'3" (3.85m x 3.75m)

Bedroom five

13'3" x 11'11" (4.04m x 3.65m)

Bedroom six

5'9" x 9'2" (1.77m x 2.81m)

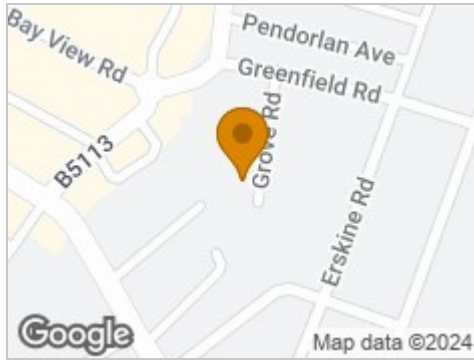
External

Rear yard with a decked area leading out from the

conservatory double doors. The front yard is enclosed with a wall and access via a gate, You also have access around the side of the property to the rear, Driveway allowing space for at least two cars.



Road Map



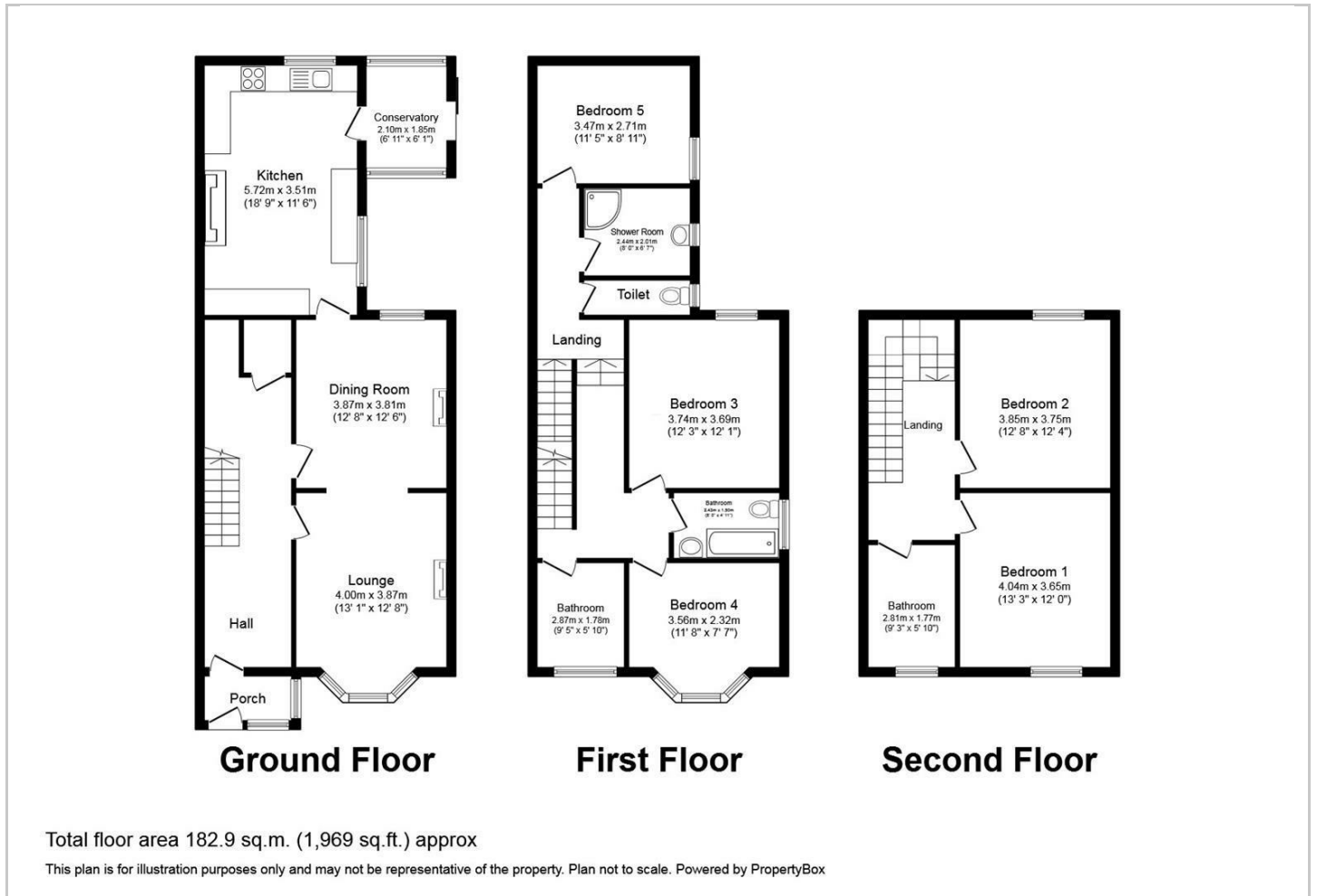
Hybrid Map



Terrain Map



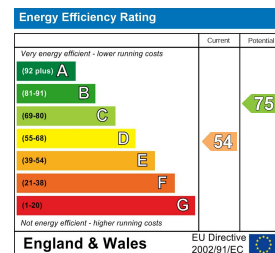
Floor Plan



Viewing

Please contact our Idris Estates Head Office Office on 01745 630322 if you wish to arrange a viewing appointment for this property or require further information.

Energy Efficiency Graph



These particulars, whilst believed to be accurate are set out as a general outline only for guidance and do not constitute any part of an offer or contract. Intending purchasers should not rely on them as statements of representation of fact, but must satisfy themselves by inspection or otherwise as to their accuracy. No person in this firm's employment has the authority to make or give any representation or warranty in respect of the property.