




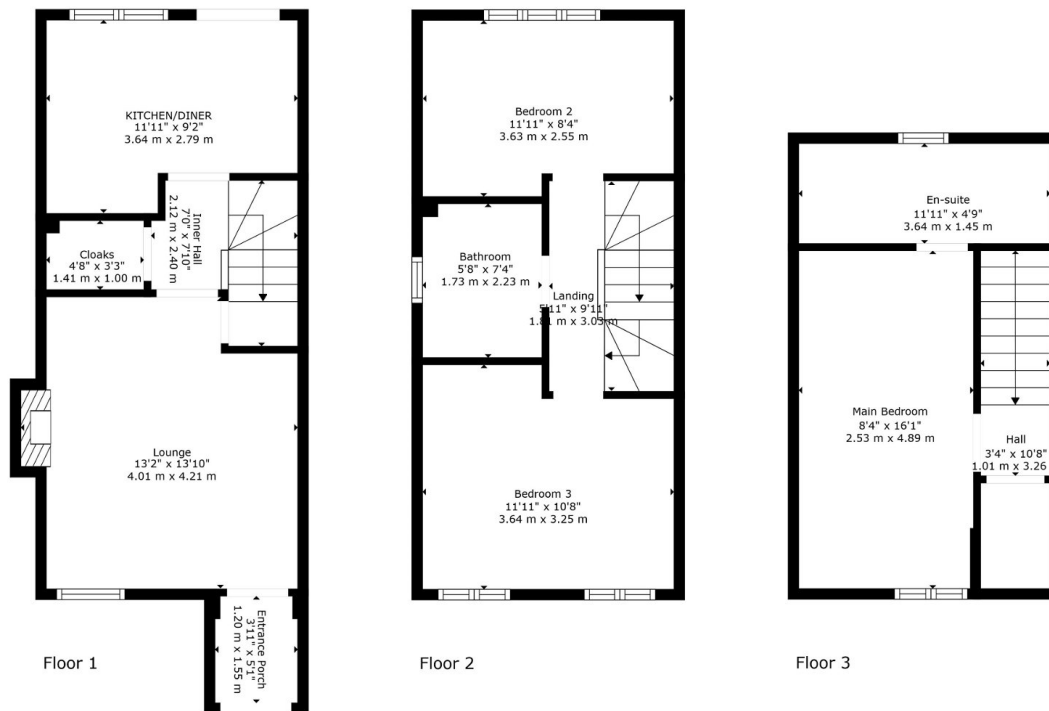
Marshfern Place, Wynbunbury, Nantwich, CW2

Guide Price £245,000

 3  3  2



- 3 Double Bedroomed House
- Located in Wynbunbury Village
- Excellent Local Schools
- Spacious Lounge
- South Facing Private Garden
- Built by Persimmon Homes 2019
- 3.7 Miles from Nantwich
- Master Bed with En-Suite
- Dining Kitchen integrated appliances
- Garage



Vetta Properties are delighted to bring to the market this superb 3 double bedroomed Town House built by Persimmon Homes in 2019.

They say Location Location is key to buying a home, well this property can certainly be described as such.



Located in the amazing Village of Wynbunbury, with Doorstep Walks, Excellent Schools, Eateries and Local Amenities, why wouldn't one want to live here! Just 3.7 miles from The Old Historic Town of Nantwich you will find, canal walks and an array of unique shops. This home has 3 Double Bedrooms, spacious Family Lounge, Breakfast Dining Kitchen, Cloaks, Family Bathroom, Master Bedroom with En-Suite. Another added feature is the private south facing larger than average plot plus separate Garage, all in all viewing is essential call Vetta Properties to arrange your viewing - 7 days a week

Tel: 07980 572 963

Email: toni.mortimer@vettaproperties.com

Web: www.vettaproperties.com

SOLD

Vetta
Properties 