




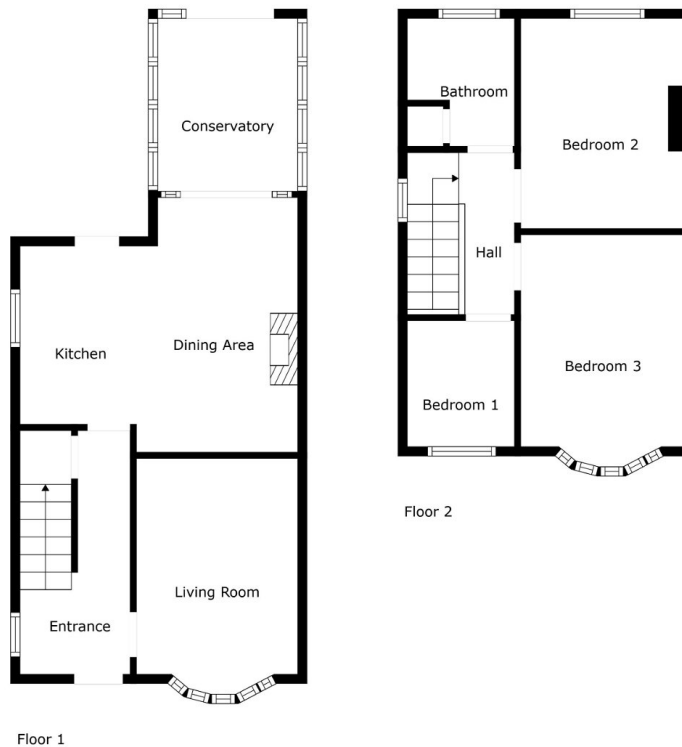
Valley Road, Wistaston, CW2

Offers Over £200,000

 3  1  2



- 3 Bedroom Semi-Detached House
- Lounge
- Conservatory
- Detached Garage
- South Facing Garden
- Enquire about extending the lounge
- Large Dining Kitchen
- Driveway prkg 3 car +
- Gas Central Heating & Double Glazing
- No Chain



Measurements Are Calculated By Cubicasa Technology. Deemed Highly Reliable But Not Guaranteed.

Vetta Properties are delighted to bring to the market this 3-bedroom family home which offers a fantastic opportunity to add your own personal style and extend the property to create your dream home. Situated on a generous plot, the house features a south-facing garden, a detached garage, and a driveway with ample space for at least 3 cars. Situated in the sought after area of Wistaston, with great schools and local amenities. Call to book your viewing - No Chain