



## Flat A, 14 Trocadero High Street, Swanage, BH19 2NT

£1,600    Deposit £1,846

- Situated In The Heart Of Swanage
- Private Balcony
- Three Double Bedrooms
- Council Tax Band C
- Stunning Sea Views
- Open Plan Living/Dining Room

# 14 Trocadero High Street, Swanage BH19 2NT

Stunning Three Bedroom Flat With Sea Views



Council Tax Band: C





## Property Details

Presenting this stylish three-bedroom apartment, offering a prime central Swanage location, beautiful sea views, and its own private balcony.

The highlight is a generous open-plan living and dining area that opens directly onto the balcony—perfect for entertaining and seamlessly extending your living space outdoors. The contemporary kitchen is well-equipped with modern fittings.

The property boasts three genuine double bedrooms and is completed by a sleek family bathroom.

Merging a fantastic location with outdoor space and sea views, this flat is a rare rental find. Viewing is highly recommended.

Rent: £1600.00  
Deposit: £1846.00  
EPC: TBC  
Council Tax: C

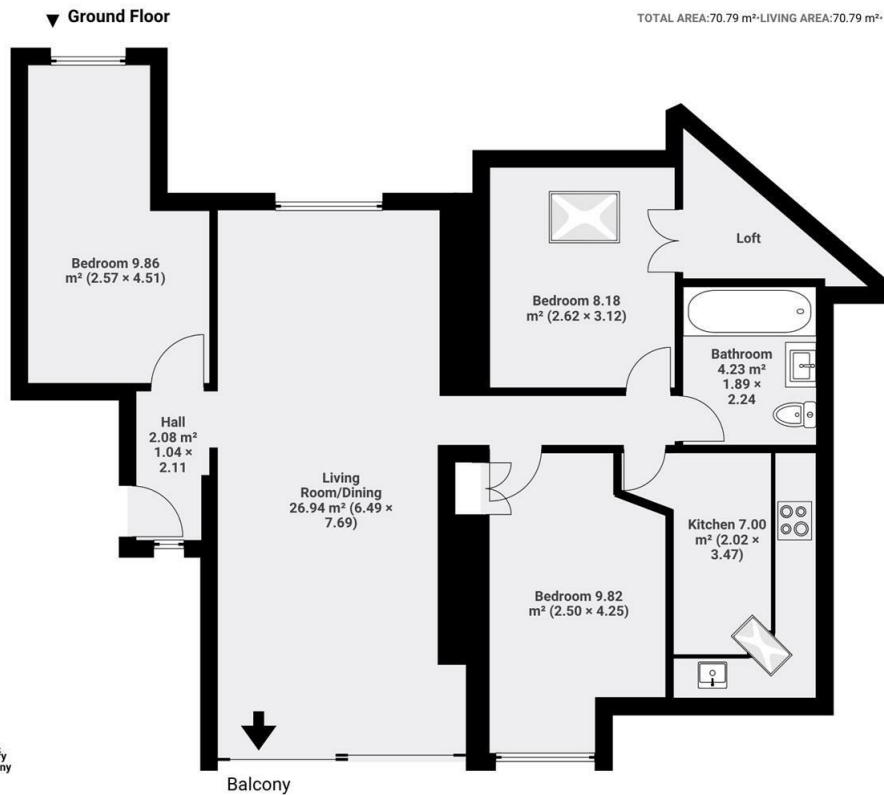
"The photos used in this

marketing material are to be used for indicative purposes only as they may not be a recent representation of the property décor, appearance, contents or condition. A physical viewing of the property must be carried out prior to application."

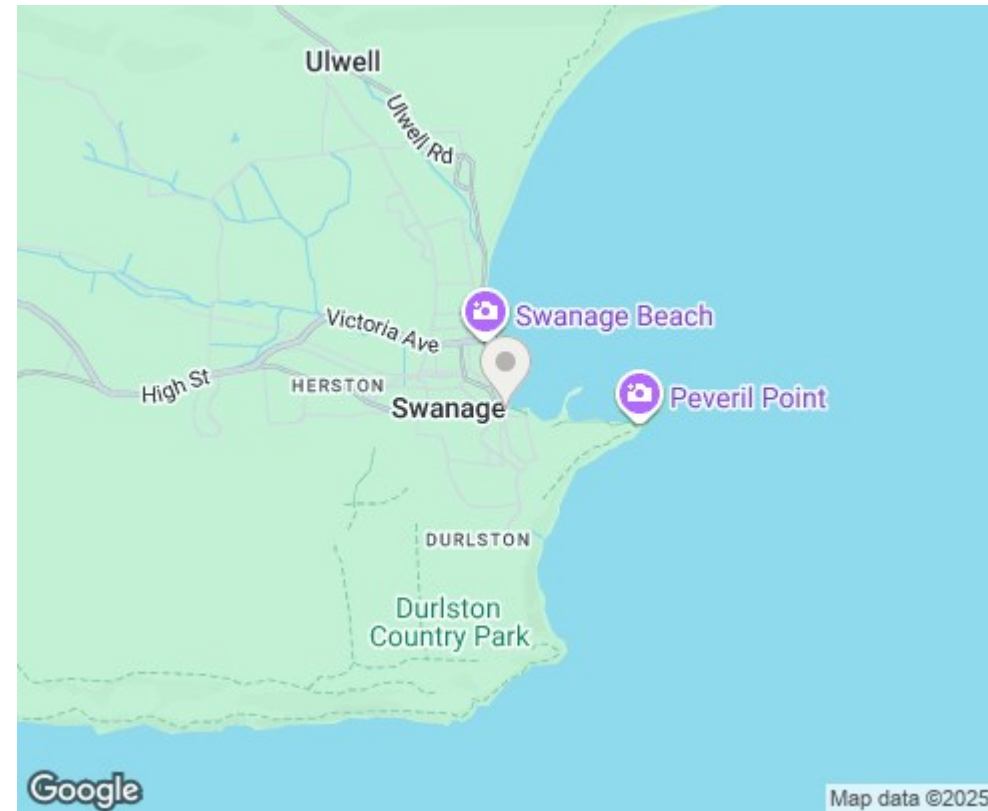




14 Trocadero  
Swanage  
BH19



The floorplan is for illustrative purposes only. All dimensions and measurements are approximate. Actual sizes may vary due to construction tolerances, finishing variations, and other factors. Prospective buyers or tenants are advised to verify all measurements independently before making any decisions.



#### Energy Efficiency Rating

|   | Current                 | Potential |
|---|-------------------------|-----------|
| Very energy efficient - lower running costs |                         |           |
| (92 plus) <b>A</b>                          |                         |           |
| (81-91) <b>B</b>                            |                         |           |
| (69-80) <b>C</b>                            |                         |           |
| (55-68) <b>D</b>                            |                         |           |
| (39-54) <b>E</b>                            |                         |           |
| (21-38) <b>F</b>                            |                         |           |
| (1-20) <b>G</b>                             |                         |           |
| Not energy efficient - higher running costs |                         |           |
| <b>England &amp; Wales</b>                  | EU Directive 2002/91/EC |           |

## Viewings

Viewings by arrangement only.  
Call 01202 88 90 88 to make an appointment.