



Clayton Court Church Lane, Clayton West

Offers in Region of £195,000



Clayton Court Church Lane, Huddersfield

A sensational two double-bedroom luxury apartment located in an exclusive and historic converted church. Combining modern décor with stunning original features this is your chance to own a piece of history in this incredible exclusive development.

Council Tax band: B

Tenure: Leasehold

- Bespoke conversion of a historic church
- Modern, fully fitted kitchens equipped with appliances
- Allocated, off-road parking
- Situated on ground floor level
- Private entrance with courtyard garden





Kitchen

This magnificent and spacious newly fitted kitchen is extremely light and airy courtesy of the large Velux window and door which leads out to the garden. Decorated in modern tones with luxury grey wood effect flooring. The kitchen has an array of stylish wall and base units providing plenty of storage with complementary work surfaces. It benefits from an integrated fridge/freezer, dishwasher, microwave, oven and gas hob with plumbing for a washing machine. A breakfast bar creates the ideal place for more informal dining and enjoying a morning cup of coffee in this light and airy space.

Living / Dining

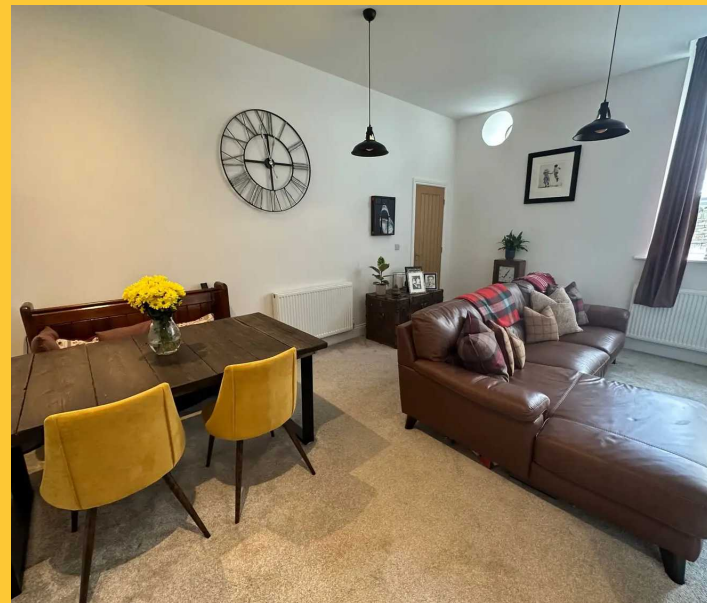
A huge open-plan living/dining room, this sociable room is warm and inviting with striking windows which have been retained from the converted church building providing an eye-catching feature whilst cascading natural light. Immaculately presented and perfect for relaxing and watching TV or entertaining as there is ample room for a family-size dining suite.

Bedroom 1

A contemporary good size double bedroom benefiting from a full bank of mirrored fitted wardrobes maximising storage. The stunning feature windows are a beautiful feature of the room and flood the room with light, there is a door that opens to the rear hallway which provides extra storage space and hanging space for outdoor garments.

Bedroom 2

Again an extremely spacious second double bedroom, benefiting from having ample room for furniture whilst also allowing an area for office space which is ideal for those working from home.





Bathroom

An extremely luxurious bathroom, fitted with high-quality fixtures and fittings. Modern grey tiling compliments striking white walls with low flush W.C, wash basin with vanity cupboard below and full-length bath with shower over and glass screen. This is certainly a bathroom in which to lay in the bubbles with some candles and soak in the relaxing space.

W.C.

Having the all essential second W.C, cleverly designed with storage cupboard underneath the sink and low level W.C.

Garden

Located immediately off the kitchen the courtyard garden enjoys a great deal of privacy, and is perfect to sit out with either a glass of wine or a cup of coffee.



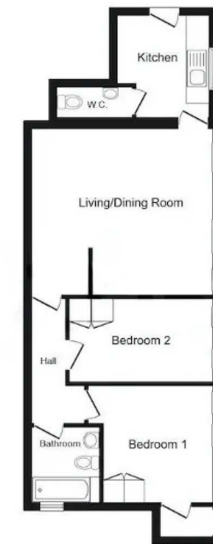


Temperatures aren't the only thing that's rising - call us NOW for your FREE valuation

01484 629 629
info@homeandmanor.uk
2 Town Road, Kirkheaton, HD5 0HW



HOME & MANOR



Floor Plan



Home and Manor

2 Town Road, Huddersfield - HD5 0HW

01484 629629 • info@homeandmanor.uk • homeandmanor.uk