

## Corn Street, Witney, OX28 6BU

Offers In Region Of £550,000

🛏 4 🚿 2 🚗 2

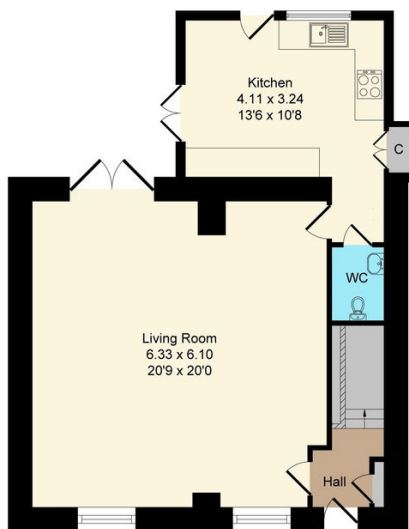


Welcome to 108 Corn Street, Witney – an expansive four-bedroom character property that effortlessly blends historic charm with modern living. Nestled in a prime location, this spacious home offers generous room sizes across three floors, providing ample space for comfortable family living

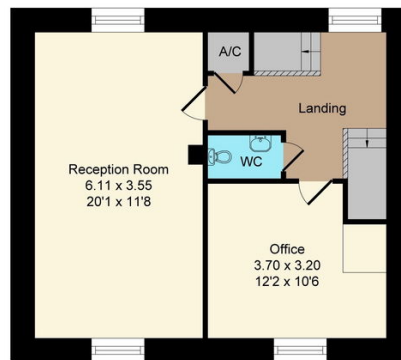
## Key Features

- Town centre location
- Kitchen
- Large first floor bedroom and study
- En suite shower room
- Generous garden
- Large living area
- Ground floor cloakroom
- Two second floor double bedrooms
- Family bathroom
- Parking permits

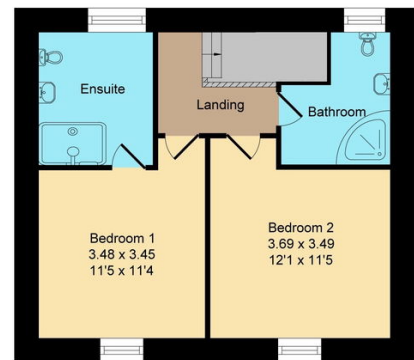
Approximate Gross Internal Area = 154.17 sq m / 1659.47 sq ft



**Ground Floor**



**First Floor**



**Second Floor**

This floorplan is for illustrative purpose only and is not drawn to scale. Measurement, floor-areas, openings and orientations area approximate. They should not be relied upon for any purpose and do not form any part of an agreement. No liability is taken for any error of mis-statement. All parties must rely on their own inspections.