



Olley Crescent, Witney

Offers In Region Of £399,950

3 2 1



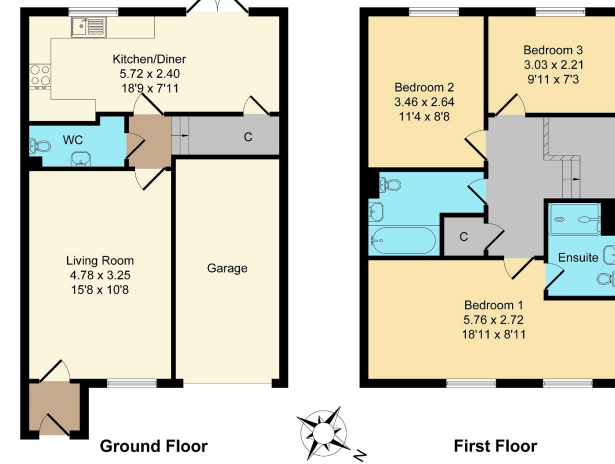
- 3 double bedrooms
- South facing garden
- No onward chain
- Immaculately presented
- Parking for 2 vehicles and a garage





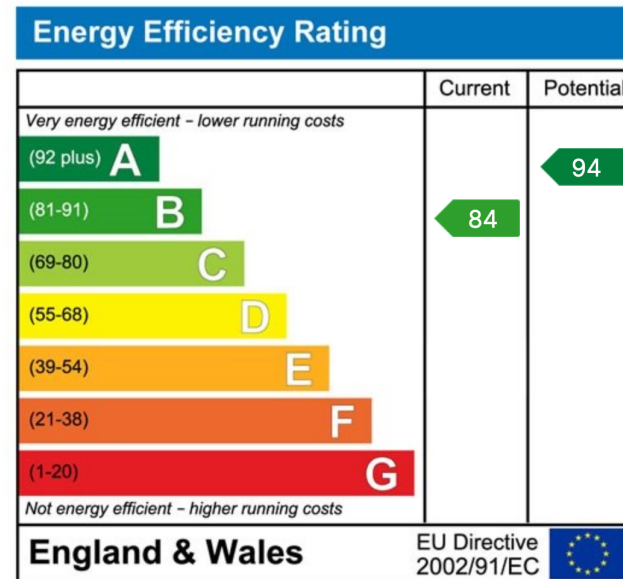
Approximate Gross Internal Area = 96.32 sq m / 1036.78 sq ft

OXFORDSHIRE
PROPERTY AGENT



This floorplan is for illustrative purpose only and is not drawn to scale. Measurement, floor-areas, openings and orientations are approximate. They should not be relied upon for any purpose and do not form any part of an agreement. No liability is taken for any error of mis-statement. All parties must rely on their own inspections.

Located on the Windrush Place estate in Witney, this well proportioned 3 bedroom semi-detached house is presented in immaculate condition throughout and benefits from double bedrooms, a generous kitchen/diner and a South facing garden.



oxfordshirepropertyagent.co.uk

Sell Your Home For Only

0.75%

Your own dedicated

Agent

1 Month
Contracts

5 New sellers
a month

