



Idbury Close, Witney, OX28 5FE

Offers In Region Of £289,950

🛏️ 2 🪑 1 🚿 1



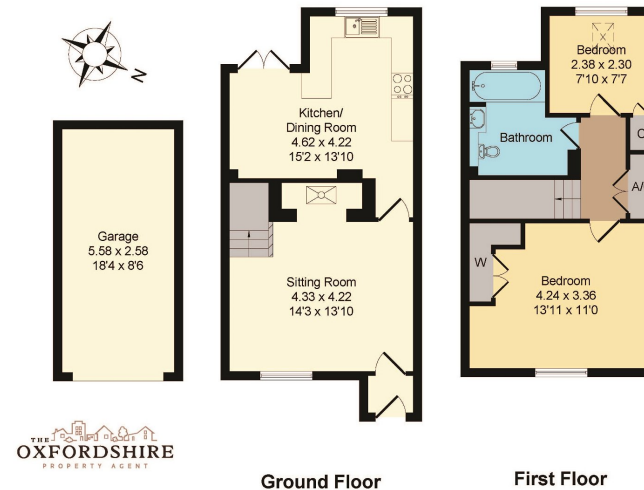
- Secluded location
- Perfect for first time buyers
- Modern boiler
- Garden
- Garage & Parking
- No onward chain



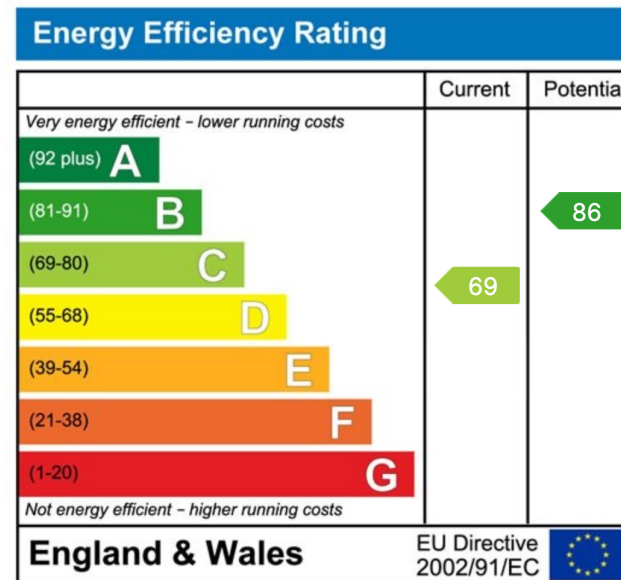


Being sold with no onward chain, this two bedroom property on the popular Deer Park estate is tucked away in a small, private cluster of similar properties, and would make for a great first time purchase or investment.

Approximate Gross Internal Area = 79.24 sq m / 853 sq ft



This floorplan is for illustrative purpose only and is not drawn to scale. Measurement, floor-areas, openings and orientations are approximate. They should not be relied upon for any purpose and do not form any part of an agreement. No liability is taken for any error of mis-statement. All parties must rely on their own inspections.



oxfordshirepropertyagent.co.uk

Sell Your Home For Only

0.75%

Your own dedicated

Agent

1 Month Contracts

5 New sellers a month

