



THE   
**OXFORDSHIRE**  
PROPERTY AGENT

Tel: 01993 670 434

Email: [info@oxfordshirepropertyagent.co.uk](mailto:info@oxfordshirepropertyagent.co.uk)

Web: [www.oxfordshirepropertyagent.co.uk](http://www.oxfordshirepropertyagent.co.uk)

# High Street, Milton-under-Wychwood, Chipping Norton, OX7 6LA

Offers In Region Of £599,950

3 3 1

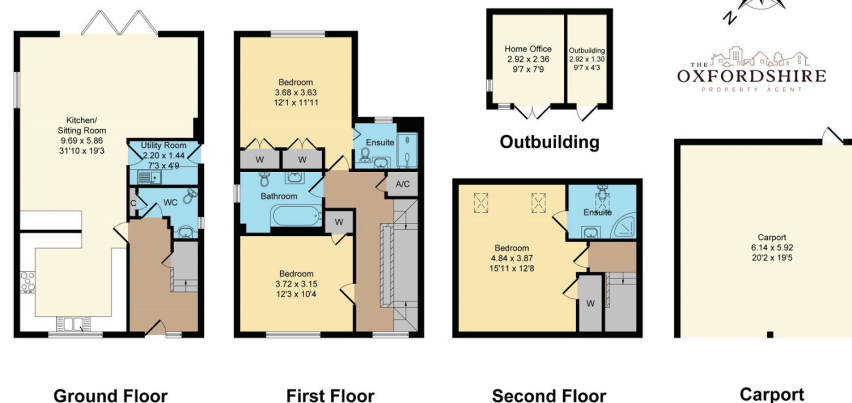


- Detached modern home
- Private parking behind electric gates
- Open plan living
- Two landscaped gardens
- Bi-fold doors
- Separate home office
- Prime village location
- Extremely high standard of finish





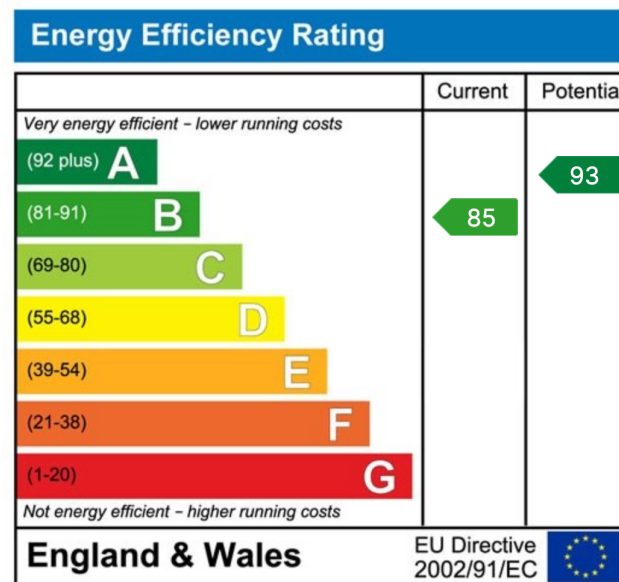
Approximate Gross Internal Area = 184.27 sq m / 1983 sq ft



This floorplan is for illustrative purpose only and is not drawn to scale. Measurement, floor-areas, openings and orientations are approximate. They should not be relied upon for any purpose and do not form any part of an agreement. No liability is taken for any error of mis-statement. All parties must rely on their own inspections.



We are delighted to bring to market this recently built 3 double bedroom detached property, which has been finished to an extremely high standard, and is situated in the popular village of Milton Under Wychwood.



[oxfordshirepropertyagent.co.uk](http://oxfordshirepropertyagent.co.uk)

Sell Your Home For Only  
**0.75%**

Your own dedicated  
**Agent**

**1** Month  
Contracts

**5** New sellers  
a month

