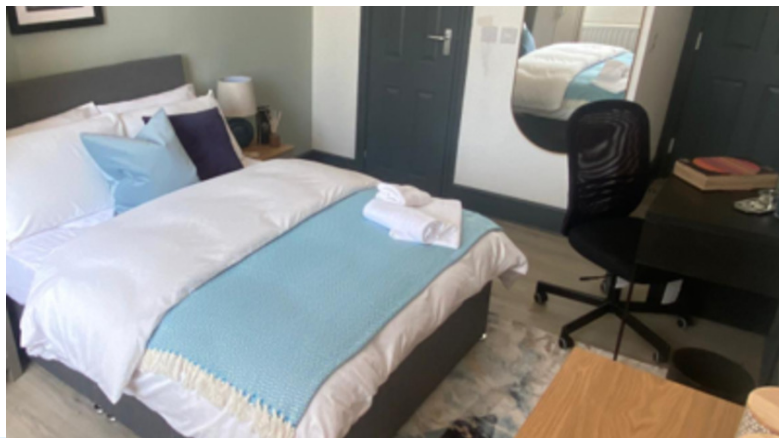




Asking Price £280,000

St. Marys Road, Garston, Liverpool,



FEATURES

- 6 Bed All En Suite HMO
- Very Well Presented
- Fully Managed By Reputable Agent
- Excellent Occupancy
- Gross Income - £33,660
- Gross Yield - 12.02%
- Buyers Fee 1.5% + VAT

The Asset Brokers are delighted to bring this fantastic 6 bed all ensuite HMO to the market in Liverpool. Currently fully managed by a local and reputable managing agent this is the perfect hands off investment. Offering a gross income of £33,360 PA & a gross yield of 12.02 %.

Offering 6 double en suite rooms over three floors the property also boasts a separate communal study area and two kitchens.

St Mary's Road is ideally located to all local amenities with Asda being just across the road from the property. The property also has great transport links into Liverpool city centre.

A perfect hands off investment, this is one not to be missed!



THE ASSET BROKERS
property investment specialists

Liverpool

Tel: 0151 679 2525

Email: enquiries@theassetbrokers.co.uk



Floor Plan & EPCs

St. Marys Road,
Garston, Liverpool,
MERSEYSIDE



Energy Efficiency Rating

	Current	Potential
Very energy efficient - lower running costs		
(92 plus) A		
(81-91) B		
(69-80) C		79
(55-68) D	61	
(39-54) E		
(21-38) F		
(1-20) G		
Not energy efficient - higher running costs		



THE ASSET BROKERS
property investment specialists

Liverpool

Tel: 0151 679 2525

Email: enquiries@theassetbrokers.co.uk