

2 Platemakers  
Court Printworks  
Drive  
Norwich



**ATTIK**  
CITY | COUNTRY | COAST

# 2 Platemarkers Court Printworks Drive

Guide Price £310,000

## The modern two-double-bedroom apartment...

Situated within the sought-after Printworks development—completed in early 2022—this superb two-bedroom apartment offers contemporary living just moments from Norwich city centre.

The development combines high-quality design with convenience, providing residents with secure gated parking, a modern entry system, and well-kept communal areas. The building is ideally placed within walking distance of Norwich Train Station, Carrow Road, and the vibrant Riverside quarter, making it perfect for professionals, commuters, and those seeking city living with a calmer setting.

Positioned on the first floor, Apartment 2 enjoys a light-filled and spacious layout. The open-plan living area features a stylish fitted kitchen complete with integrated appliances—oven, hob, dishwasher, washing machine, fridge-freezer, and microwave—all designed for easy, modern living. The space opens onto a private balcony, offering lovely views towards the river and creating a peaceful spot to unwind.

The principal bedroom includes built-in wardrobes and a sleek en suite shower room, while the second double bedroom is equally well-proportioned and served by a contemporary family bathroom. Both rooms benefit from excellent natural light and a quiet outlook, despite the proximity to the city.

With its prime location, quality finish, and secure environment, 2 Platemarkers Court represents an excellent opportunity to own or invest in one of Norwich's most desirable modern developments.

## Agents notes...

A pre-recorded walkaround tour is available for this property

Local Authority  
Norwich

Council Tax Band C

EPC Rating B



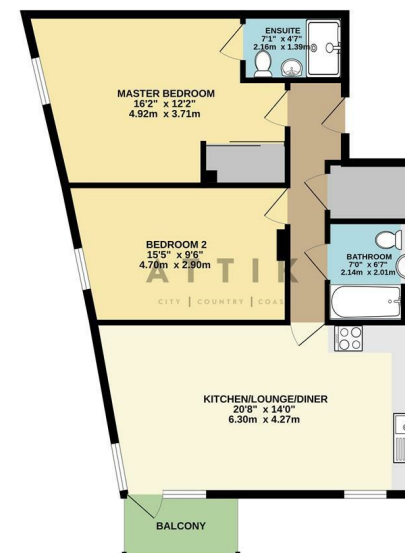
Contact

01603 964777

enquiries@attikccc.co.uk

www.attikccc.co.uk

FIRST FLOOR  
734 sq.ft. (68.2 sq.m.) approx.



TOTAL FLOOR AREA: 734 sq.ft. (68.2 sq.m.) approx.  
While every attempt has been made to ensure the accuracy of the floorplan, it is not intended to be used as a substitute for a professional survey. The plan is for illustrative purposes only and should be used as a guide for any prospective purchaser. The contents, systems and appliances shown have not been tested and no guarantee is given as to their operation or efficiency under any conditions.  
Made with floorplan 12025