

24 Newmarket  
Road  
Cringleford  
Norwich



**ATTIK**  
CITY | COUNTRY | COAST









# 24 Newmarket Road

## Guide Price £650,000

### The beautiful four bedroom house...

Tucked away on one of Cringleford's most desirable roads, 24 Newmarket Road is a truly unique four-bedroom detached home that effortlessly balances period charm with modern comfort. Set on a generous plot and offering over 2,100 square feet of beautifully designed accommodation, this property is ideal for families and those seeking versatile living space in a prime Norfolk location.

As you approach the home, you're greeted by a handsome frontage with off-road parking for multiple vehicles and two outbuildings, and a parcel of garden with planning permission previously granted for a self-contained annexe, offering exciting potential. A neat lawned garden with a patio, and bike sheds, adds further appeal to the outdoor offering. A private pathway also leads to a separate entrance into the study or occasional fourth bedroom — ideal for guests, home working, or multi-generational living.

Step inside, and the home immediately welcomes you with warmth and character. The entrance brings you into the hall, with a well-equipped utility room, housing essential appliances and storage, and a downstairs cloakroom conveniently next door. The heart of the home is a light-filled, double-aspect kitchen/breakfast room, thoughtfully fitted with a central island, modern cabinetry, integrated fridge/freezer and microwave, a range cooker, all overlooking the garden.

Flowing seamlessly, a few steps down from the kitchen is a stunning dining area, made cosy and atmospheric by a log burner, with original beams and vertical radiators adding style and character. The main family sitting room offers another generous living space with a second log burner, perfect for relaxing evenings by the fire.

The flexible study/snug or fourth bedroom lies just off this space and enjoys its own entrance, carpeted flooring, ample light, and the same high-quality finish seen throughout the home.

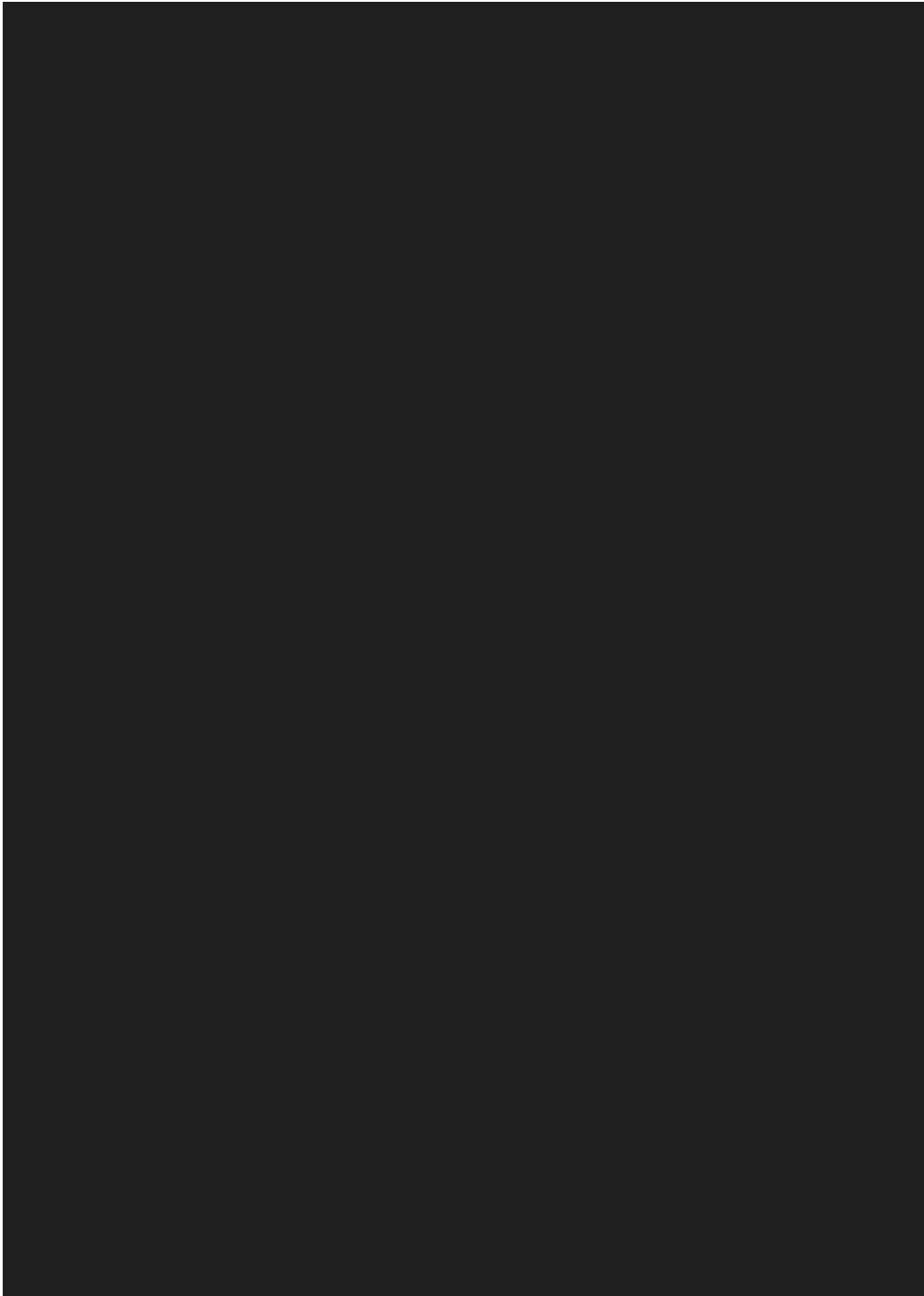
Upstairs, you'll find a characterful landing space with original beams and charming windows with shutters. The principal bedroom is a showstopper — featuring soaring vaulted ceilings, space for a super king-sized bed, and built-in storage. Its en-suite bathroom is stylishly appointed with a Velux window, free-standing bath, and heated towel rail.

Two further bedrooms offer generous proportions and beams throughout, with one having originally been two separate rooms — easily reinstated if desired. A family bathroom with a waterfall shower, Velux window, and excellent storage completes the first floor.

Located in the heart of Cringleford, this home combines a peaceful, leafy setting with easy access to the A11, Thetford, London routes, and Norwich city centre just minutes away. With character in abundance, practical space throughout, and modern updates already in place, 24 Newmarket Road is a home not to be missed.

### Agents notes...

A pre-recorded walkaround tour is available for this property

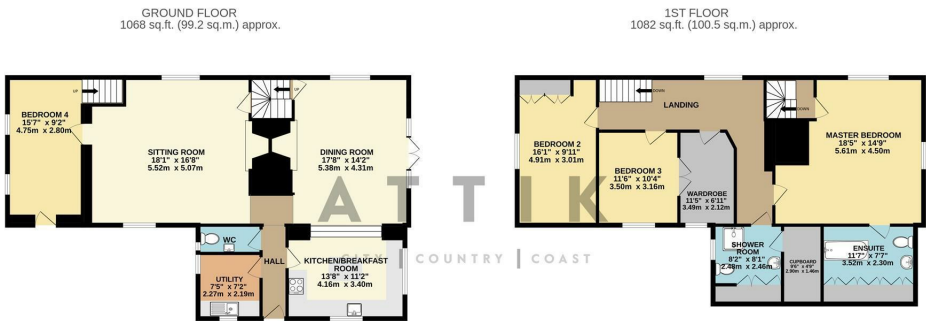




Local Authority  
South Norfolk

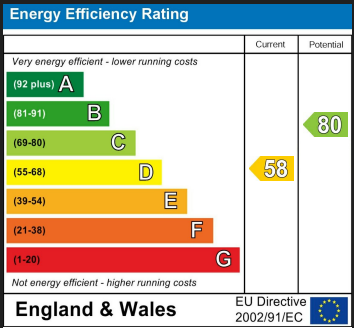
Council Tax Band  
E

Directions



TOTAL FLOOR AREA: 2150 sq.ft. (199.7 sq.m.) approx.

Whilst every attempt has been made to ensure the accuracy of the floorplan contained here, measurements of doors, windows, rooms and any other items are approximate and no responsibility is taken for any error, omission or mis-statement. This plan is for illustrative purposes only and should be used as such by any prospective purchaser. The services, systems and appliances shown have not been tested and no guarantee as to their operability or efficiency can be given.  
Made with Metropix ©2025



Agents Note: Whilst every care has been taken to prepare these particulars, they are for guidance purposes only. All measurements are approximate and are for general guidance purposes only and whilst every care has been taken to ensure their accuracy, they should not be relied upon and potential buyers/tenants are advised to recheck the measurements

**ATTIK**  
CITY | COUNTRY | COAST



Norwich Office Sales  
201 Plumstead Road  
Norwich  
NR1 4AB



Contact  
01603 964777  
[enquiries@attikccc.co.uk](mailto:enquiries@attikccc.co.uk)  
[www.attikccc.co.uk](http://www.attikccc.co.uk)