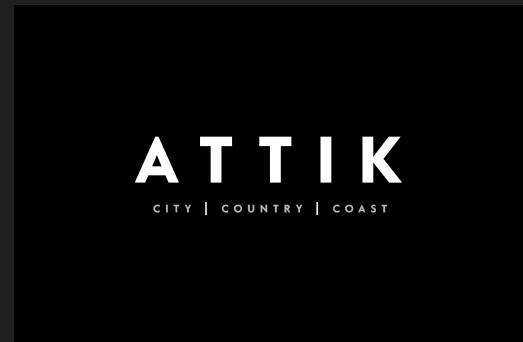


The
Beeches Watton
Road
Shropham







The Beeches Watton Road

Guide Price £675,000

The beautifully renovated four-bed home...

Welcome to The Beeches, a truly exceptional country residence nestled in the peaceful Norfolk village of Shropham. This exquisitely renovated family home offers a seamless blend of timeless character and high-spec modern living, set against a backdrop of glorious countryside views and charming English garden spaces.

Approached via a sweeping driveway with ample parking for multiple vehicles, the home is discreetly tucked away behind mature trees and traditional fencing, offering privacy, tranquillity, and a sense of arrival. A magnificent oak tree, beautifully up-lit in the evenings, anchors the rear garden—a vast, south-facing lawn framed by post-and-rail fencing and offering spectacular vistas over the surrounding fields, church spire, and open skies.

The interior of The Beeches is as impressive as its setting. Upon entering through a characterful stable door, you're immediately struck by the craftsmanship and attention to detail that permeates every room. The heart of the home is a spacious dual-aspect kitchen, dining and family room, with solid wood cabinetry, polished travertine stone flooring and underfloor heating throughout. A large island, Belfast sink, and Rangemaster cooker complete this stylish and practical entertaining space. Adjacent is a matching utility room and a downstairs cloakroom, both finished to the same high standard.

Elegant bifold doors open onto a porcelain-paved patio and enclosed courtyard area, perfect for al fresco dining or soaking up the Norfolk sunshine. A unique glass-topped well with integrated lighting adds a magical touch to evenings outdoors.

Inside, the property offers flexible accommodation across two floors. A spacious lounge and snug provide inviting reception areas, while upstairs the home boasts four generously proportioned bedrooms, including two with ensuite facilities. The master suite is a highlight, featuring countryside views, a separate dressing room, and a luxuriously appointed ensuite bathroom with freestanding bath and walk-in rainfall shower.

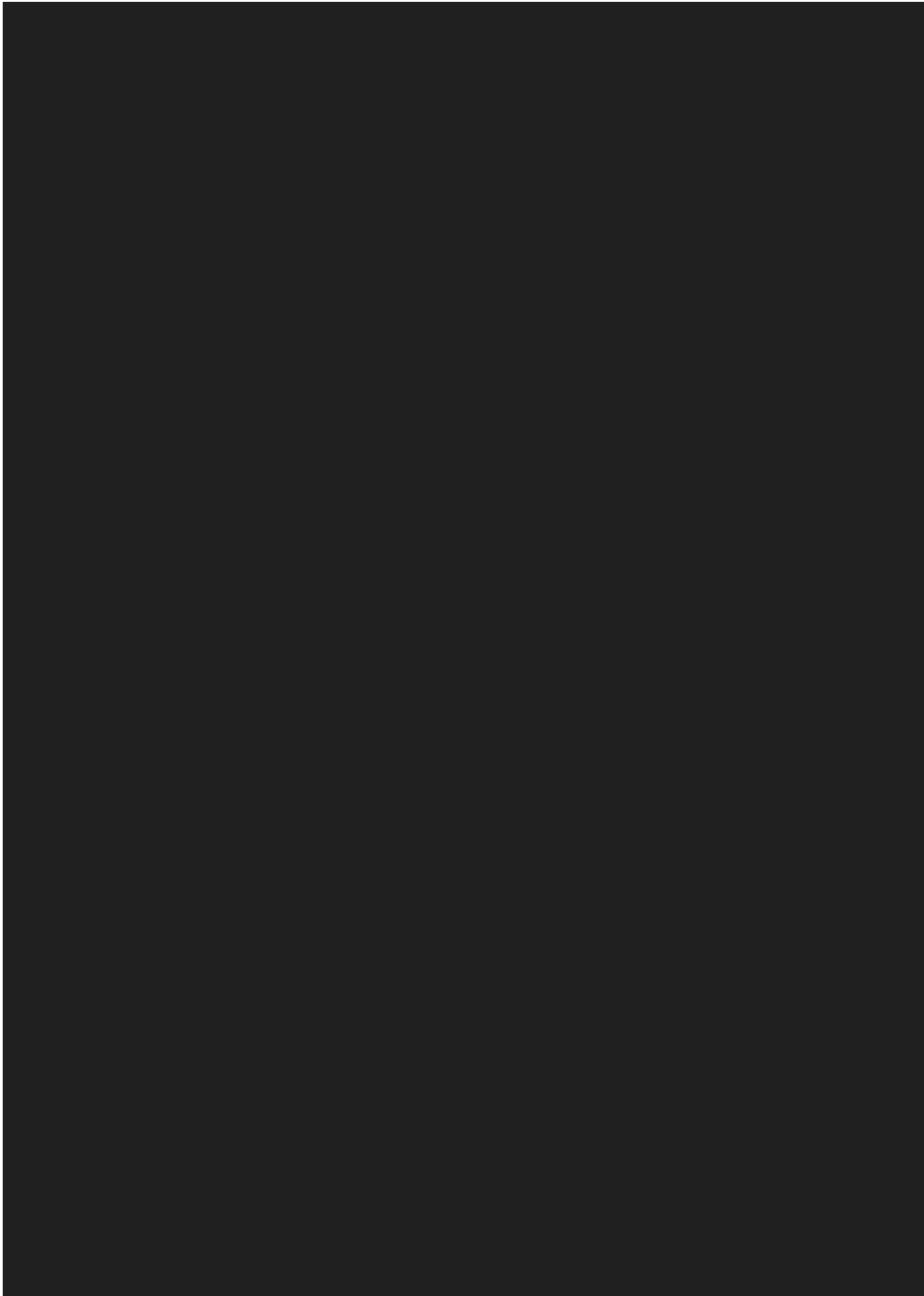
All bedrooms enjoy bespoke lighting, USB-A and USB-C charging points, cast iron radiators, and thoughtful built-in features. A modern family shower room services the remaining bedrooms, offering the same high-quality finishes found throughout the property.

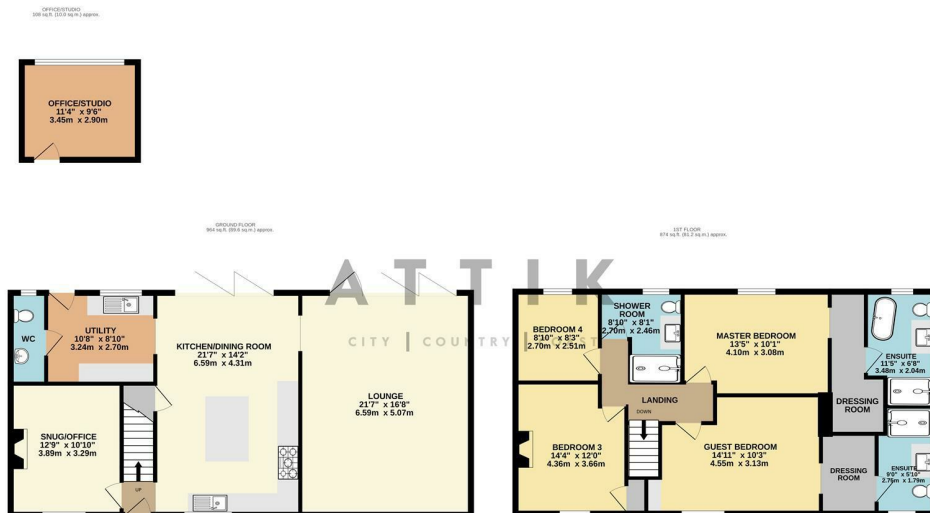
Separate from the main house, a beautifully finished home office provides an ideal remote working space, with vaulted ceilings, spotlights, and a large feature window framing views of the grounds.

Positioned just a short drive from the A11, The Beeches offers excellent transport links while retaining its peaceful, rural charm. Nearby towns such as Attleborough and Watton offer everyday conveniences, while the surrounding Norfolk countryside is a haven for walkers, cyclists and lovers of the outdoors.

Agents notes...

A pre-recorded walkaround tour is available for this property





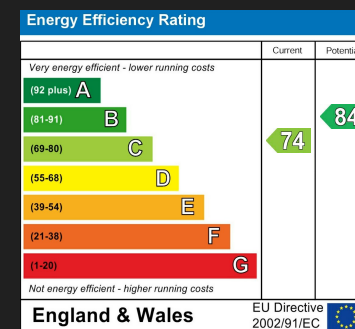
Local Authority

Breckland

Council Tax Band

D

Directions



Agents Note: Whilst every care has been taken to prepare these particulars, they are for guidance purposes only. All measurements are approximate and are for general guidance purposes only and whilst every care has been taken to ensure their accuracy, they should not be relied upon and potential buyers/tenants are advised to recheck the measurements

ATTIK
CITY | COUNTRY | COAST



Norwich Office Sales
201 Plumstead Road
Norwich
NR1 4AB



Contact
01603 964777
enquiries@attikccc.co.uk
www.attikccc.co.uk