

102 Norwich Road
Attleborough
NR17 2JY



102 Norwich Road

Price Guide £395,000

The well proportioned three bedroom detached home.

Nestled on the desirable Norwich Road in Attleborough, this three-bedroom detached property offers a functional layout and a wealth of opportunities to personalise your space. With convenient access to the town centre and the A11, this location is ideal for those seeking both tranquillity and accessibility.

Upon entering, you are greeted by a spacious and bright hallway that sets the tone for the rest of the home. To your right, the inviting living room features a stunning bay window that provides ample natural light and a lovely view of the front garden. A fireplace adds a touch of warmth, perfect for cozy evenings.

Across the hallway, the second reception room, which serves as a dining room, mirrors the generous proportions of the living room. This area is versatile enough to be transformed into an additional bedroom if desired, featuring another beautiful bay window that overlooks the front of the property.

Further along the hallway, you'll find bedroom three, the smallest of the three, yet still spacious enough to accommodate a double bed comfortably. Adjacent to this bedroom is a convenient separate toilet, followed closely by the main family bathroom. The bathroom boasts a bath with an overhead shower and sink with vanity unit—ideal for family living.

The well-appointed kitchen features wooden worktops and cream cabinets making it a delightful space to cook and entertain. Equipped with an integrated oven and hob, along with space for an undercounter fridge, this kitchen is both practical and stylish.

Ascend the staircase to the first floor to find two equally generously-sized bedrooms with windows overlooking to the side. A shower room, complete with a shower, sink and toilet, rounds off the first floor.

Stepping outside through the back porch, you'll discover a beautifully kept garden that offers a sense of serenity and privacy. The garden is spacious enough to accommodate several sheds, a greenhouse and features a delightful summer house nestled in the corner, perfect for enjoying the outdoors. Mature planting and thoughtful landscaping provide both charm and seclusion. This delightful home on Norwich Road is a true gem in Attleborough, offering a perfect blend of functionality and comfort, with plenty of storage spaces and the potential to adapt the rooms to suit your lifestyle.

Agents notes...

A pre-recorded walkaround tour is available for this property

Council Tax Band C

Local Authority
Breckland

Council Tax Band C

EPC Rating E

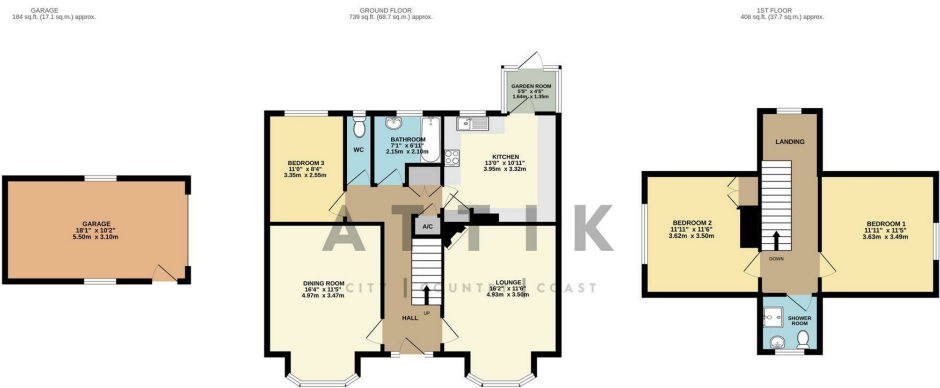


Contact

01603 964777

enquiries@attikccc.co.uk

www.attikccc.co.uk



TOTAL FLOOR AREA: 1328 sq.ft. (123.4 sq.m.) approx.

Whilst every attempt has been made to ensure the accuracy of the floorplan contained herein, measurements of doors, windows, rooms and any other items are approximate and no responsibility is taken for any error, omission or mis-statement. This plan is for illustrative purposes only and should be used as such by any prospective purchaser. The services, systems and appliances shown have not been tested and no guarantee as to their operability or efficiency can be given.

Made with Metrepro C2025