

5 Mill Lane
Acle
Norwich
NR13 3BJ



5 Mill Lane

Guide Price £230,000

The lovely three bedroom detached bungalow...

Attik are delighted to present this 3-bedroom detached bungalow situated on the desirable Mill Lane in Acle. Upon arrival, you will notice ample on-road parking, complemented by steps that lead up to the front entrance. The property boasts a generous space at the front, ideal for a quaint seating area should you desire to enjoy the outdoors.

Upon entering the bungalow, you'll find a small entrance hall leading into the main lobby. To your left is the versatile third bedroom, which could also serve as a delightful dining room, offering a view overlooking the front garden. Straight ahead, the spacious lounge awaits, featuring a cosy fireplace and views of the front and side gardens.

Continuing through the property, you will discover a separate shower room and toilet, equipped with a walk-in shower, heated towel rail and basin for your convenience. Opposite is the freshly painted second bedroom. The generously sized master bedroom can be found further down the corridor, offering a peaceful retreat. As you progress, you will arrive at the well-appointed kitchen, which features space for standard appliances and a pantry.

Completing this lovely bungalow is a spacious conservatory, bathed in natural light – a perfect spot to unwind. This inviting space enjoys an unobstructed view, ensuring it remains a suntrap throughout the day. The property also includes a useful shed at the back of the garden. This lovely bungalow presents a unique opportunity in a tranquil setting.

Agents notes...

A pre-recorded walkaround tour is available for this property
Council Tax Band C

Local Authority
Broadland

Council Tax Band C

EPC Rating E



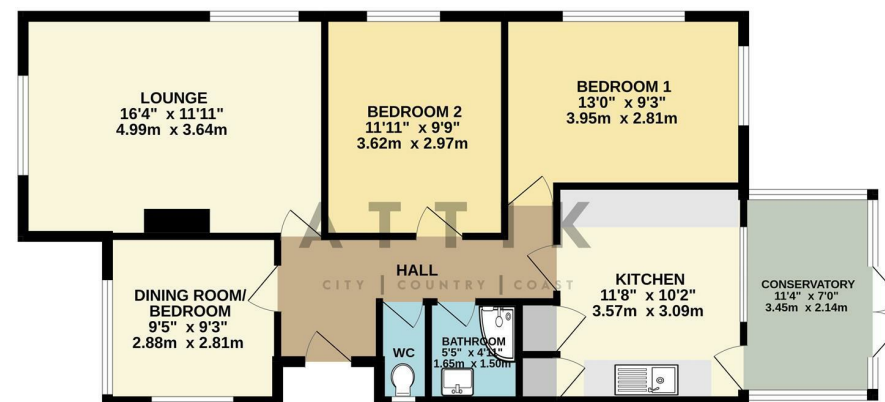
Contact

01603 964777

enquiries@attikccc.co.uk

www.attikccc.co.uk

GROUND FLOOR 836 sq.ft. (77.7 sq.m.) approx.



TOTAL FLOOR AREA: 836 sq.ft. (77.7 sq.m.) approx.
Whilst every attempt has been made to ensure the accuracy of the floorplan contained here, measurements of doors, windows, rooms and any other items are approximate and no responsibility is taken for any error, omission or mis-statement. This plan is for illustrative purposes only and should be used as such by any prospective purchaser. The services, systems and appliances shown have not been tested and no guarantee as to their operability or efficiency can be given.
Made with Metropix ©2024