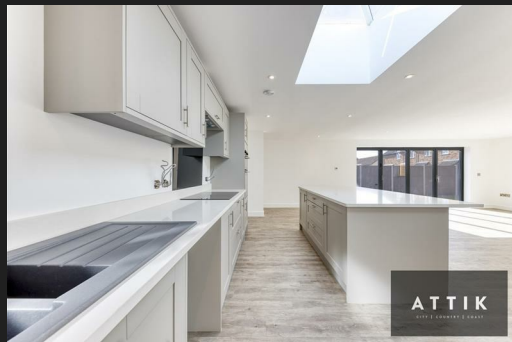


2A Edenside Drive
Attleborough
NR17 2EL



2A Edenside Drive

Guide Price £350,000

The expansive and stylish new-build bungalow...

Welcome to this stunning two-bedroom detached bungalow located in the desirable area of Edenside Drive, Attleborough. This brand-new build offers modern living in a tranquil setting, perfect for those seeking comfort and convenience.

As you approach the property, you'll be greeted by a well-maintained gravel driveway providing ample parking and easy access around the side of the home. Stepping through the inviting front door, you're welcomed into a bright and airy hallway that sets a warm tone for the rest of the bungalow. To the left of the hallway, you'll find bedroom two, a good-sized double, characterised by a front-facing window that lets in plenty of natural light. Continuing further down the hallway, bedroom one features French doors that open out to the patio and the private rear garden, offering a seamless blend of indoor and outdoor living. An additional storage cupboard in the hallway provides that much-needed space to keep things tidy. Opposite bedroom two, the bathroom impresses with its generous proportions. It features a large modern shower enclosure, stylish cream wall tiles, a bath, heated towel rail and a tasteful sink and toilet combination with additional storage. Solid oak doors and chrome plug sockets throughout add a touch of elegance to the interior. The plant room just off the entrance hall houses the hot water tank and underfloor heating controls for the entire property which is heated by the air source heat pump outside, and is perfect for shoes, coats, and boots, ensuring a clutter-free home.

The heart of this home is undoubtedly the expansive living area. Designed with an open-plan layout, this space is perfect for hosting or relaxing with family. The kitchen is fitted with high-quality integrated appliances, including a double oven and hob. It features a large island with an overhang for casual dining, coupled with an abundance of cupboard storage to keep everything organised. A large roof lantern and a generous window overlooks the garden, letting in an abundance of light, while tall pantry-style cupboards provide even more storage options. The living and dining area flows seamlessly, boasting ample space for a large dining table and comfortable sofas. The standout feature is the spectacular bi-fold doors that open fully to the patio, merging the indoor space with the outdoor setting. With outdoor plug sockets and lighting, the garden is perfect for alfresco entertaining.

The rear garden itself is beautifully presented, featuring a porcelain tile patio and lush grass, providing an idyllic space for relaxation or play.

In summary, this exceptional new build at Edenside Drive offers modern convenience with stylish finishes, making it a perfect choice for those seeking a peaceful yet vibrant lifestyle in Attleborough. Don't miss the opportunity to make this delightful bungalow your new home.

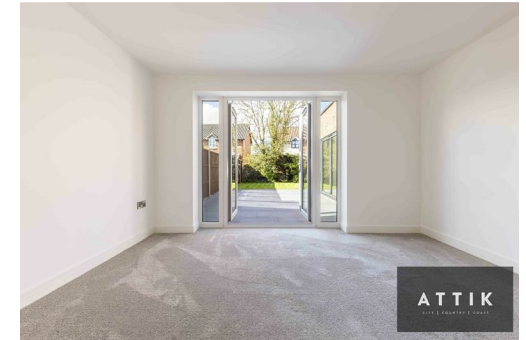
Agents notes...

A pre-recorded walkaround tour is available for this property. Council Tax Band C

Local Authority
Breckland

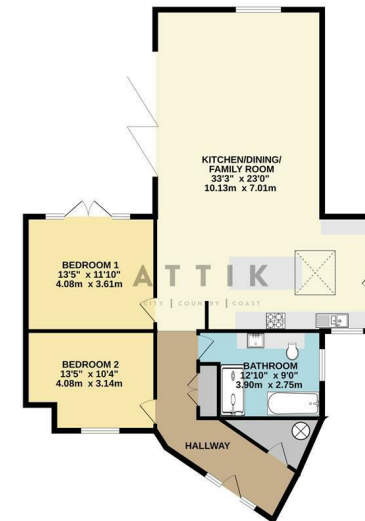
Council Tax Band C

EPC Rating B



Contact
01603 964777
enquiries@attikccc.co.uk
www.attikccc.co.uk

GROUND FLOOR
1189 sq.ft. (110.4 sq.m.) approx.



TOTAL FLOOR AREA: 1189 sq.ft. (110.4 sq.m.) approx.
While every attempt has been made to ensure the accuracy of the floorplan contained here, measurements of floors, ceilings, rooms and any other areas are approximate and are not intended to be used for any other purpose other than a guide only. The services, systems and appliances shown have not been tested and no guarantee can be given as to their operation or efficiency. Made with Neotoma 2024.