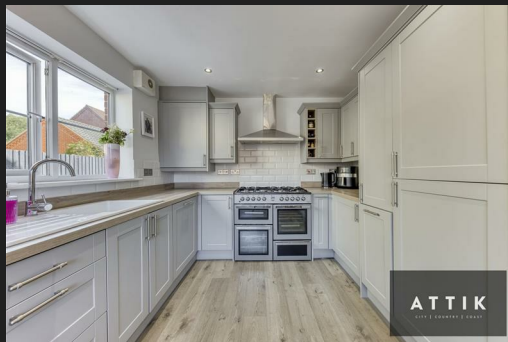


6 Blake Drive  
Wymondham  
NR18 0UX



# 6 Blake Drive

## Offers In Excess Of £305,000

### Modern Three-Bedroom Home

Attik are pleased to market this fantastic family home or ideal first home located in the sought-after location of Wymondham. Featuring a brand new kitchen, inviting wood burner and stylish flooring throughout the ground floor.

Upon entering, you are greeted by a welcoming hallway with a WC to your right. To your left is the dual aspect kitchen/dining room, equipped with a modern range of wall-mounted and base units and offers ample space for appliances where not integrated. At the rear, you'll find a spacious living room that boasts glazed double doors, seamlessly connecting the indoor space with the beautifully landscaped garden.

Venturing upstairs, the master bedroom provides the luxury of an en-suite shower room along with fitted mirrored wardrobes for extra storage. The accommodation is completed by a second double bedroom, a generous single bedroom and a modern family bathroom.

Outside, the property's brick weave driveway offers additional parking and leads to a single garage. A convenient gate provides access to the rear garden, which has been thoughtfully landscaped to include a lawn, planted borders, a patio terrace and a delightful raised deck, creating the perfect setting for outdoor dining and relaxation.

Viewing is essential to fully appreciate everything this fabulous home has to offer.

### Agents Notes...

Council Tax Band: C

Local Authority  
South Norfolk

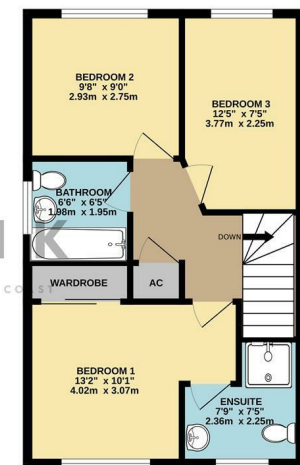
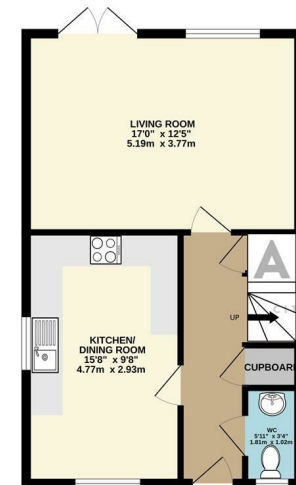
Council Tax Band C

EPC Rating B



GROUND FLOOR  
477 sq.ft. (44.3 sq.m.) approx.

1ST FLOOR  
477 sq.ft. (44.3 sq.m.) approx.



TOTAL FLOOR AREA: 954 sq.ft. (88.6 sq.m.) approx.  
Whilst every attempt has been made to ensure the accuracy of the floorplan contained herein, measurements of doors, windows, rooms and any other parts are approximate and no responsibility is taken for any error, omission or misstatement. This plan for information purposes only and should be used as such for any prospective purchaser. The services, systems and appliances shown have not been tested and no guarantee as to their operability or efficiency can be given.  
Made with Metropac 10/2011