

26 Burdock Close
Wymondham
NR18 0YE



26 Burdock Close

Guide Price £275,000

The generous 3 bedroom townhouse...

Located on Burdock Close in the sought-after town of Wymondham, this 3-bedroom mid-terraced home offers a comfortable and stylish living space.

Upon entering, you are greeted by a spacious hallway, perfect for storing coats and shoes. The hallway leads to the kitchen, dining, and lounge area. The kitchen boasts a Butler Sink, wine fridge, oak worktops, space for a range cooker, and ample storage units. It also features a gas combi boiler installed just last year. French doors open up to the garden, seamlessly blending indoor and outdoor living.

Moving up to the first floor, you'll find a lounge with a feature fireplace and a Juliet-style balcony, bathing the room in natural light. There is also a second bedroom on this floor, a double room overlooking the rear garden.

Continuing to the second floor, you'll discover the master bedroom with fitted wardrobes, an ensuite with toilet, sink, and shower. The second floor also hosts bedroom 3. A convenient storage cupboard is located on the landing, along with the main family bathroom featuring a bath, sink, and toilet.

Outside, the garden has been beautifully patioed for easy maintenance. A back gate leads to the garage and parking area, providing additional convenience for residents. This property at Burdock Close truly offers a perfect blend of comfort, style, and practicality.

Agents notes...

A pre-recorded walkaround tour is available for this property

Council Tax Band C

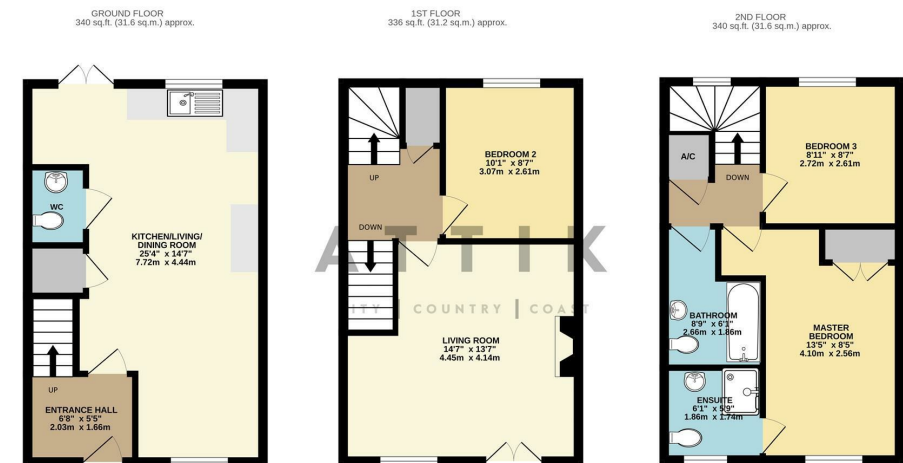
Local Authority
South Norfolk

Council Tax Band C

EPC Rating C



Contact
01603 964777
enquiries@attikccc.co.uk
www.attikccc.co.uk



TOTAL FLOOR AREA: 1017 sq.ft. (94.4 sq.m.) approx.

Whilst every attempt has been made to ensure the accuracy of the floorplan contained here, measurements of doors, windows, rooms and any other items are approximate and no responsibility is taken for any error, omission or mis-statement. This plan is for illustrative purposes only and should be used as such by any prospective purchaser. The services, systems and appliances shown have not been tested and no guarantee as to their operability or efficiency can be given.
Made with Metreplex ©2024