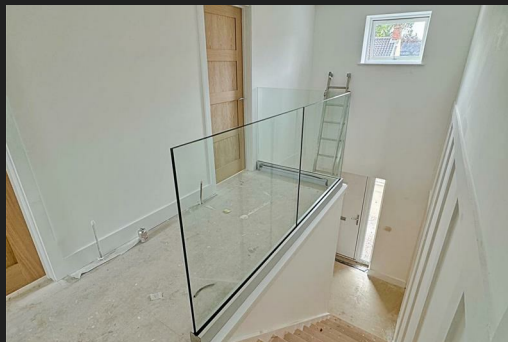
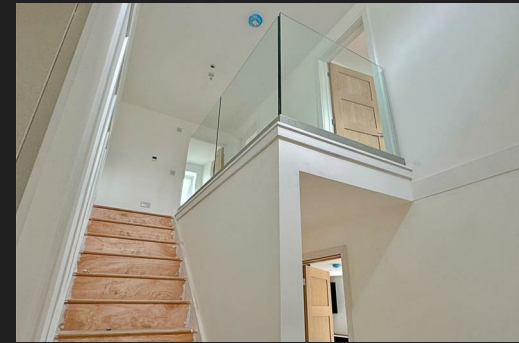


7 Constitution
Opening
Norwich
NR3 4BD



ATTIK
CITY | COUNTRY | COAST

7 Constitution Opening

Guide Price £500,000

The stylish energy efficient new build...

Step inside this beautiful brand-new home located at 7 Constitution Opening in Norwich, offering a perfect blend of convenience and comfort. Situated in a quiet cul-de-sac with minimal traffic, this property provides a peaceful and private living environment. With only eight properties in this area, the property enjoys a sense of exclusivity and space with a large school playing field adjacent.

The property features parking space for two cars and a private garden area to the side, perfect for outdoor relaxation and activities.

The interior boasts a double-height entrance hall, glass balustrade, and window above, creating a bright and welcoming atmosphere. The layout includes a versatile living space, a well-equipped kitchen with integrated appliances, and the potential to customise certain aspects of the home to your liking, subject to cost. The kitchen/dining/family room is designed for modern living, complete with French doors providing natural light and access to the garden. There's also a great-sized reception room/fourth double bedroom/home office with French doors to the front, further enhancing the versatility of this spacious home.

Upstairs, the master bedroom offers a dual-aspect view, a built-in wardrobe, and an ensuite shower room with premium finishes. Two additional double bedrooms provide ample space and storage, while the family bathroom features modern amenities including a thermostatic shower over the bath for your convenience.

Noteworthy features of this property include an air source heat pump, solar PV panels, a utility room, a downstairs WC, and a generous plant room/bike store with the option to add a battery system for enhanced energy efficiency.

Experience contemporary living in this thoughtfully designed home at 7 Constitution Opening, where every detail has been carefully considered to offer you a modern and comfortable lifestyle in the heart of Norwich.

Agents notes...

Council Tax Band and EPC Rating TBC

The build is to be completed and ready to move-into by mid July. The kitchen will have white quartz stone worktops

Local Authority
Norwich

Council Tax Band New Build

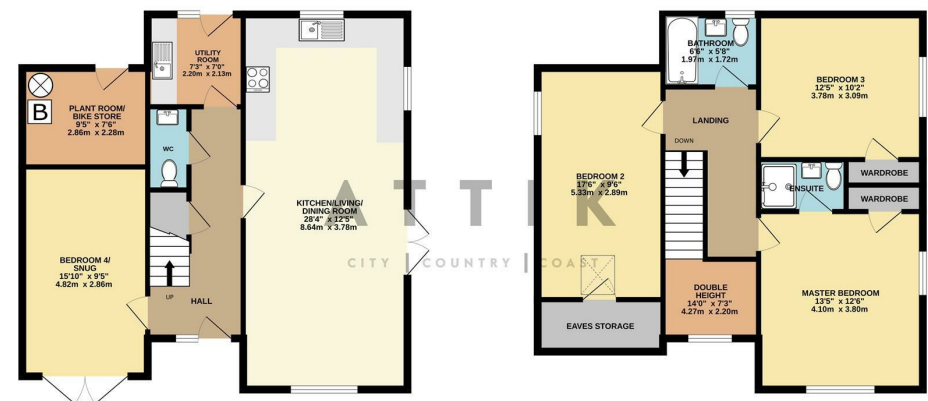
EPC Rating



Contact
01603 964777
enquiries@attikccc.co.uk
www.attikccc.co.uk

GROUND FLOOR
749 sq.ft. (69.6 sq.m.) approx.

1ST FLOOR
732 sq.ft. (68.0 sq.m.) approx.



TOTAL FLOOR AREA: 1481 sq.ft. (137.6 sq.m.) approx.

Whilst every attempt has been made to ensure the accuracy of the floorplan contained here, measurements of doors, windows, rooms and any other items are approximate and no responsibility is taken for any error, omission or mis-statement. This plan is for illustrative purposes only and should be used as such by any prospective purchaser. The services, systems and appliances shown have not been tested and no guarantee as to their operability or efficiency can be given.
Made with Metropix ©2024