

5 Newton Close  
Trowse  
Norwich  
NR14 8TX



# 5 Newton Close

## Guide Price £700,000

### The immaculate & extended executive family home...

Welcome to 5 Newton Close in Trowse. This charming property boasts four/five bedrooms and has recently undergone significant renovations and wonderful rear extension, making it a spacious and versatile home. Situated in a quiet cul-de-sac in Trowse, the house backs onto the picturesque Whittingham Country Park, offering a peaceful and scenic environment.

Starting with the exterior, the property features a shingle driveway with parking space for three cars. The lovely front lawn area, garage/workshop, and side access add to the convenience and appeal of the property. The garage/workshop is a versatile space with plumbing, heating, and potential for conversion, stpp.

Upon entering the house, you are greeted by a spacious hallway with storage for coats and shoes. The formal lounge, with a wood burner, is a bright and airy space with dual-aspect views, offering ample natural light. Moving on to the magnificent kitchen/dining/family room, which has been extended and renovated to create a perfect entertaining space for family and friends. The kitchen features integrated appliances, solid oak countertops, an island unit, a large roof lantern and bi-fold doors that flood the area with natural light.

The property also includes a utility room, study/bedroom, WC and a convenient shower in the rear lobby for dog cleaning. Upstairs, you will find four double bedrooms off the landing with glass balustrades, each offering unique views and features. The guest bedroom includes a walk-in wardrobe and a dressing room that could be converted into an ensuite. The master bedroom boasts an ensuite bathroom and fitted wardrobes, while the spacious family bathroom features underfloor heating.

The beautifully landscaped rear garden is accessible from various points in the house and includes a decking area, a lawn with raised beds, mature fruit trees, and a vegetable area with a greenhouse. A seating area, shed, picket fence, and pond add to the charm of the outdoor space, creating a serene and inviting atmosphere for relaxation.

Overall, 5 Newton Close is a well-appointed and thoughtfully designed property, offering a blend of modern amenities and natural beauty in a sought-after location in Trowse, Norwich.

### Agents notes...

A pre-recorded walkaround tour is available for this property

Council Tax Band C

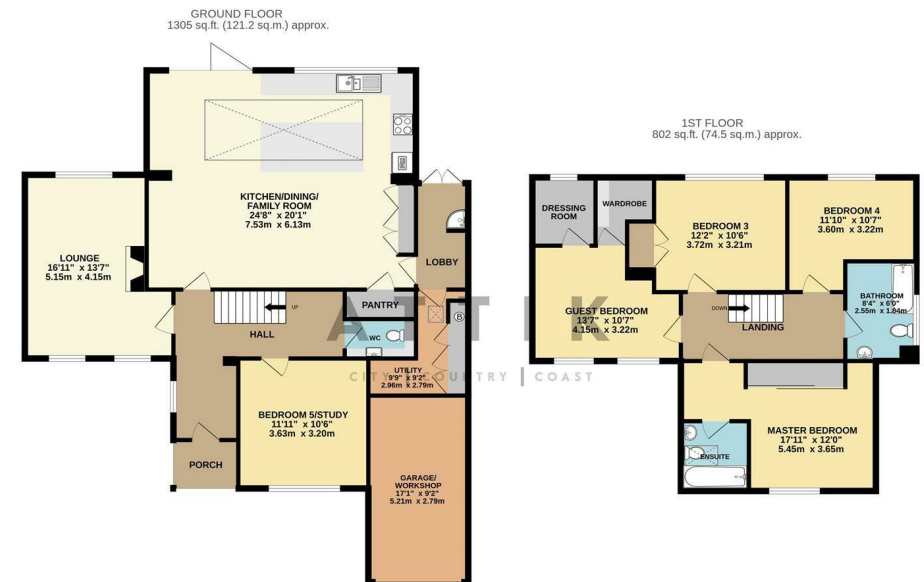
Local Authority  
South Norfolk

Council Tax Band C

EPC Rating C



Contact  
01603 964777  
enquiries@attikccc.co.uk  
www.attikccc.co.uk



TOTAL FLOOR AREA: 2107 sq.ft. (195.7 sq.m.) approx.  
Whilst every attempt has been made to ensure the accuracy of the floorplan contained here, measurements of doors, windows, rooms and any other items are approximate and no responsibility is taken for any error, omission or mis-statement. This plan is for illustrative purposes only and should be used as such by any prospective purchaser. The services, systems and appliances shown have not been tested and no guarantee as to their operability or efficiency can be given.  
Made with Metropix 02024