

5 Caroline Court
Norwich
NR4 7EJ



5 Caroline Court

Guide Price £450,000

The quirky 1970's bungalow...

Welcome to 5 Caroline Court, a well-presented and secluded 1970's bungalow nestled in a leafy cul-de-sac within the highly sought-after Golden Triangle and Eaton Park area of Norwich. This stunning home was designed by an award-winning architect, with a focus on natural light and private accommodation.

The bungalow offers versatile and spacious accommodation throughout. The large lounge impresses with its vaulted ceiling and double-glazed patio doors that open onto the enclosed courtyard garden. The kitchen/diner features a vaulted ceiling, stylish high-gloss kitchen with hardwood worktops, huge windows overlooking the close, and delightful views into the courtyard from the dining area. In addition, there is a separate utility room for added convenience.

The property comprises three double bedrooms, all with vaulted ceilings, and two of which boast built-in wardrobes. The huge bathroom also features a vaulted ceiling and a bath with a shower over. Gas central heating ensures warmth and comfort throughout the year.

There is a garage with the potential to convert, subject to obtaining the necessary planning permission. Off-road parking is available to the front of the property, providing convenience for residents and visitors alike.

Step outside and you'll discover a private walled rear garden, complete with a generous patio and lawn area. It's the perfect place to relax or entertain, while a fabulous glazed enclosed courtyard adds another unique and appealing feature to the property and really does feel like it's inside the property.

All tucked away in quiet cul de sac with easy direct access to; local shops, within 5 minutes of Eaton park facilities including tennis courts and dog walking area, the UEA and lakes, and into and out of the city via a direct bus route to city centre.

Agents notes...

A pre-recorded walkaround tour is available for this property.

Council Tax Band C

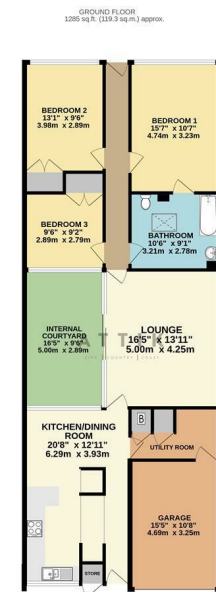
Local Authority
Norwich

Council Tax Band C

EPC Rating E



Contact
01603 964777
enquiries@attikccc.co.uk
www.attikccc.co.uk



TOTAL FLOOR AREA: 1285 sq ft (119.3 sq m) approx.
While every attempt has been made to ensure the accuracy of the figures contained here, measurements of floors, walls, rooms and any other parts are approximate and no responsibility is taken for any error or omission. All dimensions are given to the internal face of the walls unless otherwise stated. The garage, utility room and appliances shown have not been tested and no guarantee is given for appliances or electrical work shown.
Made with hgtimgpr 1/2022