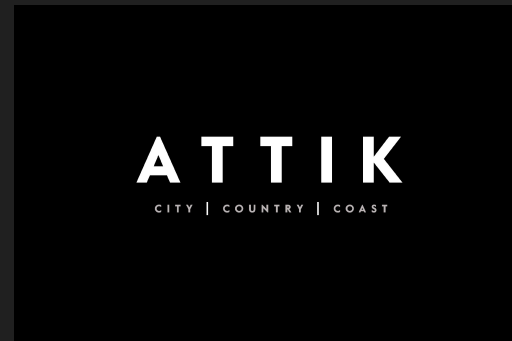


The Mead Mill  
Street  
Horsham St. Faith  
Norwich



# The Mead Mill Street

## Guide Price £475,000

### The stunning extended & remodelled bungalow...

The Mead is a beautifully presented and extensively modernised four-bedroom, two-bathroom, bungalow located in the sought-after village of Horsham St Faith, just six miles from Norwich City Centre. The property has undergone significant renovations since its purchase in 2014, including a substantial extension that has transformed the home into a stunning and spacious living space.

Upon entering the property through the lobby, you are greeted by a magnificent dual-aspect, vaulted ceiling kitchen/dining/living space. The kitchen features high-end matte black Shaker-style cabinets, solid wood worktops, and a modern range cooker with a 6-ring gas hob, creating a stylish and functional cooking area. The extension also boasts underfloor heating, Velux windows, and French doors leading to the rear garden, making it a cosy and inviting space for both living and entertaining. In addition to the kitchen/dining/living area, the property includes a utility room, a modern industrial-style shower room off the entrance lobby, a snug that can be used as an office or additional seating area adjacent to the bedrooms, and another bathroom with a lovely roll top bath. There are four spacious double bedrooms. The original bay-windowed dual-aspect reception rooms are now the two largest bedrooms, with the master bedroom, featuring a charming log burner, and a walk-in wardrobe. Bedroom three, with a built-in wardrobe, and bedroom four are both similar generous spaces.

The front of the property features ample parking and a mostly shingled area, while the rear garden is mainly laid to lawn with shrub borders, allotment beds, and an alfresco dining area. The garden also includes a garden shed that has been transformed into a fantastic home bar, providing an ideal space for entertaining. The property offers peaceful and private surroundings, with field views to the rear and limited traffic on the quiet road.

The village of Horsham St Faith offers convenient access to local amenities, including the Black Swan pub and schooling, as well as easy links to Norwich City Centre, Norwich Airport, and the beautiful North Norfolk coast. This property truly offers a modern and comfortable living experience within a picturesque village setting.

### Agents notes...

A pre-recorded walkaround tour is available for this property

Council Tax Band C

EPC to follow

Local Authority  
Broadland

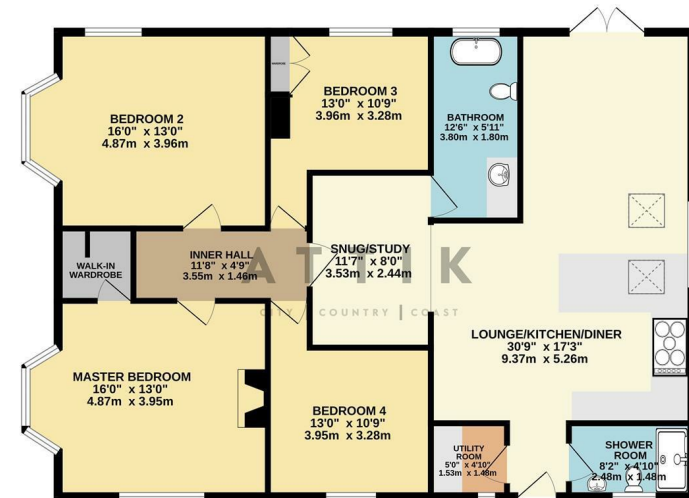
Council Tax Band C

EPC Rating C



Contact  
01603 964777  
enquiries@attikccc.co.uk  
www.attikccc.co.uk

GROUND FLOOR  
1300 sq.ft. (120.8 sq.m.) approx.



TOTAL FLOOR AREA: 1300 sq ft. (120.8 sq.m.) approx.  
While every attempt has been made to ensure the accuracy of the floorplan contained herein, measurements of doors, windows, rooms and any other items are approximate and no responsibility is taken for any error, omission or mis-statement. This plan is for illustrative purposes only and should be used in conjunction with any prospective purchase. The services, systems and appliances shown have not been tested and no guarantee is to be taken especially in efficiency or life span.  
Made with MyPlan 10/21