

5 Maltings Close
Halesworth
IP19 8EX



ATTIK
CITY | COUNTRY | COAST

5 Maltings Close

Guide Price £140,000

The two-storey maisonette...

Located on the very edge of the town centre and close to the train station, this two double-bedroom maisonette is the perfect first-time or investment property.

The accommodation comprises a generous and bright lounge/diner which has plenty of space for lounge and dining furniture, laminate flooring and two large windows overlooking the communal rear garden. The fitted kitchen has a range of wall a base units, with an integrated oven, hob and extractor over, and space for other appliances.

Upstairs there are two good-sized double bedrooms, and the bathroom, which has it's original bathroom suite.

Outside are communal gardens to the rear, along with a single en-bloc garage and off-road parking.

Agents notes...

A pre-recorded walkaround tour is available for this property

We have been advised that there is a service charge payable of approximately £500 per annum which covers exterior grounds maintenance, and that the property is leasehold and has 948 years left on the lease, we are yet to see documents to confirm this.

Local Authority
East Suffolk

Council Tax Band A

EPC Rating C

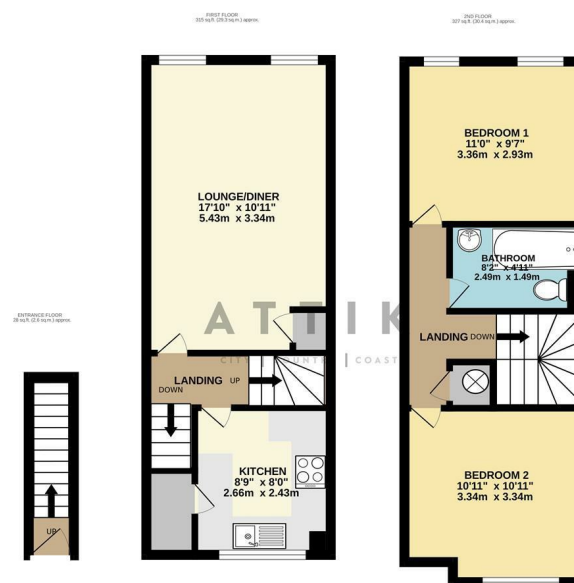


Contact

01986 899532

enquiries@attikccc.co.uk

www.attikccc.co.uk



TOTAL FLOOR AREA: 670 sq ft (62.3 sq m.) approx.
Whilst every attempt has been made to ensure the accuracy of the floorplan contained here, measurements of doors, windows, rooms and any other items are approximate and no responsibility is taken for any error, omission or misstatement. This plan is for illustrative purposes only and should be used as such by any prospective purchaser. The services, systems and appliances shown have not been tested and no guarantee as to their operability or efficiency can be given.
Made with Mirogen ©2023