

5 Upper Avenue
Halesworth
IP19 8JA



ATTIK
CITY | COUNTRY | COAST

5 Upper Avenue

Guide Price £375,000

The immaculate and versatile home...

Tucked away in a quiet, leafy cul-de-sac just moments from the heart of the thriving market town of Halesworth, this handsome bay-fronted semi-detached home offers both space and versatility in equal measure. Set behind a mature planted screen and benefiting from a generous driveway with parking for multiple vehicles, this well-presented four-bedroom home is ideal for families, multi-generational living, or those simply seeking stylish, flexible accommodation.

The property features three bedrooms upstairs, while the thoughtfully extended ground floor offers a spacious and light-filled fourth bedroom with vaulted ceilings and a contemporary adjacent shower room—perfect for guests or as a principal suite. The heart of the home lies in its open-plan kitchen/dining/family room, complete with sleek high-gloss cabinetry, solid wood worktops, and French doors flowing into a garden room that overlooks the mature, landscaped rear garden. There's a cosy bay-windowed sitting room with a working wood burner for those chilly Suffolk evenings, and the entire property has been lovingly maintained.

Upstairs, you'll find two large double bedrooms (one with a charming bay window to the front), a bright and stylish family bathroom, and a versatile fourth room—ideal as a single bedroom, study, or nursery.

The garden is a true retreat, with sunny decked and patio areas, attractive borders, a lawned space perfect for pets or children, and even a greenhouse and sheds for green-fingered owners.

Location-wise, Halesworth itself is a gem of a town, filled with independent shops, cafés, and a strong arts scene. The railway station provides direct links to Ipswich and London Liverpool Street, while the glorious Suffolk coast—home to the charming seaside towns of Southwold, Walberswick and Dunwich—is less than 20 minutes' drive away.

Whether you're drawn by the coast, the countryside, or the character of this delightful home, 5 Upper Avenue offers a rare blend of charm, convenience, and calm.

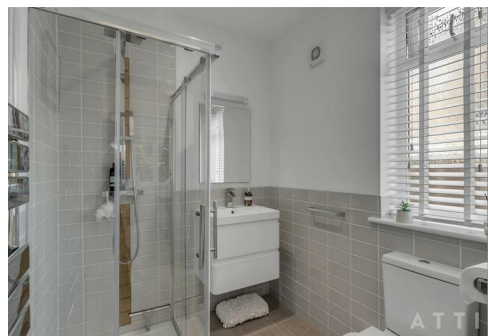
Agents notes...

A pre-recorded walkaround tour is available for this property. EPC to follow.

Local Authority
East Suffolk

Council Tax Band B

EPC Rating C

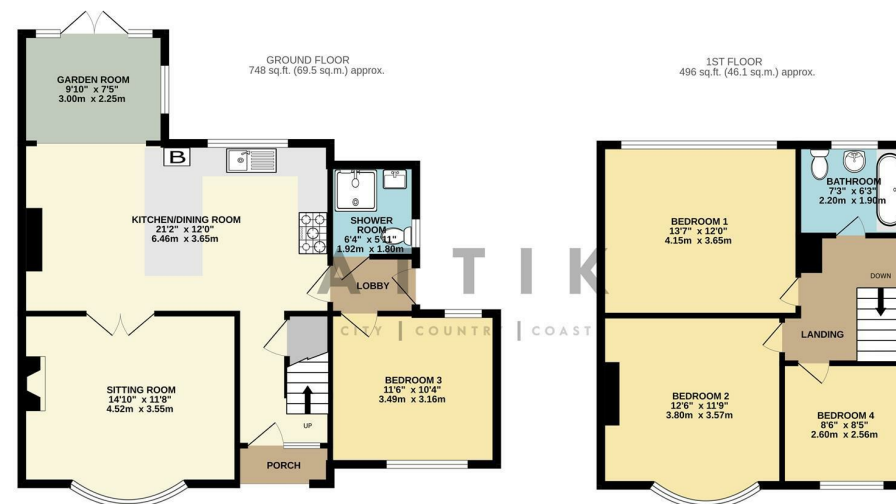


Contact

01986 899532

enquiries@attikccc.co.uk

www.attikccc.co.uk



TOTAL FLOOR AREA: 1244 sq. ft. (115.6 sq. m.) approx.
Whilst every attempt has been made to ensure the accuracy of the floorplan contained here, measurements of doors, windows, rooms and any other items are approximate and no responsibility is taken for any error, omission or mis-statement. This plan is for illustrative purposes only and should be used as such by any prospective purchaser. The services, systems and appliances shown have not been tested and no guarantee is given as to their operability or efficiency can be given.
Made with Metropix ©2025