

Homefields The
Street
Rumburgh
Halesworth



ATTIK
CITY | COUNTRY | COAST

Homefields The Street

Guide Price £450,000

The charming detached bungalow in an idyllic spot.

Tucked away on the peaceful edge of the picturesque village of Rumburgh, Homefields is a beautifully presented detached bungalow, offered to the market chain free. With expansive gardens, generous living space, and far-reaching countryside views, this delightful home combines village charm with rural serenity.

Approached via a spacious gravel and concrete driveway with ample parking for multiple vehicles, along with a generous front garden, the property occupies a particularly special plot at the edge of the village, offering both privacy and scenic surroundings. The setting is tranquil, with an attractive chapel nearby and no immediate neighbours opposite – just open skies and fields.

Internally, the bungalow offers bright and versatile accommodation, with a large porch and a welcoming hallway leading to a cosy front lounge, two sizeable double bedrooms, a well-appointed bathroom, and a superb open-plan kitchen/breakfast/dining room flowing into a triple-aspect garden room at the rear. The property has been thoughtfully extended and features a charming blend of modern comforts and character touches, including a spacious utility room, a large pantry cupboard, and a warm-roof garden room, perfect for year-round enjoyment.

The fully enclosed gardens are a true feature of the home – beautifully landscaped with mature hedging, lawns, a tranquil pond, decking areas, fruit trees, and several outbuildings including a detached garage and a potential garden office or studio at the far end of the garden, ready to make the most of those fabulous field views.

The village of Rumburgh is well-loved for its community spirit and rural appeal, with the popular Rumburgh Buck pub just a short stroll away. Nearby market towns such as Halesworth, Bungay, and Beccles offer an excellent range of shops, cafés, and amenities, while the stunning Suffolk Heritage Coast – including Southwold and Walberswick – is within easy reach for seaside day trips.

In summary, Homefields offers a rare opportunity to acquire a substantial bungalow in an enviable village setting, surrounded by countryside and yet conveniently located for local towns and the coast. A perfect choice for those seeking peace, space, and charm – with no onward chain.

Agents notes...

A pre-recorded walkaround tour is available for this property

The EPC was carried out before the new boiler was installed (2022)

Local Authority
East Suffolk`

Council Tax Band C

EPC Rating F

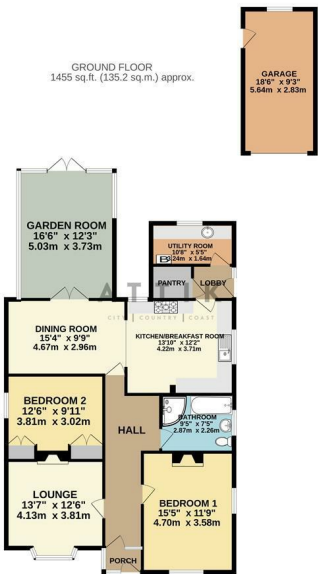


Contact

01986 899532

enquiries@attikccc.co.uk

www.attikccc.co.uk



TOTAL FLOOR AREA : 1455 sq.ft. (135.2 sq.m.) approx.
Whilst every attempt has been made to ensure the accuracy of the foregoing information, measurements of floors, windows, doors and any other items are approximate and no responsibility is taken for any error, omission or misstatement. This plan is for illustrative purposes only and should be used as a guide only in prospective purchase. The contents, systems and appliances shown have not been tested and no guarantee is given as to their operation or efficiency on the day given.
Made with Hectagon 10/2025