

18, The  
Limes London  
Road  
Halesworth



**ATTIK**  
CITY | COUNTRY | COAST

# 18, The Limes London Road

## Guide Price £120,000

### The generous over 60's apartment...

Tucked away in a peaceful cul-de-sac just a short stroll from the charming town centre of Halesworth, 18 The Limes offers a delightful first-floor apartment in a low-rise block of just four properties at this popular over 60's development. With its sunny aspect, modern interiors, and access to beautifully maintained communal gardens, this home is perfect for those seeking comfort and convenience.

Step inside through a secure communal entrance with intercom access and you're welcomed by a wide, double-width staircase with a stairlift leading to a spacious private hallway. The apartment boasts a bright and generously sized lounge/diner with sleek wood-effect vinyl flooring and programmable electric radiators. Sliding doors open onto a private balcony overlooking the tranquil communal gardens — perfect for morning coffee or evening relaxation.

The well-appointed kitchen features a good range of storage units, ample worktops, and space for essential appliances including fridge, cooker, washing machine, and tumble dryer. The property also includes two bedrooms: a large, light-filled double with built-in wardrobe space, and a versatile single that could function as a guest room or study.

A modern wet room adds a touch of practicality and style with a large window, white tiling, electric shower, and heated towel rail.

Additional highlights include two deep storage cupboards (one housing a modern hot water system), communal and visitor parking, and the convenience of local shops — including a Co-op — just moments away.

### Agents notes...

A pre-recorded walkaround tour is available for this property

Local Authority  
East Suffolk

Council Tax Band A

EPC Rating D



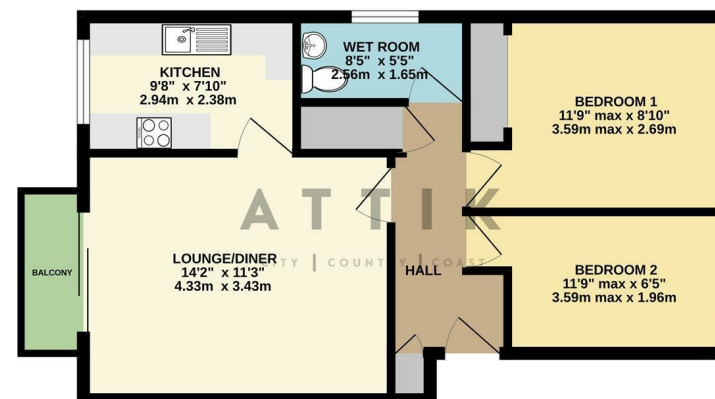
Contact

01986 899532

enquiries@attikccc.co.uk

www.attikccc.co.uk

GROUND FLOOR  
474 sq.ft. (44.1 sq.m.) approx.



TOTAL FLOOR AREA: 474 sq.ft. (44.1 sq.m.) approx.

Whilst every attempt has been made to ensure the accuracy of the floorplan contained here, measurements of doors, windows, rooms and any other items are approximate and no responsibility is taken for any error, omission or misstatement. This plan is for guidance purposes only and should be used as such by any prospective purchaser. The services, systems and appliances shown have not been tested and no guarantee as to their operability or efficiency can be given.  
Made with Metagen 12/2025