

7 Mill Close
Ellingham
Bungay
NR35 2PU



ATTIK
CITY | COUNTRY | COAST

7 Mill Close

Guide Price £280,000

The quirky three bed bungalow with great potential

Welcome to 7 Mill Close, a delightful bungalow situated in a peaceful cul-de-sac in Ellingham. This property has been lovingly occupied by just one family since it was built, offering a sense of history and continuity. While it requires some cosmetic updates, including paint, new carpets, curtains, and a modern kitchen and bathroom, it presents a fantastic opportunity to personalise and create a home that perfectly suits your style.

The layout of the bungalow is practical and spacious, with living areas positioned at the rear to maximise natural light. The inviting hallway leads to three well-proportioned bedrooms, with bedroom one being particularly spacious and featuring fitted furniture alongside a large window overlooking the front garden. Bedroom two is another generous space with built-in storage, while bedroom three, equipped with French doors, offers versatility as a guest room or home office.

The bathroom is generously sized and fully tiled, complete with a corner bath, providing a comfortable space to unwind. Though the kitchen is in need of updating, it remains functional with a double bowl sink and views of the rear garden, making meal preparation an enjoyable experience.

The separate dining room and lounge, connected by a door, provide distinct spaces for entertaining and relaxation. The dining room features a vaulted ceiling and huge windows, creating a bright and inviting atmosphere, while the lounge boasts an exposed brick fireplace and ample natural light, offering a cosy retreat.

One of the highlights of this property is the lovely courtyard garden, accessible from both the dining room and bedroom three. This enclosed outdoor space is perfect for enjoying a morning coffee or unwinding after a long day, or you could unwind in the private rear garden surrounded by mature shrubs and greenery.

Located just a short distance from the village shop and the Olive Tree Restaurant, you'll enjoy the convenience of local amenities. Ellingham also sits within easy reach of Bungay and Beccles, providing the perfect blend of tranquil living and accessibility to town life.

7 Mill Close is ready for its next chapter, providing an excellent canvas for those looking to create their dream home in a serene and welcoming community. Don't miss this opportunity to make it your own!

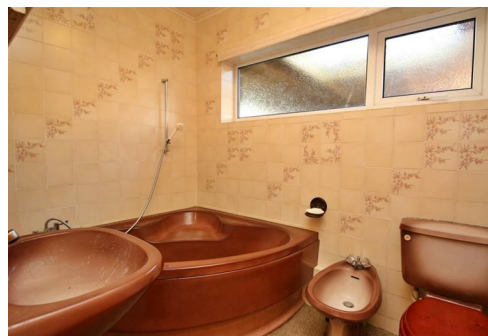
Agents notes...

A pre-recorded walkaround tour is available for this property

Local Authority
South Norfolk

Council Tax Band C

EPC Rating E



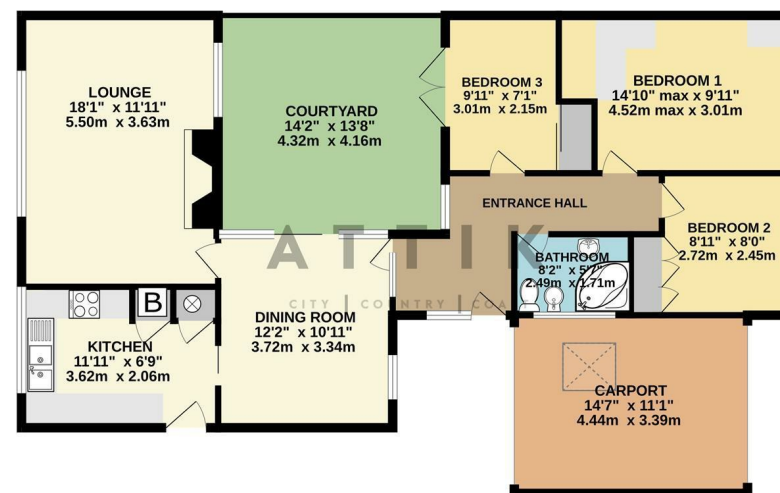
Contact

01986 899532

enquiries@attikccc.co.uk

www.attikccc.co.uk

GROUND FLOOR
1024 sq.ft. (95.1 sq.m.) approx.



TOTAL FLOOR AREA: 1024 sq.ft. (95.1 sq.m.) approx.
Whilst every attempt has been made to ensure the accuracy of the floorplan contained here, measurements of doors, windows, rooms and any other items are approximate and no responsibility is taken for any error, omission or mis-statement. This plan is for illustrative purposes only and should be used as such by any prospective purchaser. The services, systems and appliances shown have not been tested and no guarantee as to their operability or efficiency can be given.
Made with Hectagon ©2025