

33 Southend Road
Bungay
NR35 1DN



ATTIK
CITY | COUNTRY | COAST

33 Southend Road

Guide Price £325,000

The spacious three storey period home...

Welcome to 33 Southend Road, a delightful property nestled in the picturesque town of Bungay. This residence offers both comfort and style, situated within a captivating neighbourhood characterised by lovely Victorian terraces. The location provides convenient access to nearby amenities, with the heart of Bungay, known for its historic buildings, quaint shops, and vibrant community atmosphere, a short walk away, while local roads lead out towards Flixton and beyond, perfect for exploring the beautiful surrounding countryside.

At the front, the property boasts a generous driveway accommodating multiple vehicles, leading to a welcoming entrance. Upon stepping inside, you're greeted by a spacious hallway with ample room for storage. The first reception room is a formal lounge featuring exposed floorboards and impressive high ceilings, complete with a functional gas fireplace and a large window that bathes the space in natural light.

Adjacent to the lounge is a versatile room currently used as a snug or playroom, which could easily serve as a dining area or a potential bedroom. It features patio doors that open directly onto the rear garden, seamlessly connecting indoor and outdoor living. The well-appointed kitchen offers extensive storage, a modern integrated double oven, a five-burner gas hob, and space for all essential appliances, ideal for culinary enthusiasts.

Ascending to the first floor, you'll find a large and airy landing leading to several well-proportioned bedrooms, including a master bedroom that spans the width of the property, fitted with extensive wardrobe space. The modern bathroom includes a good-sized bath with a thermostatic shower and stylish fixtures.

For additional living space, a staircase leads up to a generously sized loft room, filled with natural light and offering versatile use as a guest room or a dedicated home office.

Stepping outside, the expansive garden is a true highlight, featuring a variety of mature shrubs and well-established flowering borders. It provides ample space for outdoor activities and a delightful summer house, currently utilised as a small lounge area equipped with power —perfect for relaxation or as a home office.

The property also features practical outdoor amenities such as a substantial metal storage shed and a greenhouse. The expansive garden ensures privacy, bordered by bungalows, creating a peaceful retreat that invites you to enjoy the beauty of the outdoors.

In summary, 33 Southend Road offers a wonderful blend of space, style, and functionality, set within a vibrant community with a mix of modern conveniences and historic allure. A perfect place to call home!

Agents notes...

A pre-recorded walkaround tour is available for this property. Council Tax Band B

Local Authority
East Suffolk

Council Tax Band B

EPC Rating D

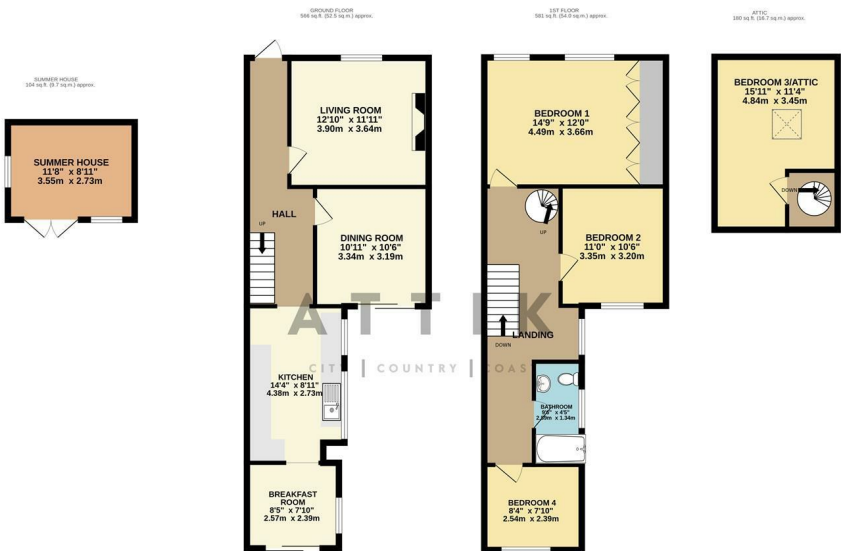


Contact

01986 899532

enquiries@attikccc.co.uk

www.attikccc.co.uk



TOTAL FLOOR AREA: 1431 sq.ft. (132.9 sq.m.) approx.

Whilst every attempt has been made to ensure the accuracy of the floorplan contained here, measurements of doors, windows, rooms and any other items are approximate and no responsibility is taken for any error, omission or mis-statement. This plan is for illustrative purposes only and should be used as such for any prospective purchase. The services, systems and appliances shown have not been tested and no guarantee as to their operability or efficiency can be given.

Made with Metropix 02/2025