

17 Blyth Mews
Halesworth
IP19 8FB



17 Blyth Mews

Guide Price £375,000

The three-storey home overlooking the park...

Discover the beauty and convenience of 17 Blyth Mews, a lovely three-storey residence located in a tranquil setting opposite the picturesque 'Millenium Green' in Halesworth. This delightful home is perfect for families and those seeking a peaceful lifestyle, with easy access to local amenities and the charming town centre just a short stroll away via the park's pathways.

As you approach the property, the well-tended front garden features attractive box hedging, ensuring a low-maintenance and appealing entryway. Upon entering, you are welcomed by a spacious hallway adorned with storage solutions to neatly tuck away shoes and coats. A generously sized cloakroom on the ground floor adds practicality, with the option to install a shower if desired.

To the left of the hallway lies the versatile family room, which seamlessly combines kitchen, dining, and living areas. This inviting space boasts ample natural light and lovely views of the park, with potential for a variety of layouts. The kitchen features a central island with a breakfast bar, making it an ideal spot for informal dining. Equipped with modern appliances including an integrated fridge/freezer, oven, plate warmer, and plenty of storage, this kitchen is both functional and stylish. The adjoining utility room serves as an excellent additional space for laundry, with easy access to the back garden.

Moving upstairs, the property showcases a well-appointed family bathroom fitted with a bathtub and shower above, along with a sink and WC. The second reception room on this floor boasts two large windows overlooking the park, flooding the room with natural light. Across the landing you will find bedroom 3, a good size double. Moving up to the second floor, the spacious master bedroom benefits from built-in wardrobes and en suite shower room. Bedroom two is also located on this floor providing comfortable accommodation along with bedroom 4 which offers flexibility as either an office or snug.

Each room in this home is designed to maximise light and space, creating an inviting atmosphere throughout. With generous storage solutions at every turn, this property stands out as a practical choice for modern living.

The rear garden is paved and provides a perfect setting for alfresco dining or relaxation, while the single garage located just outside offers secure parking or extra storage solutions, along with a parking space in front.

In summary, 17 Blyth Mews is a wonderfully spacious and well-designed family home, set in an idyllic location with views over the park. This residence perfectly blends comfort, style, and convenience, making it an excellent opportunity for those seeking a peaceful retreat within easy reach of Halesworth's amenities.

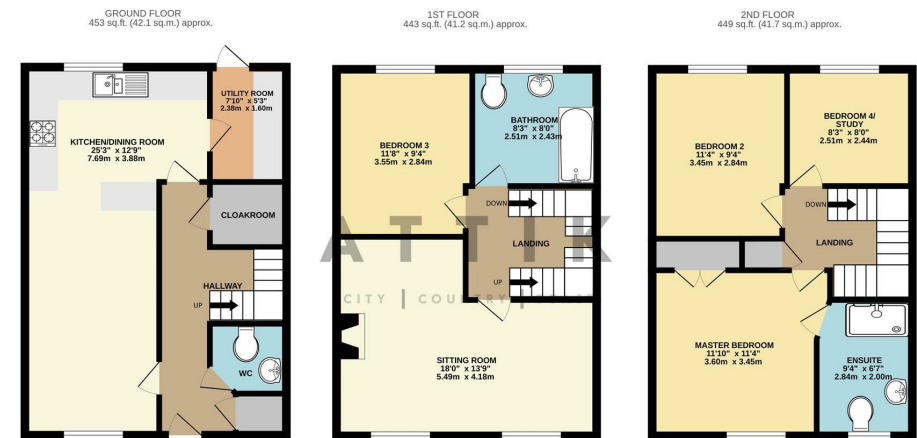
Agents notes...

A pre-recorded walkaround tour is available for this property. Council Tax Band D

Local Authority
East Suffolk

Council Tax Band D

EPC Rating C



TOTAL FLOOR AREA : 1345 sq.ft. (124.9 sq.m.) approx.

Whilst every attempt has been made to ensure the accuracy of the floorplan contained here, measurements of doors, windows, rooms and any other items are approximate and no responsibility is taken for any error, omission or mis-statement. This plan is for illustrative purposes only and should be used as such by any prospective purchaser. The services, systems and appliances shown have not been tested and no guarantee as to their operability or efficiency can be given.
Made with Metropix ©2024